



THE **Enterprise**
UTAH'S BUSINESS JOURNAL

Vol. 42 No. 21

BOOK of LISTS

2012

& BUSINESS BIOGRAPHIES



sponsored by:

 **TAB bank**SM
Member FDIC



We often talk about growing
business tomorrow. Why not *today?*



With us, you can make it happen today.

Because Zions Bank is dedicated to helping businesses in our community succeed, we have created a wealth of new resources, designed specifically for small businesses. In addition, we're lending* to more businesses—so that our community can grow today. Let us help your business. Drop by your local Zions Bank branch or call us at 800-789-2265 for a business banker near you.

Zions Bank is the #1 small business lender in Utah for the 19th consecutive year.


ZIONS BANK®

WE HAVEN'T FORGOTTEN WHO KEEPS US IN BUSINESS®

Follow us on



zionsbank.com®

Member FDIC  Equal Housing Lender

*Loans subject to credit approval. Restrictions apply.

Table of Contents

Construction & Manufacturing & Trucking

Architectural Firms	2
Commercial Contractors	4
Electrical Contractors	6
Engineering Firms	8,10
<i>W.W. Clyde Business Biography</i>	12,13
Home Builders Northern Utah	14
Home Builders Southern Utah	16
Home Builders Wasatch Front	18
Manufacturing Counties	20
<i>Staker Parson Business Biography</i>	22,23
Rock Asphalt Firms	24
Structural Steel	26
Technology Companies	27
<i>SME Steel Business Biography</i>	28,29
Sustainable Design Firms	30
Trucking Firms	32

Finance

Accounting Firms	34
Banks	36
Credit Union	38
SBA Lenders	40
<i>Bank of Utah Business Biography</i>	42,43

Healthcare

Commercial Insurance Agencies	44
Group Health Insurance Companies	46
Hospitals	48,49
Vision Centers	50

Meet & Eat & Stay

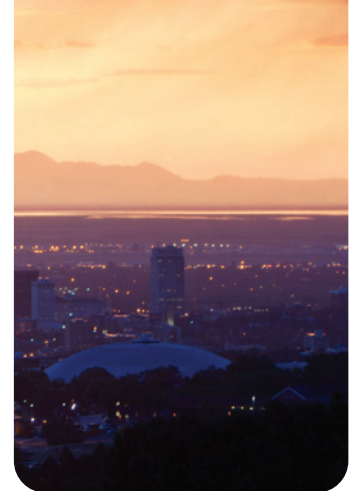
Colleges and Universities	52
Golf Northern	54,56
Golf Southern	58
Hotels	60
Meeting Facilities	62,64
Restaurants	66,68
Travel Agencies	70

Real Estate

Commercial Property Management Firms	72
Commercial Real Estate Firms	73

Running Your Business

Law Firms	74,76
Office Furniture Dealers	78
Temporary Staffing Firms	80



Top Architectural Firms in Utah

Ranked by Number of Registered Architects

Company Name Address	Phone Fax Web	# of Registered Architects	# of Interior Designers	Gross Utah Sales in 2011	Specialties	Top Local Executive
Architectural Nexus 2505 Parley's Way Salt Lake City	801-633-9750 801-924-5001 archnexus.com	57	6	\$31 million	Health care, laboratories, k-12 education, university classroom, research, student housing, mixed use development, retail, commercial, industrial, government/military, site planning and design, facility planning and operational analysis	Donald Finlayson
FFKR Architects 730 Pacific Ave Salt Lake City	801-521-6186 801-539-1916 ffkr.com	36	9	\$18.3 million	Corporate, cultural, health and science, k-12, hospitality, higher education, historic, sports and recreation, institutional and interior design	Kenneth E. Louder
MHTN Architects, Inc. 420 E. South Temple #100 Salt Lake City	801-595-6700 801-595-6717 mhtn.com	29	4	\$12.6 million	MHTN specializes in providing vision-focused planning and design services to higher education, k-12 education, civic, commercial, health care and cultural clients locally and around the world. Talented people working together to create great ideas every day.	Peggy McDonough
GSBS Architects, PC 375 W. 200 S. Ste. 100 Salt Lake City	801-521-8600 801-521-7913 gsbsarchitects.com	24	10	DND	Architecture, landscape architecture, planning interior design, sustainable design, energy engineering	Devin B. Miller
VCBO Architecture 524 S. 600 E. Salt Lake City	801-575-8800 801-531-9850 vcbo.com	20	9	\$15 million	K-12 education, higher education, health care, office, interiors, sports and recreation, justice, manufacturing, data centers, commercial, civic/government, housing	Niels Valentiner
CRSA (Cooper Roberts Simonsen Associates) 649 E. South Temple Salt Lake City	801-355-5915 801-355-9885 crsa-us.com	16	3	\$514,000	Architectural design and construction, architectural renovation, restoration, and preservation, LEED/sustainable design, local and regional planning services, master planning, facility assessment, interior design, landscape architecture, public and institutional participation process assistance, visioning and illustrations	Allen D. Roberts
Naylor Wentworth Lund Architects 336 S. 400 W. Salt Lake City	801-355-5959 801-355-5960 nwlarchitects.com	14	6	\$9.3 million	NWL architects offers professional expertise in programming, master planning, architectural design, interior design and construction administration of education, governmental, religious, civic and commercial facilities	Ross L. Wentworth
EDA Architects, Inc. 9 Exchange Place, Ste. 1100 Salt Lake City	801-531-7600 801-363-3149 edaarch.com	12	5	DND	Architecture, master planning, programming, architectural interior design and LEED services	Peter duP. Emerson, Burke Carwright, John Shuttleworth, Thomas Brennan, Greg Brooks
Design West Architects 795 N. 400 W. Salt Lake City	801-539-8221 801-539-8224 designwestarchitects.com	11	1	\$3.5 million	Education, health care, housing municipal, hospitality, interior design, landscape architecture	Blake Wright
ASWN+ (Allred Soffe Wilkinson & Nichols, Inc.) 515 S. 900 E. Ste. 200 Salt Lake City	801-269-0055 801-269-1425 aswn.com	5	1	\$3.5 million	Architecture, interior design, landscape architecture, land planning, civil engineering, surveying, construction management	James F. Allred
Archiplex Group, LLC 255 Crossroad Square Salt Lake City	801-961-7070 801-961-7373 archiplexgroup.com	2	1	DND	Commercial, institutional, government, residential-focusing on sustainable design.	Ralph Stanislaw

DND= Did Not Disclose N/A= Not Available
Please note that some firms chose not to respond, or failed to respond in time to our inquiries.
All rights reserved. Copyright 2012 by Enterprise Newspaper Group



For over thirty years, First Utah Bank has been providing superior, state of the art banking services to businesses and individuals in the Salt Lake Valley. All of our processing and decision making is done locally, by bankers who know Utah's market. Experience the difference for yourself by visiting any one of our eight convenient locations or on the web at www.firstutahbank.com.

First Utah Bank. Utah born...Utah made.

Personal Banking | Business Banking | Cash Management | SBA and Business Loans/Lines of Credit



Visit us at www.facebook.com/firstutahbank
www.firstutahbank.com

Top Commercial Contractors in Utah

Ranked by Gross Utah Sales in 2011

Company Name Address	Phone Fax Web	Gross Utah Sales	Equipment Fleet Valuation	# of Utah Employees	Notable Projects in 2011	Owner/Managing Principal
Layton Construction Company 9090 S. Sandy Parkway Sandy	801-568-9090 801-569-5450 laytonconstruction.com	\$601.3 million	DND	425	Blendtec, USTAR Sorenson Molecular Biotechnology building, University of Utah South Jordan Health Center, ATK Aerospace Structures, Cottonwood Heights Recreation Center, Squatters Airport, Kane County Sheriff's Complex	David S. Layton
Big-D Construction Corp 404 W. 400 S. S alt Lake City	801-415-6000 801-415-6900 big-d.com	\$575.72 million	DND	810	Natural History Museum of Utah, Thanksgiving Park Phase II, BYU Heritage Housing, SUU Science Center, Brigham City Temple	Rob Moore
Okland Construction Company, Inc. 1978 S. West Temple Salt Lake City	801-486-0144 801-486-7570 okland.com	\$396.69 million	\$17.5 million	540	Huntsman Cancer Hospital Expansion Phase IIB, Goldman Sachs TI 222, Harmons Downtown, City Creek Center Multiple Projects, University of Utah Eccles	J. Randy Okland
Jacobsen Construction Company, Inc. 3131 W. 221 S. Salt Lake City	801-973-0500 801-973-7496 jacobsenconstruction.com	\$363 million	\$5.19 million	405	The Regent and City Creek, City Creek Retail Development, Utah State University College of Agriculture, DABC Warehouse Expansion & Remodel, Springville City Library, Logan Regional Hospital Renovation, Century Link Building Renovation	Douglas C. Welling
R&O Construction 933 Wall Ave. Ogden	801-627-1403 801-399-1480 randoco.com randogreen.com	\$230 million	\$278,000	165	Falcon Hill at Hill Air Force Base Utah, Joaquin Student Housing in Provo, Utah, Fashion Place Mall remodel and addition of Crate and Barrel and North Face	Dale C. Campbell
Ralph L. Wadsworth Construction Company, LLC 166 E. 14000 S. Suite 200 Draper	801-553-1661 801-553-1696 wadsco.com	\$195.8 million	\$25.8 million	442	I-15 CORE, SR-154 Bangerter Highway at 7800 South, UTA Parking Structure, South Layton Interchange, FrontRunner South, I-215 On-Ramp, I-80 Summit Park Bridge, Dixie Drive Interchange	Sterling Construction Company, Inc.
Wadman Corporation 2920 S. 925 W. Salt Lake City	801-621-4185 801-621-7232 DND	\$90 million	\$2 million	100	Davis County Administrative Office/Library/Children's Justice Court West Valley Promenade & Plaza, Davis School District Special Education Building	David Wadman
Rimrock Construction, LLC 11635 S. 700 E. Ste. 100 Draper	801-676-7625 801-676-0208 rimrock.us	\$65 million	DND	35	HGTV Dream Home 2012 Give Away, Home 2 Suites- Layton & West Valley, Wasatch Commons Apartments, Gods Express-Draper (first in the west)	Mark Hampton
Sahara, Inc 801 N. 500 W. Ste. 300 Bountiful	801-298-7724 801-951-3190 sahara1.com	\$50 million	DND	30	Tooele Country Detention Center, Larry H. Miller Toyota Dealership, Providence Hall Jr. High School	Thomas C. Mabey
Cameron Construction 573 W. 3560 S. Ste. 1 Salt Lake City	801-268-3584 801-268-3678 cameronconstruction.com	\$21.3 million	DND	25	Maple Springs Senior Care & Assisted Living, LDS Hospital 1st Floor Clinic Remodel, variety of Sportsman's Warehouse locations, multiple Maverik locations, IHC Health Care projects	Kevin Cameron & David Hill
Eckman & Mitchell Construction 3032 S. 1030 W. Salt Lake City	801-908-0604 801-908-0205 emconstruction.com	\$20 million	DND	25	Pacific Landing 3, Pheasant Hollow Business Park, Hoyt Arderly	Gary Eckman, Eric Eckman, & Curtis Padjen
Stacey Enterprises, Inc 3768 Pacific Ave. Ogden	801-621-6210 801-621-7329 staceyc.com	\$20 million	\$1.5 million	18	Fresenius New Product Development Building, Farmington Cinemark 14, Ogden Housing Authority Offices, KOBE Japanese Steak House	Scott R. Dixon
Pentalon Construction 132 E. 13065 S. Draper	801-619-1900 801-619-1901 pentalon.net	\$12 million	\$103,208	24	Seinna Villas Apartments, Elmbridge Apartments, Rendon Terrace Senior Housing	Carl Tippetts
Bonneville Builders 4885 S. 900 E. Ste. 208 Salt Lake City	801-263-1406 801-261-8380 bonnevillebuilders.com	DND	\$100,000	20	Delta Professional Plaza, Durham Brands, HAI Corporate Offices, Beatty & Wozniak Law Offices	John Tebbs

DND= Did Not Disclose N/A= Not Available
Please note that some firms chose not to respond, or failed to respond in time to our inquiries.
All rights reserved. Copyright 2012 by Enterprise Newspaper Group

Providing powerful solutions since 1986.



City
Creek
Center

HUNT ELECTRIC, INC.

Full-Service Electrical Contractor

Commercial, Industrial, Mining, Data Centers, Healthcare, Institutional, Mixed-use, and Hospitality

Specialty Services

Design-Build Engineering ✎ Arc Flash Hazard Studies ✎ Power Factor Correction

Infrastructure and Traffic ✎ Transmission and Distribution

Energy Services: *Solar, Wind and Energy Efficiency Audit*

I.T.S: *Fiber Optic, DataCommunication, Security and DAS (Distributed Antenna Systems)*

Routine and Emergency Electrical Services ✎ TEGG Preventative Maintenance



801-975-8844

1863 West Alexander Street
Salt Lake City, UT 84119

HuntElectric.com

Quality • Integrity • Performance • Versatility

Top Electrical Contractors in Utah

Ranked by Gross Utah Sales in 2011

Company Name Address	Phone Fax Web	Gross Utah Sales	Bonding Capacity	# of Utah Employees	Services Offered	Owner/Managing Principal
Cache Valley Electric 875 N. 1000 W. Logan	435-752-6405 435-752-9111 cve.com	\$125.71 million	\$300 million	646	Electrical construction, voice and data cabling, fiber optics, signal & utility lgt, service substation & transmission, network integration, security integration, wireless, industrial, commercial mission critical, health care	Jim Laub
Wasatch Electric, a Division of Dynalectric Co. 2455 W. 1500 S. Ste. A Salt Lake City	801-487-4511 801-487-5032 wasatchelectric.com	\$94 million	Unlimited	440	Full service. All high, medium and low voltage capabilities, specializing in design-build, design-assist and mission critical projects, 24 hour emergency service	Tim Homer
Taylor Electric, Inc. 2650 S. 1030 W. Salt Lake City	801-413-1300 801-413-1301 taylor-electric.com	\$44.52 million	\$80 million	229	Full range of services in commercial and industrial construction which include design-build, 24/7/365 service, medium voltage, low voltage and preventive maintenance	Ryan J. Taylor
GSL Electric 8540 S. Sandy Pkwy. Sandy	801-565-0088 801-565-0099 gslelectric.com	\$35.5 million	\$60 million	265	Commercial and industrial construction, design-build engineering services, low voltage systems, service	Lance Capell
Rydalch Electric, Inc. 250 W. Plymouth Avenue Salt Lake City	801-265-1813 801-265-2166 DND	\$19 million	\$30 million	100	Electrical construction and service	Frank Rydalch, & Mark Rydalch
Eagle Electric, Inc. 7000 S. Commerce Park Dr. Midvale	801-255-8089 801-255-8108 eagle-electric-inc.com	\$4 million	\$5 million	28	Commercial, residential, low voltage, design-build, site lighting, pole bases 24 hour emergency service	Kurt Brooks
Hunt Electric, Inc. 1863 W. Alexander St. Salt Lake City	801-975-8844 801-975-0511 hunteelectric.com	DND	\$90 million	240	Traditional electrical contracting, commercial, industrial and high-end resort, design-build construction, renewable energy, infrastructure and traffic, I.T.S.-fiber optic installation	Richard Hunt

DND= Did Not Disclose N/A= Not Available
Please note that some firms chose not to respond, or failed to respond in time to our inquiries.
All rights reserved. Copyright 2012 by Enterprise Newspaper Group



PASSION.
PERSPECTIVE.
PEOPLE.

JONES WALDO TECHNOLOGY

Jones Waldo's Technology Practice Group is a multidisciplinary team dedicated to solving technology-related legal issues and handling transactions involving technology for companies in all industries.

The group's expertise include:

- » Protecting patents and other intellectual property
- » Licensing and selling technology
- » Starting technology companies
- » Handling the purchase and sale of technology-heavy companies
- » Handling venture capital and other funding transactions for technology-heavy companies

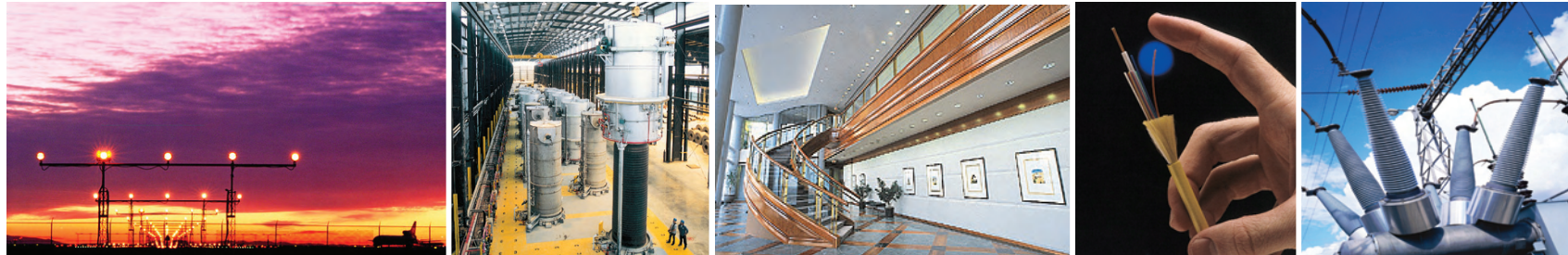
Since 1875, Jones Waldo has been providing legal services to the businesses and community organizations that support and grow the state's economy. Today, the firm continues to evolve by meeting new challenges, finding innovative solutions and advancing legal trends in the state.



JONESWALDO.COM + 801-521-3200

SALT LAKE CITY
PARK CITY
PROVO
ST. GEORGE
CHICAGO METRO

Single Source Electrical & Telecommunications Provider



**Design-Build Construction • Routine & Emergency Electrical Service
Electrical Construction — Commercial & Heavy Industrial • Transmission & Distribution
Fiber Optic Installation, Testing & Service • TeleData Communication Wiring — Voice and Data
Industrial & Commercial Security • Network Design & Implementation
Multimedia • LEED AP Certified Professionals**



CACHE VALLEY ELECTRIC

875 North 1000 West • Logan, Utah 84321 • (435) 752-6405
2345 South John Henry Dr. • Salt Lake City, Utah 84119 • (801) 908-6666

www.cve.com

Additional office in Portland, Oregon.



Top Engineering Firms in Utah

Ranked by Number of Professional Engineers in 2011

Company Name Address	Phone Fax Web	# of Professional Engineers	# of Utah Employees	# of Graduate Engineers	Engineering Services	Notable Utah Projects	Owner/Managing Principal
MWH Americas, Inc. 10619 South Jordan Gateway, Ste. 100 South Jordan	801-619-3200 801-619-4200 mwhglobal.com	45	60 90		Water, wastewater, environmental engineering	Central Weber Sewer Improvement District Plant Upgrade & Expansion	Stan Postma
Van Boerum & Frank Associates, Inc. 330 S. 300 E. Salt Lake City	801-530-3148 801-530-3150 vbfa.com	28	44 87		Mechanical, electrical, plumbing, fire protection, commissioning, energy	Galliran Center, LDS Temples throughout the world, Vernal Municipal, J.L. Sorensen Rec Center	Kim P. Harri
Spectrum Engineers 324 S. State Street Ste. 400 Salt Lake City	801-328-5151 801-328-5155 spectrum-engineers. com	25	5 66		Mechanical, electrical, technology, acoustical and fire protection engineering and lighting and theater design	Salt Lake City public Safety Complex, Adobe Utah Technology Campus, Nu Skin Innovation Center, Natural History Museum of Utah at Rio Tinto Center, Utah Valley University Life Center Complex, University of Utah Thatcher Building for Biological & Biophysical Chemistry	Stewart E. Greene & David E. Wesemann
Ensign Engineering and Land Surveying, Inc. 45 W. 10000 S. Ste. 500 Sandy	801-255-0529 DND ensignutah.com	21	26 50		Civil engineering, structural engineering	Hill AFB Military Housing Project, Desert Chemical Depot, Cedar City Aquatic Center, Legacy Crossing Theaters, LDS Church Graite Mt. Records Vault.	David Jenkins
Reaveley Engineers & Associates 675 E. 500 S. Ste. 400 Salt Lake City	801-486-3883 801-485-0911 reaveley.com	15	21 35		Structural design, seismic analysis, seismic retrofit / existing structures, analytical Studies of structures, concrete restoration, master planning, feasibility studies, programming, schematic design, design development, contract documents, construction phase services, value engineering & peer reviews	University of Utah College of Nursing, Jordan Valley Water Treatment Plant Filter Gallery & Chlorine Room, Ogden-Weber Applied Technology Center, Ogden High School Seismic Retrofit, Ph. III, University of Utah USTAR, Leonardo Seismic Upgrade, Huntsman Cancer Hospital, Ph. 2B	Parry Brown
CLC Associates, Inc. 231 W. 800 S. Ste. A Salt Lake City	801-363-5605 801-363-5604 clcassoc.com	14	14 18		Land development, site civil, erosion control, infrastructure, entitlement processing	Draper Station-Frontrunner-Anchored Transit Oriented Development, Scheels-114th S. I-15 Intersection- Sporting Goods Super Center, Ogden Wal-Mart	Matthew D. Idema
Stantec Consulton Services, Inc. 3995 S. 700 E. Ste. 300 Salt Lake City	801-260-0090 801-266-1671 stantec.com	14	1 55		Water resources, hydrogeology, water and wastewater planning and engineering, structural engineering, site engineering, environmental remediation and monitoring, wetland delineations, floodplain mapping, FEMA studies, avian and bat monitoring and mitigation	Eagle Mountain City WWTP, North Jordan canal system, 60-mile raw water supply for energy development near Vernal, wastewater treatment plan for Mesa Verde National Park, UST remediation and monitoring in Grand Teton National Park	John Wainwright
ARW Engineers 1594 West Park Circle Ogden	801-782-6008 801-782-4656 arwengineers.com	13	15 25		Structural design and consulting services, design and analysis of new structures, structural and seismic investigations, upgrade design of existing structures	Utah State University RCDE Building, Park City Recreation Center, Weber State University Residential Hall	Brent. L. White
Carollo Engineers 1265 E. Fort Union Blvd. Cottonwood Heights	801-233-2500 801-233-2501 carollo.com	11	8 17		Study, design and construction management of water and wastewater treatment and infrastructure	Central Utah WCD Utah Valley Water Treatment Plant	Rick D. Wheadon

DND= Did Not Disclose N/A= Not Available
Please note that some firms chose not to respond, or failed to respond in time to our inquiries.
All rights reserved. Copyright 2012 by Enterprise Newspaper Group

ENABLING GREAT DESIGN



DUNN ASSOCIATES, INC
Consulting Structural Engineers

380 WEST 800 SOUTH SUITE 100 | SALT LAKE CITY, UTAH 84101

(801) 575-8877 | WWW.DUNN-SE.COM


Top Engineering Firms in Utah

Ranked by Number of Professional Engineers in 2011

Company Name Address	Phone Fax Web	# of Professional Engineers	# of Utah Employees	# of Graduate Engineers	Engineering Services	Notable Utah Projects	Owner/Managing Principal
Dunn Associates, Inc. 380 W. 800 S. Ste. 100 Salt Lake City	801-575-8877 801-575-8875 dunn-se.com	11	11 19		Structural Engineering	Utah Museum of Natural History, U of U Spencer Fox Eccles School of Business, Holland Centennial Commons at Dixie State	Ronald H. Dunn
BHB Consulting Engineers 2766 S. Main St. Salt Lake City	801-355-5656 801-355-5950 bhbengineers.com	10	16 26		Full service structural engineering	U of U Medical Office Building in South Jordan, Building 6 at the Gateway, Granger H.S. Replacement, Hurricane H.S. Replacement, IHC Distribution Center	Don Barder & Chris Hofheins
Envision Engineering 244 W. 300 N. Ste. 100 Salt Lake City	801-534-1130 801-534-1080 envisioneng.com	5	4 22		Envision Engineering is a full service electrical engineering firm specializing in power distribution, lighting design, low voltage systems, studies, programming, and sustainable design for educational, religious, municipal, health care, commercial, and industrial facilities.	WSU Davis Campus Classroom Building & Central Plant; BYU Life Science Museum Expansion; LDS Temple - Ft. Lauderdale, FL; LDS Temple - Ft. Collins, CO; LDS Temple - Provo Tabernacle; SLCC Herriman Campus Master Plan; Gateway 6 Office Building	Jeff Owen & Dave Whitton
Mid-State Consultants, Inc. 1475 N. 200 W. Nephi	435-623-8601 435-623-8610 mscon.com	5	2 70		Mid-State is a Nationwide Engineering Firm with its corporate office in Nephi, Utah and multiple offices across the country. We provide telecommunications engineering services for inside and outside plant, design, CAD, records conversion, right-of-way acquisition, GPS field verification and mapping.	Mid-State continues to provide assistance to independent telephone companies in Utah with various projects. We also recently assisted a higher learning institution with engineering services for a fiber optic facilities connecting multiple sites throughout Salt Lake City and between its campus and a data center.	Steve Kidd
Dominion Engineering 5684 S. Green St. Murray	801-713-3000 801-713-3030 dominioneng.net	4	DND 18		Civil Engineering, land planning, and survey	McDonalds, Harraman Town Center, Freeport #7, The Point Building #6	DND
J.M. Williams & Associates/ AE URBIA 2875 S. Decker Lake Dr. Ste. 275 Salt Lake City	801-575-6455 801-575-6456 aeurbia.com	2	2 10		Structural engineering for all building types, seismic reports and upgrades, property reports, architecture, design-build, integrates delivery, commercial and residential.	LDS Motion Picture Studio Jerusalem Set, Quality Bicycle Products, Thanksgiving Point Wellness Center, Gardener Mountain home, Independence Student Housing	James M. Williams

DND= Did Not Disclose N/A= Not Available
Please note that some firms chose not to respond, or failed to respond in time to our inquiries.
All rights reserved. Copyright 2012 by Enterprise Newspaper Group

Don't be left out



BOOK of LISTS

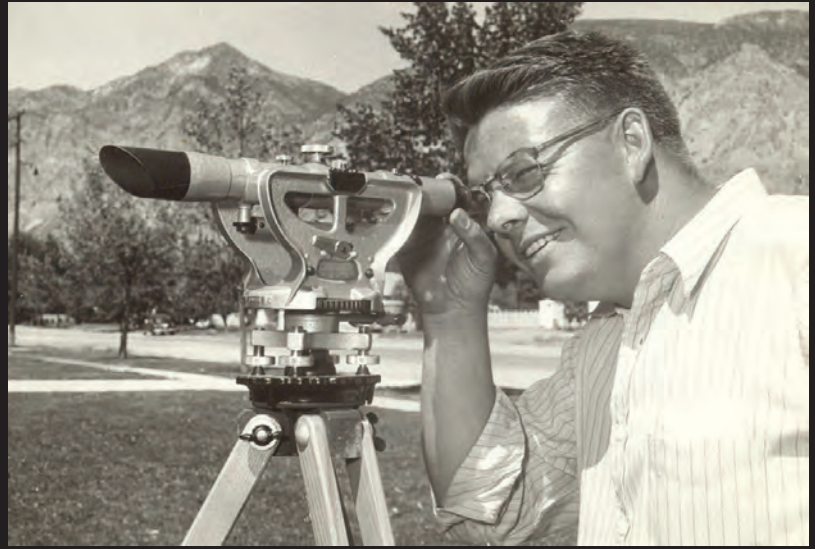
2013

Have your business
included in next year's
Book of List.

For more information contact
Ann Johnson
801-533-0556 ex. 207
ann@slentprise.com

“Building Value for Over 60 Years”

Trusting
Honest
Committed
Passionate



Since 1951, Wadman Corporation has been *Passionate* about providing the best customer service and building experience for our clients. As your General Contractor, we are *Committed* to building long term relationships. Whether you are building your first project with Wadman or you are a repeat client, you can be confident you are receiving the best value and the best service.

Education: K-12 & Higher Education Office Industrial Hospitality
Multi-family Resort Retail Religious Government Health Care



2920 South 925 West
Ogden, Utah 84401
801.621.4185
www.wadman.com



W.W. Clyde to Build in Nevada with Four Horses

With the surplus of transportation contracts presently available, individuals like Wilford W. Clyde are making their way into the construction industry with little more than a few horses and some dirt scrapers.

From the Heart of Utah

The resulting depression from the absence of military contracts from the Great World War has had a drastic effect on small farming communities like Springville, Utah, and leaves many wondering how to make ends meet without departing the state in search of the proverbial "greener pasture."

But one native has sought to rise above the feeling of helplessness that has taken so many local farmers. Wilford W. Clyde previously worked as an engineer at the Spring Canyon coal mining operation, but is now trying his hand as a highway construction general contractor.

Equipped with little beyond a "Fresno and four," or a dirt-moving scraper and four horses, this aspiring individual just started a joint venture with family to complete a road construction project near Pequop Summit in Nevada on an area west of Wendover, a contract valued at \$150,000.

Due to Wilford's position as general contractor, he'll have to learn the inner workings of the trade, while still finding time to fill multiple roles as superintendent,



As construction technology advances, Wilford W. Clyde will soon purchase fuel-powered machinery for future jobs in place of horses.

bookkeeper, blacksmith, storekeeper, veterinarian and cook. Fortunately, Wilford has a skill that will win over good and loyal workers every time: He's an exceptional cook.

His plentiful breakfasts of hash-browned potatoes, hotcakes, eggs and bacon have his men not only deliver a

better day's work, but also helps retain them as workers. Wilford will have no problem keeping the troops in line with his strong will to survive and his aptitude as a cook.

Springville Values

When asked what the number one rule of construction was, Wilford responded, "Look after your business. You can't just win a job and send somebody out to do it. You've got to go out yourselves and watch everything closely."

Wilford attributes his success to his alignment with the following four company values:

- We value people
- Our word is our bond
- Always give a full measure
- Quality products and services at the best value

Wilford believes that in order to create a positive culture of growth and ethical behavior, he needs to make it present in the workplace. By establishing this culture early on in his career, Wilford has established the foundations for a legacy that will last for decades to come.

1926 Company formed

1930s

1933 W.W. Clyde & Co. became incorporated under the laws of the State of Utah

1937 Company was completing more than \$1.5 million in contracts yearly

1940s

The Salt Lake City International Airport expansion in the 1940s

1950s

State Street in Salt Lake City in the 1950s

1960s

The Arthur V. Watkins Dam and Starvation Bridge in the 1960s

1970s



90 Years Later and 5 Million Horses Stronger

W.W. Clyde & Co. continues to shape Utah and surrounding States with its unique approach to innovation and performs the first ever bridge slide in the state of Nevada.

On Solid Ground

Modern architecture is driving innovation in construction, and W.W. Clyde & Co. is leading the charge. Building on its mantra, "Tough Projects Innovative Solutions," the modern-day Clydes are setting the pace. In the past five years, W.W. Clyde & Co. has won dozens of industry awards including: UDOT Contractor of the Year, Roads & Bridges Top 10 Roads, and AGC of Utah Achievement of Safety Excellence.



Mesquite Nevada: First ever accelerated bridge construction in the state saving \$10 million in costs.





Modern Innovation

On January 10, 2012, W.W. Clyde & Co. and the Nevada Department of Transportation made state history with its first ever bridge slide. The bridge move was part of the I-15 West Mesquite Interchange Project, intended to improve connectivity for commuters.

The bridge slide was accomplished using accelerated bridge construction (ABC). Over the course of two 56-hour periods, W.W. Clyde & Co. demolished the existing bridges and slid the new ones into place with hydraulic jacks, Teflon pads on steel rails and liquid dish soap for lubrication.

W.W. Clyde & Co. continues to provide innovation to contract owners and partners. The company is reputed to have built more miles of road in Utah than any other single contractor. Driven by the values set by Wilford in 1922, W.W. Clyde & Co. is paving the road for the future.

2012 FACT SHEET

-  W.W. Clyde & Co. has approximately 3,000 tires on the ground, with about 2,500 being light and medium, and 500 that are considered giant tires.
-  W.W. Clyde & Co. employs over 450 people during the peak work season.
-  Work has been done by W.W. Clyde & Co. in Utah, Nevada, Arizona, New Mexico, Colorado, Wyoming, Idaho and California.
-  2012 marks the inauguration of W.W. Clyde & Co.'s social media sites. Tell us your legacy at [#BuildMyLegacy](#).



Follow us!

The Utah Power and Light plant and substation, the LDS Church Office Building as well as the ZCMI center in the 1970s



The Green River Bridge and I-215 Belt Route in the 1980s



Barney's Canyon Pipeline, Snow Basin and the South Towne Center in the 1990s



2002 Winter Olympics projects, Segment 4 of the Legacy Parkway project, Pioneer Crossing project with Diverging Diamond Interchange and I-15 Beck Street in the 2000s



Top Northern Utah Home Builders*

Ranked by Value of Residential Permits Issued in 2011**

Company Name Address	Phone Web	Value of Residential Permits Issued	# of Units	Average Value of Unit	# of Permits Issued	Average Value of Permit
Sierra Homes Construction 470 N. 2450 W. Tremonton	435-257-4963 sierrahomes.com	\$7,530,188	46	\$163,700	46	\$163,700
Horizon Development and Management 1433 N. 11075 W. Ste. 104 Farmington	801-231-5318 DND	\$5,988,474	27	\$221,795	2	\$2,994,237
Kartchner Homes 601 W. 1700 S. Ste. A Logan	435-755-7080 kartchnerhomes.com	\$5,906,300	32	\$184,572	30	\$196,877
Visionary Homes 925 W. 200 N. Ste. A5 Logan	435-792-6000 buildwithvisionary.com	\$3,555,670	21	\$169,318	21	\$169,318
Immaculate Construction 2 N. Main St. Ste. 1 Logan	435-213-3758 DND	\$3,039,314	14	\$217,094	14	\$217,094
Neighborhood Nonprofit Housing Corporation 95 Golf Course Rd. Ste. 104 Logan	435-753-1112 nnhc.net	\$1,994,400	14	\$142,457	14	\$142,457
Lifestyle Homes 41 E. 400N Ste. 134 Logan	435-760-1700 buildwithlifestyle.com	\$1,757,705	12	\$146,475	12	\$146,475
Westates Construction 95 River Bend Way North Salt Lake	801-383-3252 DND	\$1,672,543	9	\$185,838	9	\$185,838
Immaculate Construction Inc PO Box 674 Logan	435-787-4915 DND	\$1,645,800	12	\$137,150	12	\$137,150
Highmark Construction 399 N. Main St. Logan	435-752-4775 highmarknow.com	\$1,157,147	8	\$144,643	8	\$144,643
Smart Construction PO Box 548 Garden City	435-770-2084 smartconstruction-bearlake.com	\$1,128,000	3	\$376,000	3	\$376,000
DRD Property Development 1332 Orchard Heights Dr. Logan	435-213-5322 drdpropertydevelopment.com	\$1,000,000	10	\$100,000	10	\$100,000
Target Homes 3055 S. 1250 W. Brigham City	435-730-3778 DND	\$955,625	4	\$238,906	4	\$238,906
Westates Construction Company 95 River Bend Way Ste. A North Salt Lake	801-383-3252 DND	\$864,500	5	\$172,900	5	\$172,900
Mt Sterling Construction 925 W. 200 N. Ste. A5 Logan	435-757-4603 mtsch.com	\$825,716	3	\$275,239	3	\$275,239
Champlin Development 40 W Cache Valley Blvd. Ste. 1 Logan	435-512-9127 champlindevelopment.com	\$760,591	5	\$152,118	5	\$152,118
JM Reed Construction 265 N. Main St. Smithfield	435-757-7557 DND	\$647,331	3	\$215,777	3	\$215,777
Sorensen & Gnehm Construction 743 Stewart Hill Dr. Logan	435-994-0098 DND	\$585,735	2	\$292,868	2	\$292,868
B&J Custom Building 708 W. 1800 N. Ste. 3A Logan	435-755-8796 bandjcustom.com	\$585,640	3	\$195,213	3	\$195,213
Mike Schultz Construction 1798 W. 5150 S. Ste. 103 Roy	801-525-0681 DND	\$565,034	2	\$282,517	2	\$282,517
J&M Contractors 2508 E. 8240 S. Ogden	801-737-0284 DND	\$540,299	3	\$180,100	3	\$180,100
Precision Construction PO Box 387 Morgan	801-330-5855 DND	\$539,214	8	\$67,402	8	\$67,402
Cache Valley Mech 160 S. 400 E. Hyde Park	435-994-1574 DND	\$486,120	2	\$243,060	2	\$243,060
HH&R 9355 N. 4400 W. Tremonton	435-230-0041 DND	\$479,517	1	\$479,517	1	\$479,517
Dan Hunsaker Construction PO Box 82 Wellsville	435-764-1457 DND	\$479,413	3	\$159,804	3	\$159,804

DND= Did Not Disclose N/A= Not Available
Please note that some firms chose not to respond, or failed to respond in time to our inquiries.
All rights reserved. Copyright 2012 by Enterprise Newspaper Group
* Northern Utah is defined by the following counties: Box Elder, Cache and Rich counties
** List information provided by Construction Monitor and found at constructionmonitor.com

AT THE READY



We've got what it takes to keep you going strong.

World-class service, local knowledge and superior products—these are the defining elements you've come to expect from Wheeler Machinery Co. Quality customer support is key to building trust and delivering value. Trust Wheeler for solutions tailored to fit your business and situation.

www.wheelercat.com | 800-662-8650 | 10 convenient locations

Wheeler



Top Southern Utah Home Builders*

Ranked by Value of Residential Permits Issued in 2011**

Company Name Address	Phone Web	Value of Residential Permits Issued	# of Units	Average Value of Unit	# of Permits Issued	Average Value of Permit
Salisbury Development LLC 494 W. 1300 N. Springville	801-491-9091 alwaysaffordablehomes.com	\$22,992,276	101	\$227,646	101	\$227,646
Ence Homes 619 S. Bluff St. Tower 2 Ste. 2A St George	435-628-0936 encehomes.com	\$12,069,236	73	\$165,332	73	\$165,332
SunRiver Construction LLC 1404 Sunriver Pkwy. Ste. 200 St George	435-673-4300 sunriver.com	\$6,866,000	55	\$124,836	55	\$124,836
New Trend Construction PO Box 1704 St George	435-632-6673 DND	\$4,781,433	17	\$281,261	17	\$281,261
Henry Walker Homes 1173 S. 250 W. Ste. 505D St George	435-773-0707 henrywalkerhomes.com	\$4,711,227	22	\$214,147	12	\$214,147
S&S Construction 1363 E. 170 S. Ste. 301 St George	435-628-1904 sshomes.info	\$3,909,066	24	\$162,878	24	\$162,878
High Desert Homes Inc 2538 E. 2390 S. Cir. St. George	435-467-9938 highdeserthomesonline.com	\$3,470,233	13	\$266,941	13	\$266,941
Bingham Construction 2122 W. 1800 N. St George	435-467-5360 DND	\$3,251,170	10	\$325,117	10	\$325,117
Split Rock Construction LLC 906 N. 1400 W. St George	435-688-7222 splitrockinc.com	\$3,138,000	12	\$261,500	12	\$261,500
Custom Contracting Corp 2299 Meadow View Cir. Santa Clara	435-313-8355 DND	\$2,923,000	17	\$171,941	17	\$171,941
PK White Construction 1301 W. Indian Hills Dr. St George	435-632-2732 DND	\$2,500,484	18	\$138,916	18	\$138,916
Ivory Homes 3143 S. 840 E. St George	435-986-6900 ivoryhomes.com	\$2,218,000	21	\$105,619	13	\$170,615
Pride Homes Inc PO Box 380264 Ivins	435-619-1147 pridehomesinc.com	\$2,213,820	8	\$276,728	8	\$276,728
Rock Solid Builders 4548 S. 1500 W. Hurricane	435-631-0011 DND	\$2,089,259	12	\$174,105	12	\$174,105
Velocity Homes & Construction PO Box 1977 Hurricane	435-586-0843 velocitycommunities.com	\$1,884,016	11	\$171,274	11	\$171,274
Horizon Homes 2351 Leda Ln. Santa Clara	435-229-2324 DND	\$1,836,724	11	\$166,975	11	\$166,975
Son Builders 1883 W Royal Hunte Dr Ste 103 Cedar City	435-865-9457 DND	\$1,832,000	10	\$183,200	10	\$183,200
Bishop Homes 217 Cottage Ave. Sandy	801-569-0404 bishophomesutah.com	\$1,701,151	5	\$340,230	5	\$340,230
Rock Tite Construction 2461 S. Arabian Way Washington	435-272-2824 DND	\$1,641,448	8	\$205,181	8	\$205,181
G Brent Smith Construction Inc PO Box 758 Santa Clara	801-641-1127 DND	\$1,603,000	5	\$320,600	5	\$320,600
Gemstone Homes Inc 2608 W. 510 N. Hurricane	435-635-8622 gemstoneproperties.com	\$1,488,000	12	\$124,000	12	\$124,000
Pride Point Construction 4241 S. River Rd. Ste. B St George	435-673-3300 pridepoint.com	\$1,414,000	6	\$235,667	6	\$235,667
Coral Canyon Builders 2250 N. Coral Canyon Blvd. Washington	435-634-9455 DND	\$1,389,768	10	\$138,977	10	\$138,977
Infinity Builders 2772 W. 5200 N. Cedar City	435-868-1005 DND	\$1,385,924	9	\$153,992	9	\$153,992
American Heritage Homes 2461 S. Arabian Way Washington	435-272-2824 americanheritagehomesut.com	\$1,384,200	8	\$173,025	8	\$173,025

DND= Did Not Disclose N/A= Not Available
Please note that some firms chose not to respond, or failed to respond in time to our inquiries.

All rights reserved. Copyright 2012 by Enterprise Newspaper Group
*Northern Utah is defined by the following counties: Beaver, Emery, Garfield, Grand, Iron, Kane, Millard, Piute, San Juan, Sanpete, Sevier, Washington and Wayne counties

**List information provided by Construction Monitor and found at constructionmonitor.com



JOHN DEERE

Dedicated to providing Solutions for You!

Quality; Our Certified Technicians and Certified Parts Advisors know what uptime means to your bottom line. Getting it right the first time means getting you back out on the job so that you can succeed.

Resources; Your total machine health is supported by JD Link, Fleetcare, Oil Analysis, iT4 emissions solutions and 24/7 emergency parts and service; Providing you the knowledge and support to make well informed fleet maintenance decisions.

Commitment; We're here to help. You can count on Honnen Equipment to provide you with world class construction equipment, excellent customer service and superior product support. We strive to come up with new solutions for you, our customer, every day.

We've been established since 1963 and we have 10 locations to better serve you throughout the Rocky Mountain region.

**COLORADO - WYOMING
UTAH - IDAHO**



**HE HONNEN
EQUIPMENT**

1-800-646-6636

www.honnen.com

Top Wasatch Front Home Builders*

Ranked by Value of Residential Permits Issued in 2011**

Company Name Address	Phone Web	Value of Residential Permits Issued	# of Units	Average Value of Unit	# of Permits Issued	Average Value of Permit
Ivory Homes 970 Woodoak Ln. Salt Lake City	801-268-0700 ivoryhomes.com	\$104,727,969	534	\$196,120	431	\$242,988
Edge Homes PO Box 764 Spanish Fork	801-794-0030 edgehomes.com	\$45,129,062	219	\$206,069	219	\$206,069
DR Horton 12351 Gateway Park Pl. Ste. Draper	801-571-7101 drhorton.com	\$37,277,443	183	\$203,702	163	\$228,696
Richmond American Homes 849 Levoy Dr. Ste. 100 Taylorsville	801-743-7440 richmondamerican.com	\$34,981,811	154	\$227,155	154	\$227,155
Garbett Construction 273 N. East Capital St. Salt Lake City	801-456-2430 garbethehomes.com	\$31,027,627	228	\$136,086	228	\$136,086
Castle Creek Homes 1798 W. 5150 S. Roy	801-525-0681 castlecreekhomes.com	\$27,474,851	130	\$211,345	127	\$216,337
Salisbury Development 494 W. 1300 N. Springville	801-491-9091 alwaysaffordablehomes.com	\$25,122,158	106	\$237,001	107	\$234,787
Henry Walker Homes 500 N. Marketplace Dr. Ste. 201 Centerville	801-677-1600 henrywalkerhomes.com	\$24,399,089	96	\$254,157	96	\$254,157
Fieldstone Homes 1265 E. Fort Union Blvd. Ste. 350 Cottonwood	801-233-8300 fieldstone-homes.com	\$24,265,017	112	\$216,652	112	\$216,652
Destination Homes 67 S. Main St. Ste. 300 Layton	801-593-9993 destinationhomes.com	\$22,880,122	102	\$224,315	99	\$231,112
Candlelight Homes 1099 W. South Jordan Pkwy. South Jordan	801-495-3414 candlelighthomes.com	\$19,368,489	82	\$326,201	82	\$326,201
Holmes Homes 126 W Sego Lily Dr Ste 250 Sandy	801-572-6363 holmeshomes.com	\$17,487,299	93	\$188,035	89	\$196,487
Nilson Homes 5617 S 1475 E Ogden	801-392-8100 nilsonhomes.com	\$15,116,446	54	\$279,934	54	\$279,934
McArthur Homes 9962 S Redwood Rd South Jordan	801-253-9910 mcarthurhomes.com	\$13,786,658	66	\$208,889	55	\$250,667
Magleby Company PO Box 990 Pleasant Grove	801-785-9998 paulmagleby.com	\$11,602,110	3	\$3,867,370	3	\$3,867,370
Perry Homes 17 E Winchester St Ste 20 Murray	801-264-8800 perryhomesutah.com	\$11,292,277	54	\$209,116	54	\$209,116
Wasatch Regional Builders LLC 175 E. 400 S. Ste. 160 Salt Lake City	801-961-1002 DND	\$9,949,982	78	\$127,564	78	\$127,564
Rainey Homes 520 N. Kays Dr. Kaysville	801-444-9400 raineyhomes.com	\$9,714,201	34	\$285,712	34	\$285,712
Symphony Homes 526 N. 400 W. North Salt Lake	801-298-8555 symphonyhomes.com	\$9,112,561	35	\$260,359	35	\$260,359
Home Center Construction 2264 Williamsburg Cir. West Jordan	801-569-2346 homecenterconstruction.com	\$9,031,539	34	\$265,634	34	\$265,634
Woodside Homes 39 E. Eagle Ridge Dr. North Salt Lake	801-299-6700 woodsidegroupinc.com	\$9,005,141	49	\$183,778	49	\$183,778
Brighton Homes 320 W. 500 S. Ste 210 Bountiful	801-397-9755 brightonhomes-utah.com	\$8,071,876	31	\$260,383	31	\$260,383
Brad Reynolds Construction PO Box 17958 Salt Lake City	801-281-2200 bradreynoldsconstruction.com	\$7,897,027	51	\$154,844	23	\$343,349
Cadence Homes 3400 Ashton Blvd. Ste. 180 Lehi	801-768-0503 cadencehomes.com	\$7,645,461	30	\$254,849	30	\$254,849
Patterson Construction 11038 Highland Blvd. Highland	801-756-7303 pattersonconstruction.com	\$7,557,814	39	\$193,790	39	\$193,790

DND= Did Not Disclose N/A= Not Available
Please note that some firms chose not to respond, or failed to respond in time to our inquiries.
All rights reserved. Copyright 2012 by Enterprise Newspaper Group
*Northern Utah is defined by the following counties: Carbon, Davis, Duchesne, Juab, Morgan, Salt Lake, Summit, Tooele, Uintah, Utah, Wasatch and Weber counties
**List information provided by Construction Monitor and found at constructionmonitor.com

HR

HOWE RENTAL & SALES

LOCALLY OWNED AND OPERATED SINCE 1953



- ALL EQUIPMENT IS SAFETY INSPECTED
- PROMPT DELIVERY

Genie S-80X

NEED EQUIPMENT?

- :: Forklifts
- :: Scissor & Boom Lifts
- :: Scaffolding
- :: Excavators
- :: Mixers
- :: Welders
- :: Sweepers & Scrubbers
- :: Compressors
- :: Compaction Equipment
- :: Skid Loaders
- :: Backhoes
- :: Dump Trucks

24 Hour Emergency Service

- Ogden
- Park City
- Layton
- Provo



CALL TODAY! 801.463.7997

Toll Free 866.436.HOWE • Fax 801.463.7488
4235 South 500 West • Murray, UT 84123

Top Manufacturing Counties in Utah

Ranked by Manufacturing Workforce

County	Total Population	Total Non-Farm Workforce	Manufacturing Workforce	County Average Wage	Manufacturing Wage in County	Number of Manufacturing Establishments	Top Companies in County
Salt Lake	1.05 million	602,353	52,471	\$3,667	\$4,529	1,640	L3 Communications (Communications Equipment) The Sun Products Corporation (Soap & Detergent) Merit Medical Systems (Surgical & Medical Instrument)
Utah	530,400	189,431	16,476	\$2,922	\$4,000	592	IM Flash Technologies (Electronic Products) Nestle USA (Food) US Synthetic Corp. (Nonmetallic Mineral Product)
Weber	234,400	91,866	12,047	\$2,985	\$3,970	253	Autoliv (Motor Vehicle Equipment) Fresenius USA Manufacturing Inc. (Medical Instrument) Kimberly Clark Worldwide Inc. (Sanitary Paper Product)
Cache	114,700	51,203	10,665	\$2,514	\$3,197	228	Icon (Sports & Athletic Equipment) Schreiber Foods (Cheese) Hyclone Laboratories Inc. (Pharmaceutical)
Davis	311,800	108,930	10,535	\$3,135	\$4,212	287	Lifetime Products (Sports & Athletic Equipment) ATK Space Systems/Alliant (Aerospace) Utility Trailer Manufacturing Co. (Truck Trailer)
Box Elder	50,300	16,089	4,478	\$2,650	\$3,777	73	ATK Launch Systems (Aerospace) Autoliv (Motor Vehicle Equipment) Nucor Steel (Steel Mill)
Washington	141,600	49,043	2,538	\$2,473	\$2,894	175	Viracon (Glass Product) Wilson Electronics (Communications Equipment) RAM Manufacturing (Fabricated Metal Products)
Tooele	59,300	16,020	1,725	\$3,632	\$4,110	40	US Magnesium (Primary Metals Manufacturing) Detroit Diesel Remanufacturing (Machinery) Morton international (Food)
Iron	46,700	15,090	1,351	\$2,431	\$3,240	74	GENTAK (Foam Product) American Pacific Corp. (Chemical Manufacturing) Smead Manufacturing (Paper Products)
Summit	37,600	21,043	799	\$3,021	\$5,156	61	Triumph Gear Systems (Aircraft Parts & Equipment) Skullcandy Inc (Electronic Products) Reese Metal Work (Metalworking)
Wasatch	24,400	6,329	196	\$2,686	\$3,437	34	Redmond Minerals (Nonmetallic Mineral Mining) Probar (Food) Mountain Cabinetry Inc. (Cabinetry)
Statewide	2.81 million	1.25 million	116,412	\$3,272	\$4,124	3,677	

DND= Did Not Disclose N/A= Not Available
Population data from U.S. Census Bureau, 2011 est. All other data from Utah DWS, Q2, 2012
All rights reserved. Copyright 2012 by Enterprise Newspaper Group



MEP's 5P Strategy Gets Your Business To The Next Level



PEOPLE



PRODUCT



PROCESS



PLANET



PROFIT

Find Out How At
MEP.ORG



GET TO THE NEXT LEVEL

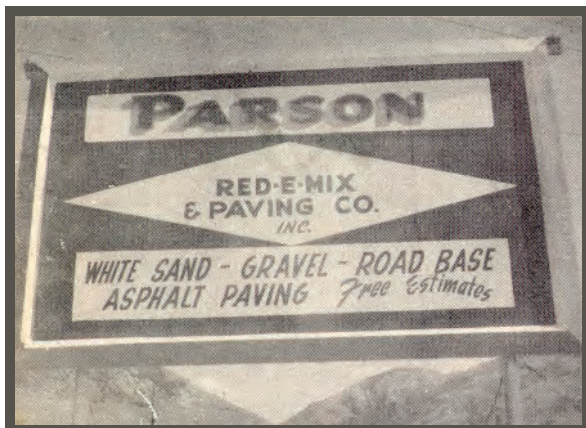


STAKER | PARSON
C O M P A N I E S

60
YEARS

WWW.STAKERPARSON.COM

BUILDING THE PREFERRED SOURCE FOR 60 YEARS



Jack B. Parson Cos. was founded in Smithfield, Utah in 1952



JBP started with a fleet of about 12 mixer trucks



Jack B. Parson, Jr. with father Jack B. Parson

2012 marks the 60th anniversary for Staker Parson Companies. From humble beginnings, the company has grown to become Utah's leading supplier of construction materials and services. You may be familiar with the name, but let's take an in-depth look at Staker Parson: where it all began, where they have been and, most importantly, where they are going.

WHERE IT ALL BEGAN

The company's history began in 1927 when 15-year-old Jack B. Parson boarded a train and headed off to help his father build roads. That summer's experience developed into a lifelong passion for Jack. He quickly learned to operate every piece of equipment in the fleet and gained a wealth of experience in the construction industry. In 1952, Jack founded Jack B. Parson Companies (JBP) in Smithfield, Utah. With a vision to supply quality construction materials and expert construction services, the company grew to become one of the largest of its kind in Utah and Idaho.

Stu, Val, and Gordon Staker started Staker Paving and Construction Company in 1969. The company grew into one of the largest asphalt paving firms in the western U.S. Jack B. Parson Companies and Staker Paving and Construction Company merged to form Staker Parson Companies in 2001.

WHERE THEY'VE BEEN

A company doesn't stick around for 60 years without encountering—and more importantly, overcoming—challenges. The early 1980s presented a challenging business environment. Interest rates were very high, making it hard for businesses to pay off debt. An increase in the cost of energy and diesel fuel made it difficult to break even, let alone make money on projects that were already underway.

Jack B. Parson, Jr., former JBP president, recalls, "There were times when I wondered if we'd make it through the challenging economy of the 80s. The cost to do business skyrocketed and margins on work were extremely tight. We really refocused our business at that time and faced the difficult decision to auction much of our equipment. We became more selective in the jobs we bid and focused on our aggregate reserves and paving."

During this challenging time, JBP completed work for Great Salt Lake Minerals located west of Ogden. The project involved year round work to rebuild dikes and provided much needed revenue to help the company pull through the challenging economy.

WHERE THEY ARE GOING

Staker Parson Companies aspires to be the Intermountain region's preferred source of quality sand, rock, landscape products, ready-mixed concrete, asphalt, paving, excavation and construction services. The company employs nearly 2,000 people at more than fifty locations, serving a wide variety of contractors, businesses, government agencies, municipalities and homeowners in Utah, Idaho, Oregon, Nevada and Arizona.

"I am very proud of the legacy built by my grandfather," says Scott Parson, Staker Parson president and CEO. "He built his business to provide top quality products coupled with great customer service. By following his formula for success, we have expanded our business so that we now offer the broadest variety of products across the broadest geography of any supplier in Utah. Our success would not have been possible without our great customers and employees."

Staker Parson Companies has helped build some of Utah's most notable projects including:

- I-15 CORE in Utah County
- Utah Data Center
- Adobe Systems Campus
- United States District Federal Courthouse
- City Creek Center
- Procter and Gamble Project Gold Rush
- Falcon Hill
- Utah Museum of Natural History
- UDOT I-15 Lane Gain Project in Davis County
- UDOT SR-30 Project from Cache to Box Elder County
- Utah State Capitol
- Bear Lake Marina



In 2012, Staker Parson was honored with a Best of State Medal for manufacturing-mineral mining/stone quarrying and received the "Best of the Best" trophy in the production & manufacturing division.

Staker Parson's people and projects are the recipients of many local and national awards. In 2012, the Utah Best of State organization honored the company with a Best of State Medal for manufacturing-mineral mining/stone quarrying and awarded the company with the "Best of the Best" trophy in the production & manufacturing division.

In 2011, the company received the National Asphalt Pavement Association's prestigious Sheldon G. Hayes award, recognizing the UDOT I-15 Farmington to Gordon Avenue project as the single best highway pavement project in the nation.

Ready-mix driver Bob Lowery was honored by the National Ready Mixed Concrete Association (NRMCA) as the national 2011 Driver of the Year. The



Bob Lowery named the 2011 Driver of the Year by the NRMCA

NRMCA has also honored the company for Producer Excellence in Quality and two of the company's ready mix plants earned the Green-Star certification for strong environmental and sustainability initiatives.

The company also demonstrates its commitment to strengthening Utah and its communities by supporting many community and education programs including Parents Empowered, Most Don't, 4-H, Boy Scouts of America, and the Christmas Box House. Staker Parson's educational outreach program, "Rocks Build Our World," dovetails with the geology science unit for Utah's elementary school curriculum reaching several thousand

students each year. The company also helped found the Parson Construction Management Technology Program at Weber State University.

"In everything we do, we strive to build The Preferred Source for our customers, employees, stakeholders and neighbors," says Parson. "That was the way my grandfather conducted business and it's the same formula we follow today."

What does it mean to be The Preferred Source? To Staker Parson Companies, it means creating innovative products and solutions. It means safely building projects of the highest quality. It means developing and training employees. It means a quality and timely delivery with every load of material. It means supporting and giving back to the community. In short, it means award-winning service and projects for 60 years – and looking forward to many more.



Staker Parson's work on I-15 from Farmington to Gordon Avenue was awarded as the best asphalt pavement project in the US in 2011.



Top Rock Products, Ready Mix Concrete and Asphalt Firms in Utah

Ranked by Number of Utah Employees

Company Name Address	Phone Fax Web	# of Utah Employees	# of: Dump Trucks	# of Units Sold of: Aggregate Tons	Belly Dumps	Asphalt Tons	Concrete Mixer Trucks	Ready Mix Cubic Yards	Type of Products/Services	Owner/Managing Principal
Staker Parson Companies 2350 S. 1900 W. Ogden	801-731-1111 801-731-8800 stakerparson.com	1,815	156	DND					Sand, rock, landscape products, ready-mixed concrete, asphalt, paving and construction services	Scott Parson
			9	DND						
			244	DND						
Geneva Rock Products 1565 W. 400 N. Orem	801-765-7800 801-281-0076 genevarock.com	1,000	114	7,225,302					Asphalt, concrete, aggregate, sand, gravel, construction services, rock, micro-surfacing, landscape products, paving services	Jim Golding
			26	802,729						
			265	985,973						
Granite Construction Company 1000 N. Warm Springs Rd. Salt Lake City	801-526-6000 801-526-6049 graniteconstruction.com	700	15	1,500,000					Engineered fill, hot and warm mix asphalt, state spec road base, type 1,2 & 3 slurry aggregates, washed sand and gravel roofing rock	Brad Sweet
			DND	0						
			0	NA						
Kilgore Contracting 7057 W. 2100 S. Salt Lake City	801-250-0132 801-250-0671 kilgorecontracting.com	580	75	DND					Rock, sand, gravel, asphalt, paving site work, underground, earthwork & asphalt maintenance	Jason T. Kilgore
			30	DND						
			NA	DND						
Sunroc Corporation 180 N. 300 E. St George	435-634-2200 435-634-0561 sunroc.com	300	60	2,559,123					Concrete, masonry products, sand, gravel, aggregate, rock, stone, landscape products, construction services	Rhys Weaver
			21	DND						
			95	256,158						
Altaview Concrete 7057 W. 2100 S. Salt Lake City	801-250-0132 801-250-0671 altaviewconcrete.com	150	NA	DND					Concrete and concrete pumping	Scott Reynolds
			5	DND						
			120	DND						
Westroc, Inc 670 W. 220 S. Pleasant Grove	801-785-5600 801-785-7408 westrocinc.com	84	6	690,000					Ready-mixed concrete, aggregates	Cy Spurlino
			6	0						
			43	156,000						

DND= Did Not Disclose N/A= Not Available
Please note that some firms chose not to respond, or failed to respond in time to our inquiries.
All rights reserved. Copyright 2012 by Enterprise Newspaper Group

WE MEAN BUSINESS

825 North 300 West, Suite C309 • Salt Lake City, Utah 84103
Phone: (801) 533-0556 • FAX: (801) 533-0684
www.slenterprise.com


UTAH'S BUSINESS JOURNAL

A FOUNDATION YOU CAN TRUST

CITY CREEK

Some things are built to stand the test of time. Growing up out of the heart of downtown Salt Lake City, the City Creek Center redevelopment project was built on a solid foundation made from the best concrete on Earth. City Creek Center boasts world-class shopping, dining, and entertainment in a sustainable urban community setting, and Geneva Rock is proud to provide the concrete that holds it all up.



Top Structural Steel Companies in Utah

Ranked by Gross Utah Sales in 2011

Company Name Address	Phone Fax Web	Gross Utah Sales		Notable 2011 Projects	Specialities	Services Offered	Top Local Executive
		Average Size of Project (\$)					
SME Steel Contractors, Inc 5801 W. Wells Park Rd. West Jordan	801-280-0711 801-280-3460 smesteel.com	\$170 million \$7.5 million		Salt Lake City Federal District Courthouse, Newport Beach Civic Center, Questar Office Building, Salt Lake Public Safety Building, Smith Center for the Performing Arts	Structural steel fabrication and erection for hotels, casinos, convention centers, retail centers, office buildings, hospital and medical office buildings and government buildings	Structural steel fabrication and erection, turnkey steel construction services, design assist service consultation, detailing, shop fabrication, field erection, ornamental metals	Wayne Searle
Petersen Incorporated 1527 N. 2000 W. Ogden	801-732-2000 801-732-2098 peterseninc.com	\$90 million \$200,000		Nuclear Waste Vitrafacation Melters	Plate Fabrication, mining equipment, process equipment	Engineering, fabrication, machining, field erection, ware housing & distribution	Rob Despain
GEM Building 1025 N. Water Lane Brigham City	435-723-5000 435-723-2353 gembuildings.com	\$30 million \$750,000		Utah Museum of Natural History, U of U Daybreak Specialty Care Center, Kennecott Truck Shops, USU Regional Distance Learning, Bishop's Storehouse, Brigham City Temple, Adobe Omniture Office	Full Design Services including engineering, drafting, and detailing for projects anywhere in the country and world. State of the art fabrication facility for projects anywhere in the intermountain west area.	Same as Specialities	Dave Isaacson
Mark Steel Corporation 1230 W. 2000 S. Salt Lake City	801-521-0670 801-303-2040 marksteel.net	\$20 million \$300,000		DND	ASME VIII Div 1, heavy plate fabrication, sophisticated paint endorsement, AISC certified, modules, large complex structural and mechanical assemblies	Stress relieving, paint mechanical assembly	James R. Vermich
Tech-Steel, Inc Bldg D2 Freeport Center Clearfield	801-328-2543 801-546-6320 tech-steel.com	\$13 million DND		Climax Molybdenum, Merit Medical Production, NuSkin Innovation Center	Structural steel and misc. metals fabrication, steel joists, metal decking and erection for commercial and industrial projects	Full service turnkey steel contractor services	Tad Rasmussen
S&S Steel Fabrication 2292 W. 500 N. Hurricane	435-635-9801 435-635-9804 sssteelfab.com	\$12.5 million \$1 million		Transformers Ride for Universal Studios in Singapore and Universal City California, Intrepid Potash Expansion in Wendover Utah	Structural steel fabrication in industrial markets and complex/ unique structures	Structural/Platwork/ Misc	E.M. (Mike) Staples
Sanpete Steel 685 E. Main St. Moroni	435-436-8310 435-436-8340 sanpetesteel.com	\$8 million \$2 million		Herriman Middle School	Structural steel beam framing	Detailing, erection, design-build	Jeff Richards
MetalForce, Inc 5037 S. 2700 W. Roy	801-776-5700 801-776-5800 metalforceinc.com	\$2 million \$27,000		Shale Bins, Bridge Railings, Skids	Frames, bins, structural fabrication tanks, mezzanine	Fabrication	DND
Blue Star Steel 3692 W. 500 S. Salt Lake City	801-908-8302 801-908-8307 bluestarsteel.com	DND DND		Dinosaur National Monument, Anadarko Skids, Utah Data Center	Structural, vessels, tanks, skids and piping	Detailing, fabrication, design-build on skids	Jeff Wright
Rocky Mountain Fabrication 1125 W. 2300 N. Salt Lake City	801-596-2400 801-322-2702 rmf-slc.com	DND \$1.2 million		Colt Oil Hub-Epping, ND	API/AWWA/NFPA/ASME-storage tanks, spheres, silos, shacks, hoppers, ducts, alloy lining, thickeners/clarifiers, scrubbers/ absorbers, and more	Full-service plate steel construction-design, fabrication, field erection	Randy Guest

DND= Did Not Disclose N/A= Not Available
Please note that some firms chose not to respond, or failed to respond in time to our inquiries.
All rights reserved. Copyright 2012 by Enterprise Newspaper Group

Top Technology Companies in Utah

Ranked by Number of Employees

Firm Name Address	Phone Fax Web	# of Employees # of Offices in Utah	% of Business within Utah % of Business outside of Utah	Revenue for 2011 Industry Type	Services Offered	Owner/Managing Principal Year Established
LANDesk Software 698 W. 10000 S. South Jordan	801-208-1500 DND landesk.com	700 2	10% 90%	\$150 million Technology	Management, security and service provisioning software of mid to large enterprise IT organizations.	Thomas Bravo 1991
Spillman Technologies 4625 Lake Park Blvd Salt Lake City	800-860-8026 801-902-1210 spillman.com	239 1	10% 90%	DND Public Safety Software	Spillman provides comprehensive public safety software for police departments, sheriff's offices, communications centers, fire departments, and correctional facilities nationwide. We specialize in integrated CAD, RMS, mobile data & field reporting, mapping & GIS, crime analysis & CompStat, JMS, Fire, data sharing, and personnel & resources software.	Lance Clark 1982
ClearOne 5225 Wiley Post Way Salt Lake City	801-975-7200 801-977-0087 clearone.com	159 1	99% 1%	\$46.06 million Audio and Visual Communications	ClearOne is a global company that designs, develops and sells conferencing, collaboration, streaming and digital signage solutions for audio, video and data multimedia communications. The performance and simplicity of its advanced comprehensive solutions enhance the quality of life. ClearOne products are designed for business and residential use, offering unprecedented levels of functionality, reliability and scalability.	Zee Hakimoglu 1983
Mindshare Technologies 310 E. 4500 S. Ste 450 Salt Lake City	801-885-3696 DND mshare.net	100 1	1% 99%	\$18.94 million Enterprise Feedback Management (EFM)	Using Mindshare, companies improve operational excellence, build customer loyalty, and support employee retention. Our industry experts guide clients in building comprehensive enterprise feedback management (EFM) solutions. Mindshare's proprietary survey technology captures the voice of the customer in real-time, immediately transforming it into actionable intelligence through powerful and incisive reporting.	John Sperry 2002
Allegiance 10235 South Jordan Gateway, 5th Floor South Jordan	801-617-8000 801-302-9043 allegiance.com	85 1	5% 95%	DND Saas, Service, Voice of Customer	Enterprise Saas platform. Allegiance helps companies translate customer insights into actionable business intelligence.	Adam Edmunds 2005
Squire & Company, PC 1329 S. 800 E. Salt Lake City	801-225-6900 801-226-7739 squire.com	68 1	95% 5%	\$12.1 million Accounting/ Financial Services/ Technology	Quickbooks ProAdvisor Program, accounting software support, audit, tax, business advisory, payroll, wealth management	K. Tim Larsen 1973
Parvus Corporation 3222 Washington St. Salt Lake City	801-483-1533 801-483-1523 parvus.com	60 1	12% 88%	DND Electronics Manufacturing/ Aerospace/ Defense	Rugged computing and IP networking subsystems for military, aerospace, and homeland defense applications. Parvus' modular tactical mission processors, network routers, and Ethernet switches provide highly reliable command, control, computing, communication, intelligence, surveillance and reconnaissance (C4) capabilities for situational awareness and mobile data processing in aircraft, ground vehicle, and shipboard installations.	Dusty Kramer 1983
FatPipe Networks 4455 S. 700 E. Salt Lake City	801-281-3434 801-281-0317 fatpipeinc.com	54 1	1% 99%	DND WAN solutions	Wide Area Network (WAN), redundancy, reliability, security and optimization solutions	Ragula Bhaskar Sanchaita Datta 1989
Autonomous Solutions, Inc. 990 N. 8000 W. Petersboro	435-755-2980 435-752-0541 autonomous solutions.com	42 1	0% 100%	\$3.7 million Robotics	Design and manufacture robotic systems for over 60 vehicle platforms ranging from small under vehicle surveillance robots up through 100 ton mining trucks. Specialize in multi-vehicle command and control, mission/path planning, sensor fusion, and dynamic obstacle detection and avoidance	Met Torrie 2000
Proactive Network Management Core 124 S. 400 E. Salt Lake City	801-355-1099 801-355-1566 pnmc.com	DND DND	DND DND	DND Information Technology	Consulting services and associated hardware and software	John Dunn 1991

DND= Did Not Disclose N/A= Not Available
Please note that some firms chose not to respond, or failed to respond in time to our inquiries.
All rights reserved. Copyright 2012 by Enterprise Newspaper Group



SME STEEL

CELEBRATING 20 YEARS OF EXCELLENCE

BY ANDREW HALEY
The Enterprise

Across the West, state of the art buildings are going up, despite the slowdown. There have been hard times. But we are coming through them. And a whole crop of buildings is going up. They span all fields of life. A futuristic library in San Diego. A brand-new, quakeproof stadium for the San Francisco 49ers. A massive shopping center that has revitalized the heart of Salt Lake City. Behind the glare of the lights and the weightless illusion of windows and walls that flow like water over a pebbled beach, lies a unique steel skeleton fabricated and erected with the unmatched expertise of the country's leading steel expert: **SME STEEL**.



For twenty years, **SME** has led the West in steel fabrication and erection. They build the buildings you've been in. In Las Vegas, **SME Steel** lies at the heart of the stunning CityCenter, the largest privately financed development in the United States. **SME** steel tops the 1,149-foot Statosphere, the tallest observation tower in the country. Those are just the record holders. The Bellagio, The Mirage, Treasure Island, Planet Hollywood, MGM, Caesars Palace, Golden Nugget, Sunset Station, Green Valley Ranch, Treasure Island, and many Circe de Soleil theaters round out the list.



Bay Area sports fans love their work without even knowing it. Baseball fans packed the 43,000-seat AT&T Stadium to cheer the Giants all the way to the 2010 World Series Championship. As sad as some fans were to leave Candlestick, it was time for a move, and the new ballpark is widely considered to be one of the best in Major League Baseball. **SME** is proud to have built it. Nearby, San Jose Sharks fans know their work well. They built the HP Pavilion, lovingly called the Shark Tank by San Jose hockey fans who cheered their team to four consecutive Pacific Division NHL championships. Next up: the new home of the San Francisco 49ers. They are hard at work fabricating the bones of what will be the gorgeous new stadium in Santa Clara, the first NFL stadium in the country to feature earthquake-resistant **CoreBrace** technology. The 49ers Stadium project is more than dollars and cents for them. **SME** workers are proud to have a hand in constructing such a historic building.



Here in Utah, **SME** has fabricated and erected some of the most notable developments of the past two decades. The new Salt Palace and the Grand America Hotel are **SME** projects. So too is the pedestrian sky bridge at City Creek. It may look easy, but assembling the 320,000-pound bridge in the heart of downtown Salt Lake City, over Main Street and TRAX light rail



lines, was no walk in the park. It was such a complex and difficult project that National Geographic featured it on their program, "World's Toughest Fixes." But **SME**'s work is not all hotels and shopping malls. **SME** structural steel and **CoreBrace** technology are built into the new IMC Hospital in Murray, helping to guarantee that crucial services remain functioning in the event of a catastrophe.

The steel fabrication and erection business is a lot more complicated than it looks. True, workers balance on beams hundreds of feet in the air like those ironworkers from the old days you see in black and white photos but with the added security of modern safety equipment. The look on their faces while they cut beams with plasma torches in the massive West Jordan plant seems more like a happy child with a set of tinker toys than a man on the job. The cadre of business and engineering experts stand behind everything they do. They provide the invaluable computer savvy, administrative expertise, and business acumen that keep them humming—some fixes cannot be solved with sweat alone.

Early one morning, in August 2008, **SME** got word that all fabrication and erection work was being halted on an ongoing \$250 million casino project in Las Vegas called Echelon. The project's backers had pulled out. **SME** was only 35 percent complete. It was one of those rare white-knuckle challenges that so

often tailspin into bankruptcy and costly litigation, and can drive multi-million dollar companies out of business. The **SME** team quickly convened to problem solve and to look for a solution outside the box. **SME** took its proposals to the owners and came up with a brilliant plan that satisfied the needs of the owners while allowing **SME** to collect payment on the 35 percent already complete and to keep the backlog for the future. It was harrowing, but their team got through it with calmness and professionalism.

SME exercises professionalism constantly. They may not face crises on the scale of the Echelon project every day, but their entire business is built on managing chaos. The thousands of beams that form the skeleton of the buildings they erect may look the same, but more often than not, every piece is unique. And heavy. When you are erecting a building like the CityCenter, with 78,000 tons of structural steel reaching 61-stories high over 18 million square feet on a construction site 67-acres large, timing is everything. Every piece of those 78,000 tons is logged in computers and tracked from space. When it arrives, it must arrive at the right place at the right time, error free, or the entire project jams up with costly delays. More than anything, their success has grown from the quiet professionalism of their employees, which allows them to under-promise and over-deliver.

Let the facts speak for themselves. Since its founding twenty years ago, **SME** has expanded from a 200-employee company with \$23 million a year in revenues into a company that, in its peak pre-recession year, brought in \$450 million in revenue and employed 1,500. Things are coming back. 2012 revenues are project to top \$200 million. Despite the recession, they have over 800 workers, across four divisions, operating out of more than 400,000 square feet of fabrication facilities in Utah, Idaho, Arizona, and Nevada. They can produce literally anything made out of metal, from structural steel and Buckling Restrained Braces to ornamental metals, handrails, stairs, and metal decking. Their business took a hit along with everyone else's. But they survived with minimal layoffs. Instead, they streamlined and kept all facilities up and running. On paper, **SME Steel** may look like the competition, but nothing compares to their dedicated workforce. Worker morale is one of their highest priorities, which is why they have the best employees and lowest turnover in the industry. In the end, their hard work and professionalism made them into the industry leader they are today.

In the words of Wayne Searle, CEO, "The equipment's the same, the steel is the same, the difference is the people."



Top Sustainable Design Firms in Utah

Ranked by Amount of Projects in Design, Construction, or Pending LEED Certification

Company Name Address	Phone Fax Web	Amount (\$) of projects in design, construction, or pending LEED certification	Total construction value (\$) of LEED certified projects completed in 2011	Number of projects in design, construction, or pending LEED certification	Total sq. ft. of LEED certified projects completed	# of LEED accredited professionals	Noteworthy sustainable design projects
Architectural Nexus 2505 Parley's Way Salt Lake City	801-924-5000 801-924-5001 archnexus.com	\$1.47 billion	\$86.6 million	20	299,900 2.89 million	42 10	LDS Church prototypical sustainable design meetinghouses
GSBS Architects, PC 375 W. 200 S. Ste. 100 Salt Lake City	801-521-8600 801-521-7913 gsbsarchitects.com	\$408 million	\$29 million	22	1.01 million 1.66 million	38 13	Hillside Middle School, Salt Lake City Public Safety Building, Net-Zero Essential Facility
VCBO Architecture 524 S. 600 E. Salt Lake City	801-575-8800 801-531-9850 vcbo.com	\$277.2 million	\$84.8 million	10	1.64 million 1.08 million	12 10	Westminster College Meldrum Science Center, Portico at Meridian Medical Office Tower, Intermountain Health Care Salt Lake Clinic, University of Utah Date Center
FFKR Architects 730 Pacific Ave. Salt Lake City	801-521-6186 801-539-1916 ffkr.com	\$266.5 million	DND	7	440,671 2.29 million	15 6	Daybreak Corporate Center, Bogue Building, Deseret Building
CRSA 649 E. South Temple Salt Lake City	801-355-5915 801-355-9885 crsa-us.com	\$174.7 million	\$36.47 million	6	608,903 394,010	8 10	Swaner EcoCenter, University of Utah Sutton Geology and Geophysics Building, Utah State University Bingham Entrepreneurship & Energy Research Center
EDA Architects, Inc 9 Exchange Place Ste. 1100 Salt Lake City	801-561-7600 801-363-3149 edaarch.com	\$155.7 million	DND	8	452,687 573,000	5 4	Questar Office Building, U of U Beverley Taylor Sorenson Arts and Education Complex, U of U Skaggs Pharmacy Research Building, Salt Palace Expansions Center, EDA Office, John W. Gallivan Center Remodel and Addition, Ogden Nature Center, J.L. Sorenson Recreation Center
AJC Architects 703 E. 1700 S. Salt Lake City	801-466-8818 801-466-4411 ajcarchitects.com	\$112.5 million	\$55 million	15	132,000 485,000	7 9	Utah Syate University USTAR Building, Utah State University, Wetlands Discovery Point, The Children's Center
Pasker Gould Ames & Weaver, Inc. 5263 S. Commerce Dr. Salt Lake City	801-266-4669 801-262-6122 DND	\$48 million	\$4.77 million	3	33,152 284,312	1 1	River's Edge School, Utah Career Center
Dave Robinson Architects 6465 S. 3000 E. Ste. 102 Salt Lake City	801-272-0242 801-272-0269 daverobinsonarchitects.com	\$30 million	\$8 million	1	52,000 306,000	1 1	Northrop Grumman Addition Salt Lake City Intermountain Healthcare IMAT

DND= Did Not Disclose N/A= Not Available
Please note that some firms chose not to respond, or failed to respond in time to our inquiries.
All rights reserved. Copyright 2012 by Enterprise Newspaper Group



**BUSINESS LENDING
IS OUR BUSINESS**
SBA Loans • 504 • Commercial Mortgage • LOC

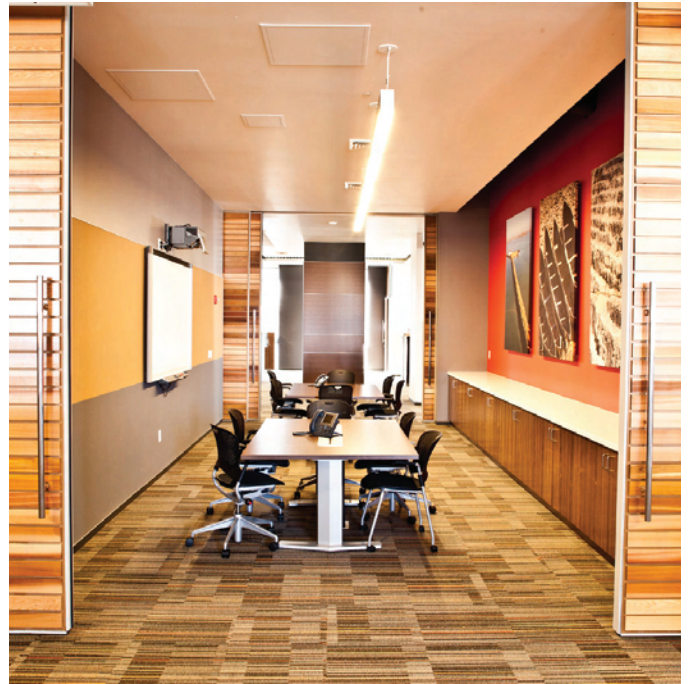


BANK of UTAH

711 S. State St.
Salt Lake City, UT 84111

(801) 532-7111

Equal Housing Lender Member FDIC



2006-2012

COMMERCIAL
K-12 EDUCATION
HIGHER EDUCATION
GOVERNMENT
HEALTHCARE
CULTURAL

VISION MADE REAL

Clients come to MHTN with an idea or a vision of their project. They have goals and desires that they want to accomplish. Through a collaborative design process, we apply our experience and expertise to develop innovative design solutions that work for our clients, the environment and the people who use the buildings. We discover our client's vision and make it real.



MHTN
ARCHITECTS

801.595.6700 | www.mhtn.com

Top Trucking Firms in Utah

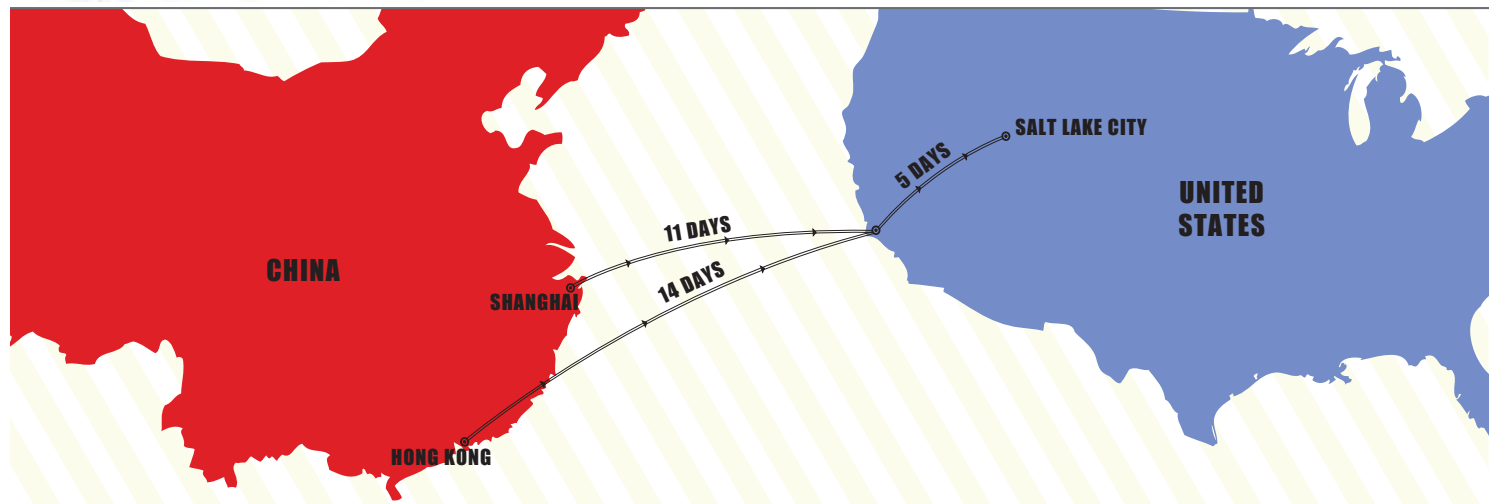
Ranked by Number of Power Units in 2011

Company Name Address	Phone Fax Web	# of Power Units in 2011		Full Load Carriers	Annual Miles	Owner/Managing Principal
		Gross Sales in Utah in 2011	# of Flat Beds # of Dry Vans			
C.R. England, Inc. 4701 W. 2100 S. Salt Lake City	801-972-2712 801-974-3800 crengland.com	4,331 \$1.1 billion	0 834	Yes Yes	531 million 1,729	Dan England Dean England Wayne Cederholm Chad England
Pride Transport, Inc. 5499 W. 2455 S. Salt Lake City	801-972-8890 801-972-1450 pridetransport.com	398 \$103 million	0 153	Yes Yes	\$45.4 million 507	D. Jeffrey England Jay England
LW Miller Companies 1050 W. 200 N. Logan	435-753-8350 435-750-6022 lwmliller.com	220 \$88.7 million	0 0	Yes No	\$20 million 377	Larry W. Miller
Parke Cox Trucking Co., Inc 4250 S. River Road St. George	435-628-0886 435-628-9324 coxtrucking.com	65 \$11.75 million	16 100	Yes Yes	\$6.6 million 82	Parke Cox
Geodyne Transport 1235 S. 3200 W. Salt Lake City	801-575-1110 801-575-1101 geodyne.net	29 DND	0 0	Yes No	\$2.6 million 32	Judd Kemp
DST Distributors, Inc. 444 W. Spring Creek Place Springville	801-491-3781 801-491-6989 dstdistributorsinc.com	25 \$ 8.3 million	0 400	Yes Yes	DND DND	D. Scott Tollestrup

DND= Did Not Disclose N/A= Not Available
Please note that some firms chose not to respond, or failed to respond in time to our inquiries.
All rights reserved. Copyright 2012 by Enterprise Newspaper Group



China-Salt Lake City Express Service



Servicing All Destinations Worldwide

Contact Direct:

Scott Ogden
801-303-1001

Larry Stewart
801-303-1004

Origin	CFS Cutoff	Departs	Arrives Long Beach	Arrives Salt Lake City	Available for Pick-up or delivery	Ocean Inland Combined Transit
Shanghai Hong Kong	Sunday Wednesday	Thursday Monday	Sunday Sunday	Friday Friday	Friday/Monday Friday/Monday	15-18 Days 19-21 Days

- * Speed plus reliability
- * Better inventory control
- * Reduce need for costly air freight
(subject to Peak Season Surcharge and general rate increases)
- * 36 years experience locally owned and operated
- * Shorter transit times
- * Simple competitive pricing
- * One point of contact

More than just trucking.



C.R. England is a Global Transportation Solutions Provider

- Career.** We create careers, not just jobs.
- Opportunity.** We offer all types of transportation solutions including land, sea, and air.
- Upward.** Our direction is towards growth.
- Respect.** We've built respect within the industry by earning it.
- Service.** Our people know that service and success are one in the same.
- Expectations.** We support high expectations and standards.

At C.R. England, these guiding principles have helped our people reach fulfilling careers and helped our company enjoy perennial success. Check us out at crengland.com.

England
DRIVE LIFE

Top Accounting Firms in Utah

Ranked by Number of Certified Public Accountants

Firm Name Address	Phone Fax Web	# of CPAs Partners	# of Non- Certified Accountants Employees	# of Locations Year Established	% of Revenue from: Auditing/ Accounting, Tax, Management Advisory, Other	Alliances: State, Regional, National, International	Specialties/ Major Areas of Practice	Managing Partner
Ernst & Young LLP 178 S. Rio Grande St, Ste. 400 Salt Lake City	801-350-3300 801-350-3459 ey.com	111 8	DND 152,000	DND 1948	DND DND DND DND	Yes Yes Yes Yes	Ernst and Young is a global leader in assurance, tax, transaction and advisory services	David Jolley
Tanner LLC 36 S. State St, Ste. 600 Salt Lake City	801-532-7444 801-532-4911 tannerco.com	48 9	20 76	1 1940	70% 26% 4% 0%	Yes Yes Yes Yes	Employee benefit plans, public companies, manufacturing, retail, technology	Jeffery G. Bickel
Wisam Smith Racker & Prescott, LLP 155 N. 400 W., Ste. 400 Salt Lake City	801-328-2011 801-328-2015 wsrp.com	40 7	13 61	2 1985	48% 42% 2% 8%	No No No Yes	Audit industry specialization: construction, manufacturing, distribution, technology, governmental, benefit plans; sophisticated tax planning and return preparation; business valuation services	Bruce R. Wisan
Hansen Barnett & Maxwell, P.C. 5 Triad Center, Ste. 750 Salt Lake City	801-532-2200 801-532-7944 hbmcpas.com	30 6	12 48	1 1965	78% 20% 1% 1%	Yes Yes Yes Yes	Audits (registered with the PCAOB), reviews and compilations, tax preparation and small business accounting, payroll	Robert Bowen
Larson & Rosenberger, LLP 9065 S. 1300 E. Sandy	801-313-1900 801-313-1912 larsco.com	23 9	22 54	4 1993	54% 39% 6% 1%	Yes Yes Yes Yes	Insurance audit and tax, SEC audit and tax, government audit, middle and emerging market audit	Dennis Larson
CBIZ MHM, LLC 175 S. West Temple Salt Lake City	801-364-9300 801-364-9301 cbiz.com	22 7	4 36	1 1986	46% 46% 2% 6%	No Yes Yes Yes	Automobile dealers, nor-for-profit, technology construction, real estate, manufacturing and distribution, professional services	Clair Rood
Schmitt Griffiths Smith & Co. 5929 S. Fashion Pointe Dr. Ste 300 Ogden	801-621-1575 801-627-2911 sgscpa.com	19 6	17 48	2 1974	15.5% 44% 40.5% 0%	Yes Yes Yes No	Auditing and attestation, tax planning and compliance, accounting and consulting and technology software	Stuart Tholen
HJ Associates, LLC 50 W. Broadway, Ste 600 Salt Lake City	801-328-4408 801-328-4461 hjcpafirm.com	17 5	6 26	1 2000	69% 25% 6% 0%	No No Yes Yes	Assurance and tax services	Robert Jensen
Huber Erickson & Bowman, LLC 375 S. 300 W. Salt Lake City	801-328-5000 801-328-5009 hebsolutions.com	15 4	23 38	2 1975	40% 50% 5% 5%	No No No No	Tax, audit, small business, consulting and litigation services, financial planning and 401K administration	Chesley Erickson
Mantyla McReynolds, LLC 178 S. Rio Grande St, Ste. 200 Salt Lake City	801-269-1818 801-266-3481 mmacpa.com	14 7	9 28	1 1989	55.38% 29.51% 15.11% 0%	Yes Yes Yes Yes	PCAOB registrant, mergers and acquisitions, forensic/fraud investigations, tax planning and preparation, entity structuring, business valuations	Kim G. McReynolds
Cook Martin Poulson, P.C. 632 N. Main St. Logan	435-750-5566 435-787-4321 cookmartin.com	11 5	10 30	3 1977	32% 60% 5% 3%	Yes No Yes No	Book keeping/payroll services, business consulting, business valuations, CFO outsourced solutions, cost segregation, estate/succession planning, financial statements audits and reviews, proactive income tax services, retirement plan design and administration	Richard K. Poulson
Pinnock Robbins Posey & Richins 136 E. South Temple, Ste. 2250 Salt Lake City	801-533-0409 801-533-0414 cpaandmore.com	11 5	4 16	1 1944	20% 80% 0% 0%	No No No No	Tax planning and compliance, assurance and auditing, business accounting and consulting, financial and estate planning	David T. Posey
Teuscher Ruf & Walpole, LLC 11650 S. State St, Ste. 200 Draper	801-619-1400 866-589-8871 trwllc.com	10 DND	DND 22	DND 1993	DND	DND	Construction, oil and gas, real estate, high net worth individuals, amusement, professional athletes	Harold B. Ruf

DND= Did Not Disclose N/A= Not Available
Please note that some firms chose not to respond, or failed to respond in time to our inquiries.
All rights reserved. Copyright 2012 by Enterprise Newspaper Group



Is Your Accountant a CPA?

The CPA credential is critical in the business and financial world. CPAs are recognized for their integrity, competency and objectivity.

To earn a CPA status, candidates complete required accounting college courses including an advanced degree, one year of real-world experience and follow that up with a rigorous two-day exam to test their business, auditing and general accounting skills. Prior to licensure, they must also pass an ethics exam as well as the Utah Law & Rules Exam. CPAs maintain their credentials by completing 80 hours of

continuing professional education every two years and must abide by a strict code of conduct and perform within the high standards that come with the title.

The Utah Association of CPAs supports and challenges members through advocacy, professional education, leadership development, networking and community service to help them succeed in a competitive and changing world.

To find a CPA, visit uacpa.org and search under "CPA Referral Program."

Hire a CPA for

- Tax Expertise
- Business Advising
- Financial Planning
- General Accounting
- Overseeing Processes and Procedures (Controller)
- Investments Advising
- Real Estate Planning
- CFO (Chief Financial Officer)

Top Banks in Utah

Ranked by Amount of Utah Assets as of 12/31/2011

Bank Name Address	Phone Fax Web	Utah Assets as of 12/31/2012	Utah Deposits as of 12/31/2012	Out of State Assets Out of State Deposits	# of Utah Branches # of Utah Employees	Year Established Type of Charter	Top Local Executive
Zions Bank 1 S. Main St. Salt Lake City	801-974-8800 DND zionsbank.com	\$16.1 billion	\$12.11 billion	\$1.43 billion \$2.8 billion	133 DND	1873 National	Scott Anderson
Bank of American Fork 33 E. Main St. American Fork	800-815-BANK 801-763-6664 bankaf.com	\$889.9 million	\$779.8 million	DND DND	12 285	1913 State	Richard T. Beard
TAB Bank 4185 S. Harrison Blvd. Ogden	801-624-4800 801-395-8096 tabbank.com	\$852.5 million	\$714.5 million	DND DND	1 237	DND Industrial	Trevor Morris
Bank of Utah 2605 Washington Blvd. Ogden	801-409-5000 801-409-5151 bankofutah.com	\$745.8 million	\$600.9 million	DND DND	13 299	1953 State	Doug DeFries
Central Bank 75 N. University Ave. Provo	801-375-1000 801-818-0352 cbutah.com	\$662.8 million	\$508.4 million	DND DND	10 180	1891 State	Matt C. Packard
AmericanWest Bank 10757 S. River Front Pkwy. Ste. 150 South Jordan	801-208-4090 DND awbank.net	\$314.7 million	\$314.5 million	\$1.984 billion \$1.587 billion	17 123	1974 FDIC/Federal	Mark Howell
First Utah Bank 3826 S. 2300 E. Salt Lake City	801-272-9454 801-272-9458 firstutahbank.com	\$247.86 million	\$207.15 million	\$5.5 million \$8.06 million	8 115	1978 State	David L. Brown
Brighton Bank 93 W. 3300 S. Salt Lake City	801-467-5411 801-467-5429 brightonbank.com	\$152.2 million	\$123.5 million	DND DND	5 63	1978 State	Robert Bowen
Continental Bank 15 W. South Temple Ste. 420 Salt Lake City	801-595-7000 801-595-7053 cbankus.com	\$113.7 million	\$84 million	DND DND	1 13	2003 State	Nathan Morgan
JPMorgan Chase 201 S. Main St Salt Lake City	801-715-9204 801-715-7403 chase.com	DND	\$11.7 billion	\$29.73 million \$360.74 million	69 900+	1799 Federal	Craig Zollinger
KeyBank, N.A. 36 S. State St. Salt Lake City	801-297-5900 801-297-5710 key.com	DND	\$1.8 billion	\$88.7 billion \$61.9 billion	39 300	1825 National	Jill Taylor
U.S. Bank 170 S. Main St. Salt Lake City	DND 801-534-6008 usbank.com	DND	\$1.1 billion	\$341 billion \$234 billion	69 560	1896 National	Damon G. Miller
Washington Federal Inc. 505 E. 200 S. Salt Lake City	801-366-2265 801-533-9271 washingtonfederal.com	DND	DND	\$13.6 billion \$8.9 billion	10 45	1917 Federal	DND
Wells Fargo 299 S. Main St. Salt Lake City	801-246-5328 DND wellsfargo.com	DND	DND	\$1.3 trillion \$872.6 billion	126 4,000+	1852 National	Greg Winegardner

DND= Did Not Disclose N/A= Not Available
Please note that some firms chose not to respond, or failed to respond in time to our inquiries.
All rights reserved. Copyright 2012 by Enterprise Newspaper Group

WE MEAN BUSINESS

825 North 300 West, Suite C309 • Salt Lake City, Utah 84103
Phone: (801) 533-0556 • FAX: (801) 533-0684
www.slenterprise.com



UTAH'S BUSINESS JOURNAL

Need Your Small Business to Fly?

Flight Instructions Available at Bank of Utah.

Fawn Robinson
Gary's Banker

Gary Nielsen
iFly at the Salomon Center
Ogden, UT

 Equal Housing Lender | Member FDIC



BANK of UTAH
Experience. Service.

Call 801-409-5055 or
1-800-516-5559

- ▶ SBA Preferred Lender
- ▶ 7A & 504 Loans
- ▶ Conventional Small Business Loans
- ▶ Personalized Business Banking Solutions


Top Credit Unions in Utah

Ranked by Amount of Utah Assets as of 12/31/2011

Credit Union Name Address	Phone Fax Web	Utah Assets as of 12/31/2012	Utah Deposits as of 12/31/2012	Out of State Assets	# of Utah Branches	# of Utah Employees	Top Local Executive
				Out of State Deposits	# of Members	Type of Charter	
America First Credit Union 1344 W. 4675 S. Riverdale	1-800-999-3961 DND americafirst.com	\$4.72 billion	\$4.04 billion	\$383.36 million \$563.67 million	98 579,620	1,915 Federal	DND
Mountain America Credit Union 7181 S. Campus View Dr. West Jordan	801-325-6228 801-325-6328 macu.com	\$2.6 billion	\$2.56 billion	\$368.1 million \$135.3 million	58 381,000	1,040 Federal	Sterling W. Nielsen
Utah Community Credit Union 188 W. Riverpark Dr. Provo	801-223-8228 801-223-7776 uccu.com	\$757.98 million	\$671.75 million	DND DND	18 109,458	300 Federal	Jeff Sermon
University Federal Credit Union 3450 Highland Dr. Salt Lake City	801-481-8800 801-481-8877 ucreditu.com	\$587.47 million	\$496.38 million	DND \$34.47 million	15 78,243	197 Community	DND
Cyprus Credit Union 3876 Center View Way West Jordan	801-260-7600 801-260-7611 cypruscu.com	\$561.18 million	\$561.18 million	DND DND	16 71,724	263 Federal	Todd Adamson
Deseret First Credit Union 2480 S. 3850 W. Ste. C Salt Lake City	801-456-7000 DND dfcu.com	\$420 million	DND	DND DND	10 53,000	150 Federal	Shane London
Granite Credit Union 3675 S. 900 E. Salt Lake City	801-288-3000 801-288-3051 granite.org	\$330.3 million	\$299.84 million	DND DND	8 30,447	93 Federal	Lynn R. Kuehne
Utah First Federal Credit Union 200 E. Sout Temple Salt Lake City	800-234-0729 801-320-2660 utahfirst.com	\$238.84 million	\$216.57 million	DND DND	8 21,894	69 Federal	Darin B. Moody
Jordan Credit Union 9260 S. 300 E. Salt Lake City	801-566-4195 801-567-3333 jordan-cu.org	\$206 million	\$189 million	DND DND	7 25,600	70 Federal	Lindsey Merritt
Transwest Credit Union 37 W. 1700 S Salt Lake City	801-487-1692 801-924-7561 transwestcu.com	\$108.2 million	\$101.6 million	DND DND	4 12,976	34 State	DND
Weber State Credit Union 4140 Harrison Blvd Ogden	801-399-9728 801-866-1051 weberstatecu.com	\$86.5 million	\$78.6 million	DND DND	4 9,477	37 Federal	Vickie van der Have

DND= Did Not Disclose N/A= Not Available
Please note that some firms chose not to respond, or failed to respond in time to our inquiries.
All rights reserved. Copyright 2012 by Enterprise Newspaper Group

Don't be left out



BOOK of LISTS 2013

Have your business
included in next year's
Book of List.

For more information contact
Ann Johnson
801-533-0556 ex. 207
ann@senterprise.com

Grow Your Business

with **Growth Checking** from Mountain America

- ▶ **FREE** Employee Direct Deposit
- ▶ **FREE** Online Business Banking
- ▶ **FREE** Bill Pay
- ▶ Merchant Services
- ▶ Payroll Services
- ▶ Remote Deposit and Full ACH Debit and Credit Processing
- ▶ Business Debit and Credit Cards

Open your **Growth Checking** Account today!

Looking for additional guidance?
We can come to you.
Schedule a free, in-depth and
personal consultation with a
Mountain America
Business Account
Executive.
Call today.



MOUNTAIN AMERICA
CREDIT UNION

1-888-845-1850 | business.macu.com

Loans subject to credit approval. Federally insured by NCUA up to \$250,000.



Top SBA Lenders in Utah

Ranked by Amount of Loans Approved in 2011

Company Name Address	Phone Fax Web	Amount of SBA Loans Warehoused in 2011		Loan Range	Type of Lender	SBA Officer
		Amount of Loans Approved in 2011	# of SBA Loans Warehoused in 2011			
Mountain West Small Business Finance 2595 E. 3300 S. Salt Lake City	801-474-3232 801-493-0111 mwsbf.com	\$97.4 million 200	\$566.3 million 1670	\$250,000 to \$10 million	SBA 504 Certified Development Company	Scott Davis
Zions Bank One S. Main Salt Lake City	801-844-7909 801-844-8626 zionsbank.com	\$77.3 million 555	\$718.3 million 6882	\$10,000 to \$2 million	Preferred Lender	Cece Mitchell
Utah Certified Development Company 5333 S. Adams Ave. Suite B Ogden	801-627-1333 801-627-6687 utahcdc.com	\$38.5 million 64	\$200 million 890	\$50,000 to \$5 million	SBA 504-CDC	Rob Richards
Mountain America Credit Union West Jordan	801-325-6440 DND macu.com	\$35 million 129	\$35 million 129	\$10,000 to \$5 million	PLP, 7a, 504, Express	David Doria
Wells Fargo 299 S. Main St. Salt Lake City	801-246-1616 866-670-4584 wellsfargo.com	\$19 million 56	DND DND	DND	Financial Services Company	James M. Hilton Ryan Furstenau
Cyprus Credit Union 3876 W. Center View Way West Jordan	801-260-7600 801-260-7630 cypruscu.com	\$16.9 million 11	\$1.65 million 10	\$5,000 to \$2.9 million	Credit Union	Paul Turner
U.S. Bank 448 E. 6400 S. Salt Lake City	800-431-7101 602-222-4580 usbank.com/sba	\$15.6 million 31	DND DND	\$350,000 to \$12.5 million	SBA, PLP Lender	Michele Sauk Kevin Corless
Bank of American Fork 195 E. 6100 S. Murray	801-838-9871 801-838-9898 bankaf.com	\$8 million 32	\$20.2 million 92	\$25,000 to \$5 million	Preferred Lender	Richard L. Gray
State Bank of Southern Utah 377 N. Main St Cedar City	435-865-2300 435-865-2230 sbsu.com	\$7.9 million 42	\$64.3 million 217	\$7,000 to \$8 million	504, 7a, SBA Express, Export Express, Patriot Express	Clint Penrod
First National Bank of Layton 207 S. Main St Bountiful	801-292-3900 801-299-1055 fnbutah.com	\$7.7 million 7	\$7.7 million 7	up to \$5 million	SBA Preferred	Clark Irwin
Central Bank 75 N. University Ave. Provo	801-655-2152 801-375-1007 cbutah.com	\$6.5 million 41	DND DND	up to \$5 million	7a, all Express Loans	Deborah Lamb Kent Johnson
Bank of Utah 2605 Washington Blvd. Ogden	801-409-5057 801-781-2747 bankofutah.com	\$6 million 8	0 0	\$100,000 to \$5 million	PLP	Rachel Phillips
Goldenwest Federal Credit Union 5025 S. Adams Ave. Ogden	801-337-8342 801-337-8379 gwcuc.org	\$5.1 million 11	\$21.4 million 132	\$5,000 to \$6 million	Credit Union	Brian Hoxer Eric Woltavis Paul Callan David Beckett
First Utah Bank 3826 S. 2300 E. Salt Lake City	801-272-9454 801-272-9458 firstutahbank.com	\$4 million 11	\$3.7 million 11	\$25,300 to \$1.8 million	PLP, Express, Patriot, 504	Scott Snow
America First Credit Union 4646 S. 1500 W. Riverdale	801-827-8216 801-827-8625 americafirst.com	\$1.6 million 60	\$13 million 410	DND	PLP, CLP, Express, Patriot Express	Ilene Dickamore

DND= Did Not Disclose N/A= Not Available
Please note that some firms chose not to respond, or failed to respond in time to our inquiries.
All rights reserved. Copyright 2012 by Enterprise Newspaper Group

SUCCESS HAS A NUMBER

Turns out for hundreds of Utah businesses like these, that number is 504 — as in SBA 504 loans from Utah's #1 small business lender, **Mountain West Small Business Finance**. SBA 504 loans offer you a low monthly payment, a low fixed interest rate and require only 10% down.

Use your SBA 504 loan to:

- Purchase land and/or a building
- Construct a new facility
- Purchase equipment
- Renovate or remodel existing facilities

EXCITING NEWS

Mountain West Small Business Finance now offers **SBA Community Advantage Loans** for operating capital to small businesses.

Contact us today to see how these flexible loans can be the best investment your company ever makes!



GROWING SMALL BUSINESSES, JOBS, COMMUNITIES

Utah's #1 Small Business Lender

801.474.3232 | mwsbf.com

504



See more Utah small business success stories at mwsbf.com

UTAH *Legacy* BUSINESS BIOGRAPHY



Bank of Utah credits 60 years in business to keeping things fresh

As companies rise and fall faster than ever, we're continually reminded of the truth of the adage "the only constant is change." In business, lasting success is not a secret recipe, but an ability to keep coming up with new recipes.

In this respect, Ogden, Utah-headquartered Bank of Utah seems to have a leg up. Going strong after six decades of business, the locally owned community bank has proven adaptable through every kind of challenge: evolving customer needs, a market in flux, an ever more challenging regulatory environment, and a recession that brought down scores of banks, big and small.

Many people assume that community banks are behind the times when

it comes to banking practices. Or that, at best, they just aim to keep up. But when Frank Milton Browning cofounded Bank of Utah in Ogden in 1952, he proved that innovation can be one of a community bank's defining features. The bank hasn't just "rolled with the punches" over the years; its teams have actively pursued evolution.

As Bank of Utah prepares to celebrate its 60th anniversary this December, bank president Doug DeFries reflects on how the bank's nimbleness has remained an asset, allowing it to not just survive but continuously grow: "Our ability to do things differently has allowed us to stay nimble and relevant," he says. This culture of progressiveness took root early in the bank's history. On opening day, to be exact.

Rooted in "Doing Things Differently"

Before being asked to invest in the bank, Browning, a local businessman, family man and humanitarian, had no background in banking. Taking the helm as bank president, he sought to challenge the accepted model of banking of the time—to "take the chill off old-fashioned banking ideas," as an early advertisement read. Browning envisioned a completely new banking approach: relaxed, personal "relationship banking."

When the first Bank of Utah branch opened on Washington Boulevard on December 1, 1952, just a few doors down from the bank's current main branch, the lobby was cozy and inviting. There was comfortable seating, a lit fireplace and cheerful staff. Imagine walking into this, as opposed to the impersonal, exclusive environments of most banks at the time! Deposits surpassed expectations on opening day and climbed to \$4 million within three months. Soon the Bank had four branches: Ogden, South Ogden, Ben Lomond and Roy. This kind of modern banking clearly clicked.

Tapped into the needs of the community, Bank of Utah would soon become the first bank in the state to issue a credit card, called the "Cred-o-Matic Shopping Card." It was also the first Utah bank to become a "motor bank" by adding a drive-up teller window to its building.

Roughly five years into the bank's history, however, its future was at a crossroads. Some of the bank's investors wanted to cash in on their invest-

ment and sell the flourishing bank to a larger bank. But Browning didn't agree. He wanted to preserve the bank's small, nimble, community roots—to be able to stay closely connected to its customers and to continue shaking up some of the "rules" of banking. Browning bought out the other investors.

Staying Innovative Through Growth

Today, Bank of Utah has grown from 16 employees to more than 300 and \$750 million in assets. But growth, in itself, is not a barrier to innovation. The bank remains locally owned, with Frank W. Browning, grandson of the founder, as chairman. Compared to larger banks, Bank of Utah still has typical community bank features, which have allowed it to keep its adaptable way of doing business and to modernize in a way that's closely in tune with its customers.

"I think Bank of Utah remains relevant due to its ability to continue to grow and meet the expectation of our shareholders," DeFries says. "The main job is to satisfy the customer's needs."

To continue to satisfy customers' needs, in the past few years, the bank has expanded its treasury management and trust and investment teams in order to provide personalized guidance. It also renovated its Logan branch, moved its South Ogden branch to a more convenient location, opened a new mortgage branch in Sandy and centralized its Northern Utah business lending offices at one Logan location, all with the aim of providing faster response time and easy access to customer support. Additionally, in anticipation of the inevitable uptick in housing starts, the bank recently added to its mortgage staff, including a new office in St. George.

This year the bank also became the first in the state to adopt a new online Personal Financial Management platform developed by the Provo-based company MoneyDesktop. This online banking application provides the bank's business and consumer customers with more than the typical internet banking features; they have free access to tools for expense tracking, budget creation, debt management and financial reporting. Its most unique feature is an ability to aggregate all of a customer's account information from various institutions (not just Bank of Utah) into one's Bank of Utah account dashboard for a complete financial picture.



A New Culture of Accountability

How does a company stay nimble enough to meet fluctuating market demands and opportunities? DeFries says it requires a passion for the customer—which, in turn, fosters a sense of accountability among employees and close alignment across departments. “Of our cultural beliefs that we have in the bank, taking accountability is now at the top of the list,” he says. “We’re eliminating turf issues. The focus is off the employee, which can get in the way—you can’t take care of the customer’s needs if you’re overly concerned about yourself.”

One example of how this approach has paid off for the bank is in the mortgage area. In response to record-low mortgage rates, the bank had been offering a 48-hour turnaround on loan approvals to help customers lock in low rates over the past year. In June, the bank experienced an unprecedented growth in refinance loans, and upholding this tight loan approval commitment posed several challenges. “It required the involvement of many different team members,” DeFries says. “Our IT department stepped in, as did accounting and wires. Because our team was responsive to needs, people were excited about the challenge and worked together to make it happen.”

Recognizing this as a differentiator for the bank, its leaders are encouraging this attitude across all areas of the bank. When someone has a time-critical

need, or the solution to a customer’s needs crosses several departments, employees are encouraged to step out of their “role” and get involved. “Our culture is increasingly one of taking responsibility, working together, enhancing systems,” DeFries says. “Because the ownership is right here, we can react very quickly.”

Planning For Success Amid Unpredictability

Openness to innovation—combined with the flexibility to pursue it—seems to have proven, indeed, a formula for success for Bank of Utah. But will it be enough to help the bank continue to weather the rocky economy and other uncertainties? DeFries believes so.

“There are risks out there,”

DeFries says. “The economy isn’t back. With Dodd-Frank, the regulatory environment is more difficult than ever. And this low interest rate environment is going to be here for quite a while. But as a community bank we’re nimble enough to react to these challenges—to decide how to best address them and keep customers taken care of.”

Being nimble doesn’t mean flexing on principles, however. If there’s one constant in the bank’s 60-year history, it’s that bank leaders remain vigilant about making sound financial decisions. DeFries says this is vital to the long-term interest of shareholders and customers. “It’s always been all about the people—the people in the bank, the shareholders giving us the capital to work with, and our customers and communities,” he says.

In celebration of 60 years in business, the bank will organize a winter clothing drive in December to help those families in need in the community stay warm. For more information about Bank of Utah’s Warm Bodies, Warm Souls charity event, visit www.bankofutah.com.

Company Bio:

Bank of Utah has 13 full-service branches along the Wasatch Front, mortgage offices in South Towne, Price, Logan, South Jordan and St. George and corporate trust teams in Ogden and Salt Lake City. Bank of Utah offers personal banking, business banking, home lending, trust management and investment services. For more information call 1-800-516-5559 or visit www.BankOfUtah.com.





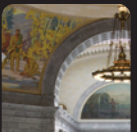




Top Commercial Insurance Agencies in Utah

Ranked by Premium Volume in Utah in 2011

Company Name Address	Phone Fax Web	Premium Volume in Utah in 2011	# of Licensed agents in Utah # of Employees	# of Offices in Utah # of Offices Worldwide	Specialties	Owner/Managing Principal Year Founded
Aon Corporation 299 S. Main St., Ste. 1300 Salt Lake City	801-488-2577 847-953-3468 aon.com	\$915 million	12 12	1 500	Property, casualty, enterprise risk management, human resource consulting, benefits brokerage	C. Dawn Brazell 1982
Marsh USA Risk & Insurance Services/ Mercer Health & Benefits 15 W. South Temple, Ste. 700 Salt Lake City	801-533-3600 801-533-3610 marsh.com/ mercerc.com	\$413.6 million	30 33	1 420	Property, casualty and health, benefits brokerage and consulting	Kim Briggs Ann Thomas 1923
Moreton & Company 709 E. South Temple Salt Lake City	801-531-1234 801-531-6117 moreton.com	\$410 million	109 175	4 7	Commercial insurance, employee benefits, surety, voluntary products, personal insurance, financial services	Earl Hurst 1910
HUB International Insurance Services, Inc. 6440 S. Wasatch Blvd., Ste. 235A Salt Lake City	801-943-2600 801-618-4014 hubinternational.com	\$336 million	10 12	2 250	Employee benefit consulting, property & casualty risk advisory/production services	Tom Lanning 1998
The Leavitt Group 216 S. 200 W. Cedar City	435-586-6553 435-586-1510 leavitt.com	\$319 million	152 570	20 105	Property, casualty, life and health	Dane O. Leavitt 1952
Wells Fargo Insurance Services USA, Inc. 1095 E. 2100 S., Ste. 200 Salt Lake City	801-246-4300 866-729-7172 wfs.wellsfargo.com	\$125 million	39 40	1 135	Enterprise risk management, captive consulting & management, cost control, employee benefits, commercial insurance, personal lines, construction, technology, and small business	David Headden 1969
The Buckner Company 6550 S. Millrock Dr., Ste. 300 Salt Lake City	801-937-6700 801-937-6710 buckner.com	\$93 million	38 121	2 4	Construction, commercial (retail, restaurants, manufacturing, etc), trucking and transportation, surety bonds, employee benefits, agriculture and crops, personal lines	Terry H. Buckner 1936
Beehive Insurance Agency Inc. 302 W. 5400 S. #101 Murray	801-685-6860 801-685-2899 beehiveinsurance.com	\$70 million	17 36	2 2	Trucking & transportation, contractors & construction, non-profits, manufacturing, and employee benefits	Doug Snow 1961
HUB International Transportation Insurance Services, Inc. PO Box 17346 Salt Lake City	801-943-2600 801-943-3889 hubtransportation.com	\$30 million	15 140	1 14	Insurance for the trucking industry	Dale Kaufman Michael Birge 1963

DND= Did Not Disclose N/A= Not Available
Please note that some firms chose not to respond, or failed to respond in time to our inquiries.
All rights reserved. Copyright 2012 by Enterprise Newspaper Group

Don't be left out

BOOK of LISTS 2013

Have your business
included in next year's
Book of List.

For more information contact
Ann Johnson
801-533-0556 ex. 207
ann@slenterprise.com

THE SKY IS NOT THE LIMIT.

WINNER
BEST OF STATE



UTAH 2012

As the largest law firm based in the Mountain West, we're used to setting our sights high. It gives us an affinity for clients with similarly lofty goals. We've developed a focus on client service that guides us from the courtroom to the boardroom — a focus that is valued along the Wasatch Front and beyond.

To learn what a difference our attitude might make for you, contact Greg Lindley at 801.799.5800;
222 South Main Street, Suite 2200, Salt Lake City, UT 84101.

Aspen
Billings
Boise

Boulder
Carson City
Cheyenne

Colorado Springs
Denver
Denver Tech Center

Jackson Hole
Las Vegas
Reno

Salt Lake City
Santa Fe
Washington, D.C.

HOLLAND & HART^{LLP}
www.hollandhart.com



Top Group Health Insurance Companies in Utah

Ranked by Number of Individuals Covered in 2011

Company Name Address	Phone Fax Web	# of Individuals Covered in 2011	# of Offices in Utah		Premium Volume in Utah in 2011	Insurance Products Offered	Top Local Executive	
			# of Utah Employees				Year Founded	
SelectHealth 5381 S. Green St. Murray	801-442-5038 DND selecthealth.org	542,000	1	975	\$1.185 billion	Medical, dental, vision, and life and disability coverage, plans for individuals, employers, federal employees, CHIP, Medicaid, and Medicare Advantage	Patricia R. Richards	DND
Regence BlueCross BlueShield of Utah 2890 E. Cottonwood Pkwy Salt Lake City	800-624-6519 DND regence.com/ut	498,017	1	500	\$1.012 billion	Individual, group, FEP, ASO, Medicare, dental, vision, HSA, life	Jennifer Danielson	1942
UnitedHealthcare of Utah 2525 Lake Park Blvd Salt Lake City	800-624-2942 801-982-4550 uhc.com	265,000	2	700	\$219 million	Employer, Medicare, military	Pam Gold	1974
Opticare of Utah, Inc. 1901 W. Pkwy Blvd. Salt Lake City	801-869-2020 801-954-0054 opticareofutah.com	155,000	1	11	\$4.2 million	Group and individual, vision plans, eye exams and hardware coverage, LASIK surgery	Aaron Schuback	1986
Gallagher Benefit Services 6330 S. 3000 E., Ste. 670 Salt Lake City	801-559-2929 801-559-2953 gallagherbenefits.com/utah	150,000	2	30	\$361.8 million	Medical, dental, vision, life & AD&D, STD, LTD, Ancillary	Ryan Olsen	1927

DND= Did Not Disclose N/A= Not Available
Please note that some firms chose not to respond, or failed to respond in time to our inquiries.
All rights reserved. Copyright 2012 by Enterprise Newspaper Group

Whatever the

Risk

We Have A

Solution

After insuring Utah businesses for over 50 years, we've learned a thing or two about finding solutions for risk. Whether you operate a small business on main street, or a large company that covers the state, we can find the right insurance and risk management solutions for your business.

To see how we can help you, give us a call

801-685-6860



www.beehiveinsurance.com
801-685-6860 | 800-323-6303





What are you returning home to?

Complete Fire Damage Restoration and Recovery Services

From property cleanup and smoke removal to content restoration and total reconstruction services, BELFOR provides the seamless fire recovery solutions necessary for our clients to get back to their homes. Back to their businesses. Back to their lives.

- 24/7 Emergency Response
- Water Extraction & Dehumidification
- Smoke & Odor Removal
- Fire Restoration
- Art and Vital Document Recovery
- Work With All Insurance Companies

1.877.232.6524 • 801.936.1212



UTAH Best Of State Award, 2011-2012



870 W. Robinson Dr., Suite F North Salt Lake, UT 84054
www.belforutah.com

UT License #4882768-5501 • se habla español

Top Hospitals in Utah

Ranked by Number of Beds

Hospital Name Address	Phone Web	# of Beds	# of Employees	For Profit	Specialties	Administrator
			# of Physicians	Year Established		Owner
University Hospital 50 N. Medical Dr. Salt Lake City	801-581-2121 healthcare.utah.edu/ hospital	720	8,000 1,000	No 1905	As an academic medical center all medical specialties are covered. 120+	Vivian Lee David Entwistle DND
Intermountain Medical Center 5121 S. Cottonwood St. Murray	801-507-7000 intermountain healthcare.org	472	4,401 2200	No DND	Comprehensive Heart Services, Cancer Services, Pulmonary and Lung Services, Surgery, Level One Trauma Center, Women and Newborn Services, Acute and Intensive Care Services	David Grauer Intermountian Healthcare
Utah Valley Regional Medical Center 1034 N. 500 W. Provo	801-357-7850 intermountain healthcare.org	395	3,088 532	No DND	Level II Trauma Center, Cancer and Heart Services, Newborn Intensive Care, Surgery, Stroke Care, Hyperbaric Medicine	Steve Simoot Intermountian Healthcare
LDS Hospital 8th Ave. & C St. Salt Lake City	801-408-1100 intermountain healthcare.org	350	1,469 1,500	No DND	Surgical, ER, Women's Services, Bone Marrow Transplant and Acute Leukemia Program, Behavioral Health	Jim Sheets Intermountian Healthcare
McKay-Dee Hospital Center 4401 Harrison Blvd. Ogden	801-627-2800 intermountain healthcare.org	344	2,693 922	No DND	Level Two Trauma Center, Heart and Cancer Services, Newborn Intensive Care Unit, Obstetrics, Surgery	Timothy Pehrson Intermountian Healthcare
Primary Children's Medical Center 100 Mario Capecchi Dr. Salt Lake City	801-662-1000 intermountain healthcare.org	281	3,206 1,012	No DND	Pediatric Trauma One Emergency Center, Heart Services, Cancer Services, Organ Transplants	Katy Welkie Intermountian Healthcare
Dixie Regional Medical Center 1380 E. Medical Dr. St. George	435-251-1000 intermountain healthcare.org	245	2,068 255	No DND	ER, Heart Surgery, Newborn Intensive Care Unit, Surgery	Terri Kane Intermountian Healthcare
Davis Hospital & Medical Center 1600 W. Antelope Dr. Layton	801-807-1000 davishospital.com	225	810 420	Yes 1976	Cardiology, Critical Care, Emergency Medicine, Fertility Services, Gastroenterology, General/ Vascular Surgery, Obstetrics/Gynecology, Hyperbaric and Wound Care Center, Neonatology, Oncology, Orthopedics, Pediatrics, Diagnostic Imaging, Urology, Women's Services	Mike Jensen IASIS Healthcare
Jordan Valley Medical Center 3580 W. 9000 S. West Jordan	801-561-8888 jordanvalleymc.com	183	850 496	DND 1983	Cardiology, Critical Care, Emergency Medicine, Fertility Services, Gastroenterology, General/ Vascular Surgery, Obstetrics/Gynecology, Hyperbaric and Wound Care Center, Neonatology, Oncology, Orthopedics, Pediatrics, Diagnostic Imaging, Urology, Women's Services	Steven M. Anderson IASIS Healthcare
Salt Lake Regional Medical Center 1050 E. South Temple Salt Lake City	801-350-4111 saltlakeregional.com	158	559 557	DND 1875	Cardiology, Critical Care, Emergency Medicine, Fertility Services, Gastroenterology, General/ Vascular Surgery, Obstetrics/Gynecology, Hyperbaric and Wound Care Center, Neonatology, Oncology, Orthopedics, Pediatrics, Diagnostic Imaging, Urology, Women's Services	Jeff Frandsen IASIS Healthcare
Logan Regional Hospital 1400 N. 500 E. Logan	435-716-1000 intermountain healthcare.org	148	1,070 251	No DND	ER, Obstetrics, Surgery, Cancer Center	Michael Clark Intermountian Healthcare
Pioneer Valley Hospital 4155 S. Pioneer Pkwy West Valley City	801-964-3100 pioneervalley hospital.com	139	450 496	DND 1983	Cardiology, Critical Care, Emergency Medicine, Fertility Services, Gastroenterology, General/ Vascular Surgery, Obstetrics/Gynecology, Hyperbaric and Wound Care Center, Neonatology, Oncology, Orthopedics, Pediatrics, Diagnostic Imaging, Urology, Women's Services	Steven A Andreson IASIS Healthcare
American Fork Hospital 170 N. 110 E. American Fork	801-855-3300 intermountain healthcare.org	88	727 325	No DND	ER, Women and Newborn Services, Surgery, Diagnostic Imaging	Michael Olson Intermountian Healthcare

DND= Did Not Disclose N/A= Not Available
Please note that some firms chose not to respond, or failed to respond in time to our inquiries.
All rights reserved. Copyright 2012 by Enterprise Newspaper Group

Top Hospitals in Utah

Ranked by Number of Beds

Hospital Name Address	Phone Web	# of Beds	# of Employees		Year Established	Specialties	Administrator Owner
			# of Physicians	For Profit			
Riverton Hospital 12600 S. 3741 W. Riverton	801-285-2010 intermountain healthcare.org	88	497 280	No DND	Women and Newborns, ER, Surgical Services, Outpatient Services, Diagnostic Imaging	Blair Kent Intermountian Healthcare	
Alta View Hospital 9960 S. 1300 E. Sandy	801-501-2600 intermountain healthcare.org	80	567 750	No DND	ER, Women's and Newborn Services, Medical and Surgical Services	Bryan Johnson Intermountian Healthcare	
Valley View Medical Center 1303 N. Main St. Cedar City	435-868-5000 intermountain healthcare.org	48	396 112	No DND	ER, Obstetrics, Surgery, Cancer Services, Cardiology, Spine & Pain Services, Diagnostic Imaging	Jason Wilson Intermountian Healthcare	
Sevier Valley Medical Center 1000 N. Main Richfield	435-893-4100 intermountain healthcare.org	42	160 80	No DND	ER, Diagnostic Imaging, Dialysis, Family Medicine, General Surgery, Obstetrics, Lab, Sleep Lab	Gary Beck Intermountian Healthcare	
The Orthopedic Specialty Hospital (TOSH) 5848 S. 300 E. Murray	801-314-4100 intermountain healthcare.org	36	413 150	No DND	Orthopedics, Sports Medicine, Joint Replacement, Physical Therapy, Spine Care, Arthritis Management Center, Nutrition Services, Sports Performance	Barbara Ohm Intermountian Healthcare	
Park City Medical Center 900 Round Valley Dr. Park City	435-658-7000 intermountain healthcare.org	26	322 163	No DND	ER, Diagnostic Imaging, ProHealth Lab, Family Medicine, General Surgery, Obstetrics, Plastic Surgery, Nutrition Counseling	Si Hutt Intermountian Healthcare	
Bear River Valley Hospital 1000 W. 905 N. Tremonton	435-207-4500 intermountain healthcare.org	20	132 82	No DND	ER, Women and Newborn Services, Surgical, Diagnostic Imaging, Physical Therapy	Eric Parker Intermountian Healthcare	
Delta Community Medical Center 126 S. White Sage Ave. Delta	435-864-5591 intermountain healthcare.org	20	66 27	No DND	ER, Diagnostic Imaging, Family Medicine, General Surgery, Obstetrics, Lab	James Beckstrand Intermountian Healthcare	
Fillmore Community Medical Center 674 S. Highway 99 Fillmore	435-743-5591 intermountain healthcare.org	20	68 8	No DND	ER, Diagnostic Imaging, Family Medicine, General Surgery, Obstetrics, Lab	James Beckstrand Intermountian Healthcare	
Heber Valley Medical Center 1485 S. Highway 40 Heber	435-654-2500 intermountain healthcare.org	20	112 92	No DND	ER, Family Medicine, General Surgery, Obstetrics, Lab, Plastic Surgery, Sleep Lab	Shawn Morrow Intermountian Healthcare	
Orem Community Hospital 331 N. 400 W. Orem	801-224-4080 intermountain healthcare.org	20	189 532	No DND	Obstetrics, Women's Services, Same-day Surgery, Imaging, ER	Steve Badger Intermountian Healthcare	
Sanpete Valley Hospital 1100 S. Medical Dr. Mt. Pleasant	435-462-2441 intermountain healthcare.org	20	122 88	No DND	ER, Diagnostic Imaging, Family Medicine, General Surgery, Obstetrics, Sleep Lab, Orthopedics	Mark Allen Intermountian Healthcare	

DND= Did Not Disclose N/A= Not Available
Please note that some firms chose not to respond, or failed to respond in time to our inquiries.
All rights reserved. Copyright 2012 by Enterprise Newspaper Group



John Walton
Business Banking
Sr. VP Team Leader
(801) 924-3633

BUSINESS LENDING IS OUR BUSINESS

SBA Loans • 504 • Commercial Mortgage • LOC



BANK of UTAH

711 S. State St. (801) 532-7111
Salt Lake City, UT 84111 Equal Housing Lender | Member FDIC

Top Vision Centers in Utah

Ranked by Number of Patients Seen in 2011

Vision Center Name Address	Phone Fax Web	# of Patients Seen in 2011	# of Full Time Employees # of Eye Exams in 2011	# of Ophthal- mologists # of Optometrists	Same Day Appointments Optical Shop on Site	Services Offered	Owner
John A. Moran Eye Center 65 Mario Capecchi Dr. Salt Lake City	801-581-2352 DND moraneyecenter.org	124,000	500 120,000	28 9	Yes Yes	Comprehensive ophthalmology, cataract, corneal diseases, refractive surgery/LASIK, glaucoma, neuro ophthalmology, oculoplastic and facial plastic surgery, pediatric ophthalmology, adult strabismus, retinal diseases, uveitis, ocular infectious disease, triage, optometry and contact lens services	University of Utah Healthcare John A. Moran Eye Center
Mount Ogden Eye Center 4360 Washington Blvd Ogden	801-476-0494 801-479-3937 mountogdeneye.com	64,000	73 44,800	7 2	Yes Yes	Comprehensive eye exams, LASIK, cataract surgery, diabetic retinopathy, macular degeneration, facial cosmetic surgery	Mark G. Ballif
Standard Otical Company 1901 W. Parkway Blvd. Salt Lake City	1-800-393-2273 DND DND	62,500	155 57,000	2 18	Yes Yes	Exams, glasses, contacts, LASIK, cataracts, diabetic care, glaucoma, and all insurances for medical care	Aaron Schubach
Wolcott Optical Service, LC 3145 Highland Dr. Salt Lake City	801-485-4474 801-485-4497 wolcottoptical.com	10,000	8 570	0 1	Yes Yes	Eye exams and full optical retail, prescription eye wear, contact lenses and non-prescription sunglasses	Ron Wolcott Janet Wolcott
Clair Optical 1025 E. 3300 S. Ste. A Salt Lake City	801-466-3937 DND clairoptical.com	8,000	5 4,000	3 0	Yes Yes	Glasses, contacts, sunglasses, eye case supplies	Alan Seyboldt
The Eye Institute of Utah 755 E. 3900 S. Salt Lake City	801-266-2283 801-268-6151 theeyeinstitute.com	7,785	46 16,107	6 1	Yes No	Custom cataract surgery, corneal transplants, dry eye, facial plastics, glaucoma, ICL, keratoconus, LASIK/PRK, retina, refractive lens exchange	Robert Cionni
Alta View Eye Care Center 9720 S. 1300 E. Sandy	801-572-0631 801-572-0670 altavieweye.com	6,622	10 4,489	1 1	Yes Yes	Comprehensive eye care, exam, cataracts, glaucoma, LASIK	Mathew R. Tempest
Utah Eye Associates 150 S. 1500 E. Salt Lake City	801-363-2851 801-363-7186 utaheyeassociates.com	4,500	3 2,500	0 1	Yes Yes	LASIK, diabetic eye care, dry eye treatment, general and medical examination, contact lens services	David Masihaas
Davis Vision Center 1325 W. South Jordan Pkwy #103 South Jordan	801-253-3080 801-253-0772 davisvisionmd.com	4,000+	4 DND	1 1	Yes Yes	Eye exams, glasses, contacts, LASIK, cataract, ER	Brian R. Davis
Broadway Eye Clinic 250 E. 300 S. Salt Lake City	801-322-0467 801-363-6053 visionsource-broadway.com	3,000	6 2,000	2 DND	Yes Yes	Primary eye care providers, including treatment and management of eye diseases and ocular conditions. Full optical with fashion designer frames and latest technology in optical lenses, contact lens services, vision therapy	Terry Berner Karri Buresh
Wasatch Vision Clinic 849 E. 400 S. Salt Lake City	801-328-2020 801-363-2201 wasatchvision.com	3,000	4 2,500	0 3	Yes Yes	Complete eye care services, treatment of eye disease, LASIK comanagement, specialty contact lenses, Keratocounus, in office lab, large frame section	DND
Precision Eye Care 6095 S. Fashion Blvd, Ste. 110 Murray	801-262-2020 DND precisioneye-care.com	728	1 728	0 1	Yes Yes	Comprehensive eye and vision care	Stuart Anderson
Salt Lake Vision 34 S. 500 E. #201 Salt Lake City	801-288-2020 DND saltlakeeyedoctor.com	360	1 360	0 1	Yes Yes	Comprehensive eye and vision care	Stuart Anderson
Hoopes Vision 1001 S. Centennial Pkwy Ste. 400 Salt Lake City	801-568-0200 801-563-0200 hoopesvision.com	DND	60+ DND	4 6	Yes No	LASIK, cataract surgery, custom laser cataract surgery, PRK, intacs, cornea transplants, ICL (intraocular contact lenses)	Phillip C. Hoopes

DND= Did Not Disclose N/A= Not Available
Please note that some firms chose not to respond, or failed to respond in time to our inquiries.
All rights reserved. Copyright 2012 by Enterprise Newspaper Group



Standard Optical

Where Good Vision is Always in Fashion.



You don't make it to 100 without being a true leader of innovation.

That's why Standard Optical continues to develop new and different ways to improve the vision of Utahns right here in the community. So now that we're 100, we're not going to stop innovating. We'll continue to work hard for you—for many more years to come.

Visit us at StandardOptical.net



Check out our appointment app on iTunes



Find us on Facebook

100 YEARS COUNTLESS INNOVATIONS

Top Colleges and Universities in Utah

Ranked by Number of Full Time Students Enrolled in Fall of 2011

School Name Address	Phone Fax Web	# of Full Time Students Enrolled in fall of 2011	Degrees Offered	MBA Program Programs offered online	Undergraduate Tuition per year for residents Average Cost of Books and Misc. Fees per year	President
Brigham Young University 150 E. 1230 N. Provo	801-422-4636 801-422-0605 byu.edu	32,980	Bachelor's, Master's, Doctorate's	Yes Yes	\$4,710 \$1,000	Cecil O. Samuelson
Utah Valley University 800 W. University Pkwy Orem	801-863-4636 801-863-8343 uvu.edu	32,395	Certificate/Diploma, Associate's, Bachelor's, Master's	Yes Yes	\$4,122 \$664	Matthew S. Holland
Salt Lake Community College 4600 S. Redwood Rd Salt Lake City	801-957-4111 DND slcc.edu	27,041	Certificates/Diploma	No Yes	\$1,526 DND	Cynthia A. Bioteau
Weber State University 3848 Harrison Blvd. Ogden	801-626-6000 801-626-8021 weber.edu	25,301	Associate's, Bachelor's, Master's	Yes Yes	\$4,548 \$1,600	F. Ann Millner
Utah State University Old Main Hill Logan	435-797-1000 435-797-3880 usu.edu	20,880	Certificate, Associate's, Bachelor's, Master's, Doctorate's	Yes Yes	\$5,021 \$2,130	Stan L. Albrecht
Dixie State College of Utah 225 S. 700 E. St. George	435-652-7500 435-656-4001 dixie.edu	6,593	Associate's, Bachelor's	No Yes	\$3,469 \$1,150	Stephen D. Nadauld
Westminster College 1840 S. 1300 E. Salt Lake City	801-484-7651 DND westminstercollege.edu	3,358	Bachelor's, Master's	Yes Yes	\$27,182 DND	Brian Levin-Stankevich
Argosy University 121 Election Rd. Ste 300 Draper	801-601-5000 801-601-4990 argosy.edu	214	Associate's, Bachelor's, Master's, Doctorate's	Yes Yes	\$12,852 \$1,212	David Tieten
University of Utah 201 Presidents Circle Salt Lake City	801-581-7200 DND utah.edu	DND	Associate's, Bachelor's, Master's, Doctorate's	DND DND	DND DND	DND

DND= Did Not Disclose N/A= Not Available
Please note that some firms chose not to respond, or failed to respond in time to our inquiries.
All rights reserved. Copyright 2012 by Enterprise Newspaper Group

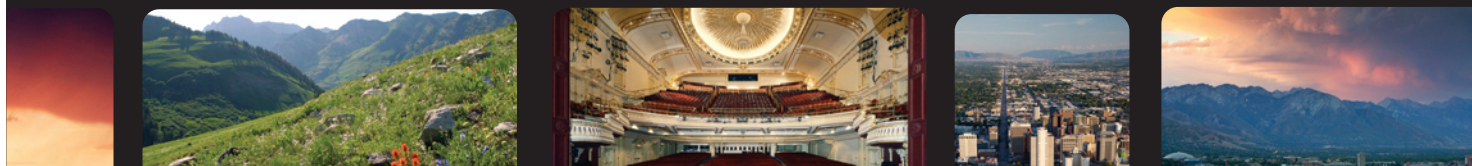
Don't be left out



BOOK of LISTS 2013

Have your business
included in next year's
Book of List.

For more information contact
Ann Johnson
801-533-0556 ex. 207
ann@senterprise.com



LEADERSHIP

Corporate Solutions is your key to high impact leadership training designed for managers, executive leaders, teams and departments. Acquire the elements essential for effective leadership through our broad scope of trainings including, coaching skills, conflict resolution strategies and leading for organizational change.

Take advantage of training discounts and learn from experts who offer a comprehensive approach to leadership development with relevant and challenging learning experiences. Trainings can be tailored to meet the needs of your company.

Lead the way you have always wanted to! Contact us now.

Corporate Solutions
801-957-5270

www.mbrcslcc.com/corporatesolutions



Salt Lake
Community
College  STEP AHEAD.

 miller business
resource center
at SALT LAKE COMMUNITY COLLEGE

Top Northern Utah Golf Courses

Ranked by Slope

Page 1

Course Name Address	Phone Fax Web	Slope	Rating Par	# of Tournaments Hosted in 2011	Greens Fees per 18 Holes	Type of Course	Head Professional
Red Ledges Club 205 N Red Ledges Blvd Heber City	435-657-4054 DND redledges.com	151	76.9 72	15	DND	Private	Jon Paupore
Thanksgiving Point Golf Course 3300 W Clubhouse Dr Lehi	801-768-7401 801-768-7410 thanksgivingpoint.com vanguardgolf.com	145	77.6 72	146	\$29-\$85	Public	Mark Whetzel
Park Meadows Country club 2000 Meadows Dr Park City	435-649-2460 435-658-4353 parkmeadowsgolf.com	142	74.5 72	10	\$80	Private	Bobby Trunzo
Stonebridge Golf Club 4415 Links Dr West Valley City	801-957-9000 801-957-9075 golfstonebridgeutah.com	139	74.2 72	79	\$30	Public	Clark Garso
Cedar Hills Golf Club 10640 N Clubhouse Dr Cedar Hills	801-796-1705 801-763-8546 cedarhillsgolfclub.com	136	71.7 72	50	\$24-\$42	Public	Jim Madsen
The Jeremy Golf & Country Club 8770 N Jeremy Rd Park City	435-649-2700 435-649-2193 thejeremy.com	136	73.7 72	20	DND	Private	Jake Hanley
Oakridge Country Club 1492 W Shepard Ln Farmington	801-451-2229 801-451-2229 oakridgecc.com	136	72.6 72	9	\$75	Private	Richard Mears
Riverside Country Club 2701 N University Ave Provo	801-373-8262 801-374-1359 riversidecountryclub.org	136	73.1 72	DND	\$50	Private	Robert McArthur
Willow Creek Country Club 8505 S Willow Creek Dr Sandy	801-942-1621 801-944-5088 willowcreekcc.com	136	72.8 72	25	\$95	Private	Eric Nielsen
Hobble Creek Golf Course 94 Hobble Creek Canyon Rd Springville	801-489-6297 DND springville.org	131	70 71	2	\$42-\$44	Public	Sonny Braun
Spanish Oaks Golf Course 2300 E Powerhouse Rd Spanish Fork	801-804-4053 801-798-5092 golfspanishoaks.com	127	69.5 72	25	\$26-\$28	Public	Ryan Rhees
The Ranches Golf Course 4128 Clubhouse Ln Eagle Mountain	801-789-8100 801-768-7410 theranchesgolf.com vanguardgolf.com	126	73.3 72	51	\$27-\$44	Public	Tele Wightman
Wingpointe 3602 W 100 N Salt Lake City	801-575-2345 801-575-2392 slc-glof.com	126	71.5 72	28	\$33	Public	Lynn Landgren
Eaglewood Golf Course 1110 E Eaglewood Dr North Salt Lake	801-299-0088 801-335-3217 eaglewoodgolf.com	125	71.8 71	70	\$38	Public	Brent Moyes
Mountain Dell Lake Course Interstate 80 Exit 134 Salt Lake City	801-582-3812 801-581-0649 slc-golf.com	125	69.7 71	DND	\$35	Public	Mike Brimley
Old Mill Golf Course 6080 S Wasatch Blvd Salt Lake City	801-424-1302 801-424-1305 slcountygolf.slco.org	124	69.8 71	30+	\$32-\$46	Public (Salt Lake County)	Brian Schramm
River Bend Golf Course 12800 S 1040 W Riverton	801-253-3673 801-253-3942 slcountygolf.com	124	70.8 72	42	\$42-\$44	Public	Brent A. Baldwin
Bonneville 954 S Conner St Salt Lake City	801-583-9513 801-581-0648 slc-golf.com	123	69.7 72	DND	\$35	Public	Steve Elliot
Carbon Country Club 3055 N Highway 50-6 Helper	435-637-2388 435-637-0205 carboncountclub.com	122	68.7 70	15	\$27-\$39	Public	Tom King

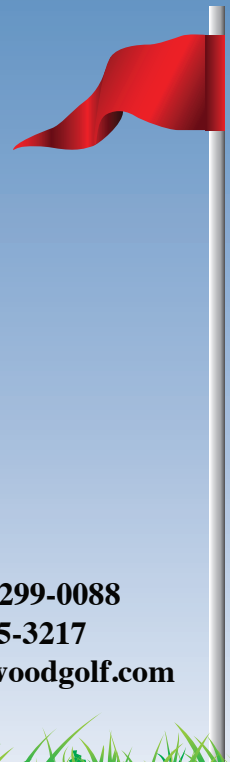
DND= Did Not Disclose N/A= Not Available
Please note that some firms chose not to respond, or failed to respond in time to our inquiries.
All rights reserved. Copyright 2012 by Enterprise Newspaper Group

Eaglewood Golf Course

Specializing in Corporate/Group Golf Outings and Events; Weddings, Food Services and Catering; Golf Instruction and Merchandising.



Eaglewood Golf Course is northern Utah's premier corporate golf outing venue. Located just 10 minutes from downtown Salt Lake City, our perfectly manicured fairways and greens include stunning views of the valley and Great Salt Lake. Eaglewood's service is second to none. We help make your tournament coordinator's job easy from inception to conclusion. Our spectacular banquet hall seats up to 180 people, making it perfect for large tournaments, corporate parties, seminars, meetings, weddings or receptions. Whatever you needs, we have the complete package for your event.



**1110 E. Eaglewood Dr.
North Salt Lake, Ut 84054**

**Phone: 801-299-0088
Fax: 801-335-3217
Web: eaglewoodgolf.com**



Top Northern Utah Golf Courses

Ranked by Slope

Page 2

Course Name Address	Phone Fax Web	Slope	Rating Par	# of Tournaments Hosted in 2011	Greens Fees per 18 Holes	Type of Course	Head Professional
Eagle Mountain 960 E 700 S Brigham City	435-723-3212 DND eaglemountaingc.com	121	71.3 71	15	\$26-\$38	Public	Chris Marx
Glenmoor Golf Course 9800 S 4800 W South Jordan	801-280-1742 DND DND	121	71.1 72	DND	\$28-\$42	Public	Mike Booth
River Oaks Golf Course 9300 S Riverside Dr Sandy	801-568-4653 801-563-7415 sandy.utah.gov/riveroaks	121	69.7 70	50+	\$38-\$40	Public	Guy Lester/ Mitch Stone
Logan Country Club 710 N 1500 E Logan	435-753-6050 435-750-0951 DND	120	68.8 71	50	\$52	Private	Dan Roskelly
Mountain Dell Canyon Course Interstate 80 Exit 134 Salt Lake City	801-582-3812 801-581-0649 slc-golf.com	120	70.2 72	DND	\$35	Public	Mike Brimley
Sun Hills Golf Course 3185 N North Hills Dr Layton	801-771-4814 801-771-3104 sunhillsgolf.com	119	DND 71	DND	\$26-\$40	Public	Chris Oostyen
Ben Lomond Golf Course 1800 N Hwy 89 Harrisville	801-782-7754 801-737-3082 benlomondgolf.com	118	68.1 72	22	\$26-\$38	Public	Jeff Cliften
Murray Parkway Golf Course 6345 S Murray Pkwy Murray	801-262-4653 801-288-2830 DND	117	708 72	DND	\$28-\$42	Public	Gary Healy
Rose Park 1386 N Redwood Rd Salt Lake City	801-596-5030 801-359-3420 slc-golf.com	117	70 72	DND	\$28	Public	Derek Schmehl
Glendale 1630 W 2100 S Salt Lake City	801-974-2403 801-973-7194 slc-golf.com	114	69.3 72	DND	\$30	Public	Dave Carter
The Barn Golf Club 305 W Pleasant View Dr Pleasant View	801-782-7320 801-782-5001 thebarnclub.com	111	67.3 71	22	\$40	Public	Kelly Woodland
Remuda Golf Course 2600 W 3500 N Farr West	801-731-7200 DND remudagolf.com	103	67.7 72	34	\$24-\$40	Public	Fred Spinelli
Crane Field Golf Course 3648 W 2650 N Clinton	801-779-3800 DND cranefieldgolf.com	DND	DND 72	20	\$20-\$29	Public	Matt Bright/ Wiley Adams

DND= Did Not Disclose N/A= Not Available
Please note that some firms chose not to respond, or failed to respond in time to our inquiries.
All rights reserved. Copyright 2012 by Enterprise Newspaper Group

WE MEAN BUSINESS

825 North 300 West, Suite C309 • Salt Lake City, Utah 84103
Phone: (801) 533-0556 • FAX: (801) 533-0684
www.slenterprise.com

 **Enterprise**
UTAH'S BUSINESS JOURNAL

MOAB GOLF CLUB

2705 E Bench Road
Moab, UT 84532-3540
Phone: (435) 259-6488

DON'T FORGET GOLF ON YOUR MOAB ADVENTURE!

Moab Golf Club welcomes golfers every year to enjoy a round of golf on our picturesque 18-holes. We opened for play in 1960 and are now recognized as the best choice for public golf in Moab. Test your skills on our challenging 18 holes of golf and you'll see why countless groups have chosen Moab Golf Club over the years.

The golf course at Moab Golf Club is the embodiment of Utah Golf. Featuring dramatic landscapes to the east and subtle elevation changes throughout, our course is one you won't easily forget. From the back tees, you'll play to 6819 yards on our course for a par of 72. Amenities include pro shop, snack bar and driving for your convenience.



For rates, tournament information or to schedule a tee time,
please visit our website at

www.moabcountryclub.com

or call us at

435-259-6488

Top Southern Utah Golf Courses

Ranked by Slope

Course Name Address	Phone Fax Web	Slope	Rating Par	# of Tournaments Hosted in 2011	Greens Fees per 18 Holes	Type of Course	Head Professional
Conestoga Golf Club 1499 Falcon Ridge Pkwy Mesquite	702-346-4292 702-346-4480 conestogagolf.com	147	74.9 72	20	\$140	Public	Rob Krieger
Coral Canyon Golf Course 1925 N Canyon Greens Drive Washington	435-688-1700 435-688-1765 coralcanyongolf.com vanguardgolf.com	142	73.5 72	72	\$48-\$105	Public	Casey Fowles
Coyote Springs Golf Club 3100 State Rte 168 Coyote Springs	703-422-1400 702-422-1419 coyotesprings.com	141	75.8 72	25+	\$80-\$175	Public	Karl Larcom
Green Spring Golf Course 588 N Green Spring Dr Washington	435-673-7888 435-986-1394 greenspringgolfcourse.com	138	73.5 72	3	\$52	Public	Nick Neeley
Sunbrook Golf Club 2366 W Sunbrook Dr St George	435-627-4400 435-674-9836 sgcity.org	135	73.1 72	8+	\$40-\$70	Public	Reed McArthur
The Golf Course at Sand Hollow Resort 5625 W Clubhouse Dr Hurricane	435-656-4653 DND sandhollowresort.com	133	71.9 72	DND	\$100-\$125	Public	Colby Cowan
Falcon Ridge Golf Course 1024 Normandy Ln Mesquite	877-270-4653 702-345-2465 golfalcon.com vanguardgolf.com	131	70.3 71	105	\$92-\$110	Public	Brian Wursten
Sky Mountain Golf Club 1030 N 2600 W Hurricane	435-635-7888 435-635-6038 skymountaingolf.com vanguardgolf.com	131	70.9 72	48	\$32-\$68	Public	Kent Abegglen
Moab Golf Club 2705 SE Bench Rd Moab	435-259-6488 DND moabgolfcourse.com	130	72.8 72	15	\$44	Public	Robert Jones
The Hideout Golf Club 549 S Main St Monticello	435-587-2200 435-587-2272 hideoutgolf.com	126	69.7 72	6	\$40	Public	Tyler Ivins
Sunset View Golf Course 1800 N Highway 6 Delta	435-864-2508 435-864-5015 glofsunsetview.com	126	71.9 72	24	\$30	Public	Todd Mullen
Bloomington Country Club 3174 S Bloomington Dr E St George	435-673-4687 435-673-3958 bloomingtoncountryclub.com	125	72.2 71	25	\$60	Private	Scott Brandt
Palms Golf Club 530 E Peppermill Palms Blvd Littlefield	702-346-4067 928-347-5356 palmsgolfclub.com	125	72.9 71	14	\$75	Public	Tom Winchester
Cedar Ridge 200 E 900 N Cedar City	435-586-2970 435-865-1314 cedarcity.org	124	71.9 73	13	\$22	Public	John L. Evans

DND= Did Not Disclose N/A= Not Available
Please note that some firms chose not to respond, or failed to respond in time to our inquiries.
All rights reserved. Copyright 2012 by Enterprise Newspaper Group



Cari Fullerton
Business Banking
Sr. VP Team Leader
(801) 391-3600

**BUSINESS LENDING
IS OUR BUSINESS**
SBA Loans • 504 • Commercial Mortgage • LOC



BANK of UTAH

711 S. State St.
Salt Lake City, UT 84111

(801) 532-7111

Equal Housing Lender Member FDIC



CORAL CANYON
GOLF COURSE
www.coralcanyon.com

Enjoy luxurious golf at
the doorway to some
of the world's most
famed natural wonders

WASHINGTON, UT
(435) 688-1700

FOR THE BEST CORPORATE GOLF EVENTS...

COME PLAY IN OUR BOARD ROOM

CORAL CANYON GOLF COURSE
SKY MOUNTAIN GOLF COURSE
THANKSGIVING POINT GOLF CLUB
THE RANCHES GOLF CLUB

Reserve your 2012 corporate event at
two of Southern Utah's most majestic
courses - Coral Canyon Golf Course and
Sky Mountain Golf Course.

Each of these championship courses
provides a perfect setting for your
corporate outing. Let one of our PGA
Golf Professionals make sure your group
enjoys a memorable day of golf, team
building and relaxation.



WWW.VANGUARDGOLF.COM



www.cityofhurricane.com

Panoramic views of
red sand and lava-filled
desert with scenery
overlooking Pine
Valley Mountain

HURRICANE, UT
(435) 635-7888

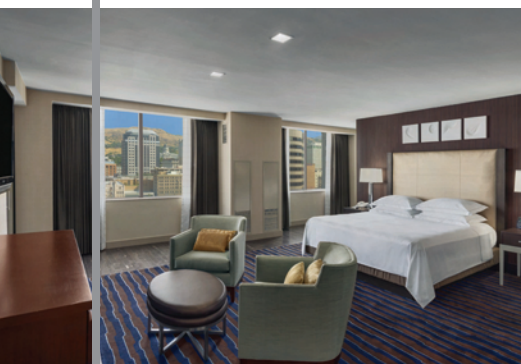
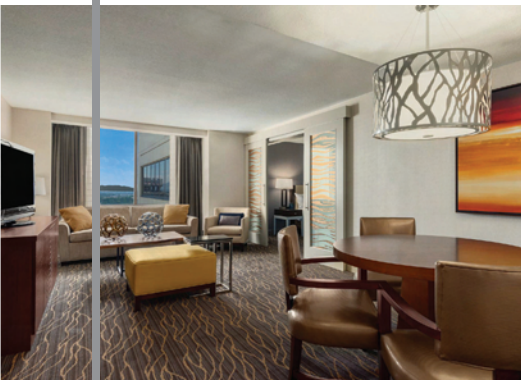


Top Hotels in Utah

Ranked by Total Number of Guest Rooms

Hotel Name Address	Phone Fax Web	# of: Guest Rooms, Standard Rooms, Suites	Rates: Lowest, Highest, Corporate	# of Meeting Rooms Meeting Rooms Max. Capacity	# of Utah Employees Distance From Nearest Major Airport	Amenities Available	General Manager, Year Established, Most Recent Renovation
Little America Hotel 500 S. Main St. Salt Lake City	801-596-5700 801-596-5911 littleamerica.com/slc	850 848 2	\$89 \$2,500 DND	21 1,000	500 7 miles	Valet parking, complementarity wifi, 2 swimming pools including as indoor/outdoor pool, 2 restaurants, sports bar	Ed Box 1945 2012
The Grand America Hotel 555 S. Main St. Salt Lake City	801-258-6000 801-258-6911 grandamerica.com	775 379 396	\$199 \$5,000 DND	35 3,000	750 7 miles	Spa, complimentary wifi, valet parking, business center, Jon-Jon, La Bonne Vie	Bruce Fery 2001 2012
Salt Lake City Marriott Downtown at City Creek 75 S. West Temple Salt Lake City	801-531-0800 801-532-4127 marriott.com/slcut	515 509 6	\$109 \$329 DND	21 1,200	210 7 miles	Indoor/outdoor pool, whirlpool, fitness center, weight room, Elevations Restaurant, bar, Starbucks, room service, concierge lounge, business center	Steve Lundgren 1981 2012
The Cliff Lodge 9600 Little Cottonwood Canyon Rd. Snowbird	801-947-8220 801-847-8227 snowbird.com	500 301 75	\$99 \$1,600 DND	31 DND	DND 29 miles	Business center, concierge, conference facilities, free valet parking, handicapped rooms/ facilities, internet, ski-out/ski-in, pool, hot tub, spa, 3 restaurants, room service, ski lockers, child care, fitness center, refrigerators	Bob Bonar 1973 2011
Hilton Salt Lake City Center 255 S. West Temple Salt Lake City	801-328-2000 801-238-4888 hiltonsaltlakecity.com	499 480 19	\$99 \$450 \$149	19 1,000	350 7 miles	24-hour business center, in-room mini-refrigerator, safety deposit box in every room, room service, Avis car rental on-site, fitness center, indoor pool, meeting space	Jeff Protzman 1984 2012
Sheraton Salt Lake City Hotel 150 W. 500 S. Salt Lake City	801-401-2000 801-531-0705 sheraton.com/sallakecity	362 330 32	\$89 \$359 \$319	22 900	170 7 miles	Conveniently located in the heart of downtown, 24-hour front desk service, complimentary airport shuttle, free wifi, Free PC work station	Terry Mariano 1970 2009
Salt Lake Marriott City Center 220 S. State St. Salt Lake City	801-961-8700 801-961-8704 marriott.com/slccc	359 DND 17	\$109 \$369 \$249	14 420	197 7.5 miles	Restaurant and lounge, room service, complimentary pool and fitness center, complimentary business center, spectacular views of the Gallivan Plaza, indoor golf simulators, concierge services	Doug Koob 2000 2009
Provo Marriott Hotel & Conference Center 101 W. 100 N. Provo	801-377-4700 801-377-4708 provomariott.com	330 324 6	\$89 \$139 \$129	20 28,000	145 49 miles	Full Service Hotel	John Garfield 1983 2012
Hilton Salt Lake City Airport 5151 Wiley Post Way Salt Lake City	801-539-1515 801-539-1113 hiltonslc.com	288 273 15	\$79 \$229 DND	13 500	135 3 miles	Complimentary wifi and airport shuttle service, pet friendly, on-site restaurant and bar, situated on an 8 acre lake with walking path	Dave Taber 1980 2007
The Lodge at Snowbird Hwy 210, Resort Entry 3 Snowbird	801-947-8220 801-947-8227 snowbird.com	143 DND DND	\$90 \$1,200 DND	2 28	DND 29 miles	Restaurant, ski lockers, free parking, free internet, pool, hot tub, steam room, kitchens, fitness center, meeting room, business center, child care	Bob Bonar 1971 2010
Hampton Inn Sandy 10690 Holiday Park Dr. Sandy	801-571-0800 801-572-0708 sandyut.hamptoninn.com	130 130 DND	\$89 \$189 DND	2 100	36 19 miles	Hot breakfast, on the go breakfast, free wifi, 24 hour suite shop	Adriana Cortes 1991 2011
Red Mountain Resorts 1275 E. Red Mountain Circle Ivins	435-673-4905 435-652-5777 redmountainresort.com	130 82 24	\$175 \$500 DND	9 233	250 25 miles	Spa, indoor and outdoor pool, whirlpools, hiking, bike rental, fitness classes, adventure sports, wellness testing	Tracey Welsh 1998 2006
Residence Inn Salt Lake City Airport 4883 W. Douglas Corrigan Way Salt Lake City	801-532-4101 801-532-4206 marriott.com/slcra	104 89 15	\$96 \$169 Varies	1 20	19 3 miles	Complimentary breakfast, free wifi, evening social Tuesdays-Thursdays, 24 hour gym, indoor pool and spa	Araceli Palma 2001 DND
The Inn at Snowbird Hwy 210, Resort Entry 3 Snowbird	801-947-8220 801-947-8227 snowbird.com	73 DND DND	\$79 \$1,300 DND	1 10	DND 29 miles	Free parking, pool, hot tub, ski lockers, free internet, child care, kitchens, business center, refrigerators	Bob Bonar 1972 DND

DND= Did Not Disclose N/A= Not Available
Please note that some firms chose not to respond, or failed to respond in time to our inquiries.
All rights reserved. Copyright 2012 by Enterprise Newspaper Group



We are pleased to announce the completion of an extensive \$10M Suite and Guest Room renovation. The new modernized look features colors, textures and details of design that echo the richness found in the stunning landscape of Utah.

Take Your Meetings Further - book a meeting at the Hilton Salt Lake City Center before April 6, 2013, to be held between January 1, 2013 and April 6, 2013, and receive TRIPLE meeting planner points and a 5% master account rebate. Restrictions apply, please contact the sales department for restriction rules and regulations.

To book at the Hilton Salt Lake City Center, call 1-800-HILTONS or visit our website at hiltonsaltlakecity.com.



Top Meeting Facilities in Utah

Ranked by Number of Breakout Rooms

Company Name Address	Phone Fax Web	# of Breakout Rooms	# of Usable Square Feet	# of Days in Service in 2011	# of Events Hosted in 2011	# of Utah Employees	Services Offered	Top Local Executive	Year Founded
The Salt Palace Convention Center 100 N. West Temple Salt Lake City	385-468-2222 DND saltpalace.com	64	679,000	DND	174+	125	Full service convention center including 10 exhibit halls	Dan Hayes	1969
The Grand America Hotel 555 S. Main St. Salt Lake City	801-258-6000 801-258-6911 grandamerica.com	35	75,000	365	1,500	750	Concierge, valet parking, complimentary WiFi, spa, business center, Jou-Jou, La Bonne Vie	Bruce Fery	2001
Miller Motorsports Park 2901 N. Sheep Ln. Tooele	435-277-8000 435-277-8008 millermotorsportspark.com	32	55,000	365	625	75	Team building, meeting space, catering, driving/riding school programs, off-road programs, go-karting, zipline	Bryan Detweiler	2006
Snowbird Ski and Summer Resort Highway 210 Snowbird	1-800-882-4766 DND snowbirdmeetings.com	32	50,000	365	395	fluctuates seasonally	Indoor/outdoor locations, banquets/catering, restaurants, lodging, skiing/snowboarding/snowshoeing, event tent, wireless internet, spa, shopping	Bob Bonar	1971
Deer Valley Resort 2250 Deer Valley Dr. S. Park City	800-424-3700 435-645-6939 deervalley.com	31	47,379	365	1,771	2,600	Lodging, banquets, meetings, weddings, reunions, skiing, ski lessons, equipment rental, licensed daycare, children's programs on and off slope, ski races, private First Tracks, snowmobiling, on-site shops, lift served mtn bike and hike, rental bikes, concerts and events	Dirk Beal	1981
Sheraton Salt Lake City Hotel 150 W. 500 S. Salt Lake City	801-401-2000 801-531-0705 sheraton.com/saltlakecity	22	33,000	300	700+	165	Conveniently located in the heart of downtown, 24-hour front desk service, complimentary airport shuttle, free WiFi, Free PC work station	DND	2009
Little America Hotel 500 S. Main St. Salt Lake City	801-596-5700 801-596-5911 littleamerica.com/slc	21	25,655	365	1,500	7,500	Valet parking, complimentary WiFi, 2 swimming pools, including indoor/outdoor pool	Ed Box	1945
Provo Marriott Hotel & Conference Center 101 W. 100 N. Provo	801-377-4700 801-377-4708 provomariott.com	20	28,000	335	800+	145	Full service hotel and conference center. Only Utah IACC approved location	John Garfield	1983
Hilton Salt Lake City 255 S. West Temple Salt Lake City	801-328-2000 801-238-4888 hiltonsaltlakecity.com	19	24,000	365	DND	350	PSAV Audio/Visual Equipment, 24-hour business center, complimentary printing service, express mail, video conferencing available, event services managers organizing your event, catering services, etc.	Melissa Deveraux	1984
Ogden Eccles Conference Center 2415 Washington Blvd. Ogden	801-689-8600 801-689-8651 oeccutah.com	16	80,092	352	201	74	Conference, meeting, exhibits, exclusive catering by SAVOR by SMG	Ross Reeder	1997
Salt Lake Marriott City Center 220 S. State St. Salt Lake City	801-961-8700 801-961-8704 marriott.com/slccc	14	15,119	365	697	197	Food and beverage, audiovisual, certified meeting planners, marriott reward points	Doug Koob	2000
South Towne Exposition Center 9575 S. State Street Sandy	385-468-2260 385-468-2275 southtowneexpo.com	14	258,000	314	205	30	Space for expos, meetings, etc., set up of tables, chairs, equipment, banners, event manager, cleaning, in-house food service and concessions, in-house AV company	Dan Hayes	2000
Hilton Salt Lake City Airport 5151 Wiley Post Way Salt Lake City	801-539-1515 801-539-1113 hiltonslc.com	11	13,000	365	DND	130	Full service	DND	DND
Joseph Smith Memorial Building 15 E. South Temple Salt Lake City	801-539-3130 801-539-3117 templesquarehospitality.com	11	18,000	305	4,500	110	Wedding ceremonies, receptions, lunches, dinners, business meetings, social events and take out	Dianne M. Theurel	DND

DND= Did Not Disclose N/A= Not Available
Please note that some firms chose not to respond, or failed to respond in time to our inquiries.
All rights reserved. Copyright 2012 by Enterprise Newspaper Group

The Salt Palace Convention Center

Nestled in the heart of downtown Salt Lake City, the Salt Palace Convention Center, with its 64 breakout rooms and more than 650,000 square feet of exhibit space, is the perfect place for meetings of any size or occasion. From our delicate snowflake chandeliers to our gorgeous five-story main concourse and centralized location, the Salt Palace is part architectural showpiece, part modern art sculpture and all business.

A U.S. Green Building Council's Silver LEED Awardee



100 S. West Temple
SLC, UT. 84101
385-468-2222

The South Towne Exposition Center

The South Towne Exposition Center is centrally located in the heart of Salt Lake's residential community, providing easy access to visitors along the entire Wasatch Front. From free on-site parking and large loading docks to individual hall sessions and meeting rooms, the South Towne Exposition Center makes hosting any event easier and more effective than ever.

9575 S. State Street
Sandy, UT 84070
385-468-2260



Top Meeting Facilities in Utah

Ranked by Number of Breakout Rooms

Company Name Address	Phone Fax Web	# of Breakout Rooms	# of Usable Square Feet	# of Days in Service in 2011	# of Events Hosted in 2011	# of Utah Employees	Services Offered	Top Local Executive	Year Founded
Lion House 63 E. South Temple Salt Lake City	801-363-5466 801-539-3256 templesquare hospitality.com	8	5,000	305	1830	78	Wedding lunches, dinners and receptions; business meetings, social events and children's birthday parties	Dianne M. Theurel	DND
Red Mountain Resorts 1275 E. Red Mountain Circle Ivins	435-673-4905 435-652-5777 redmountainresort.com	3	3,000	365	100	250	Outdoor venues, outdoor group adventures, catering-health conscious	Tracey Welsh	1998
Devereaux Mansion 340 West South Temple Salt Lake City	801-539-3130 801-363-5466 templesquare hospitality.com	DND	DND	305	DND	110	Wedding ceremonies, receptions, lunches, dinners, business meetings	Dianne M. Theurel	DND
Hampton Inn Sandy 10690 Holiday Park Dr. Sandy	801-571-0800 801-572-0708 sandyut.hamptoninn.com	DND	900	365	DND	36	Catering, AV equipment staff		DND 1991

DND= Did Not Disclose N/A= Not Available
Please note that some firms chose not to respond, or failed to respond in time to our inquiries.
All rights reserved. Copyright 2012 by Enterprise Newspaper Group





1-800-662-2525

www.crystalinns.com

Providing professional support
for all of your meeting room
needs, including AV equipment
and catering options.

Salt Lake City
230 West 500 South
Salt Lake City, UT 84101

West Valley City
2254 W. City Center Court
West Valley City, UT 84119

Midvalley
818 E. Winchester
Murray, UT 84107

Brigham City
480 Westland Drive
Brigham City, UT 84302

Logan
853 S. Hwy 89/91
Logan, UT 84321

Cedar City
1575 West 200 North
Cedar City, UT 84720

St. George
1450 S. Hilton Drive
St. George, UT 84770

Great Falls
3701 31st Street SW
Great Falls, MT 59404

Welcome to the Crystal Inn where we delight every guest, every day, one at a time.

Give Your Meetings a Breath of Fresh Air at Zermatt

It's not how far you go, it's how far you get away.

- *329 Luxury Guest Rooms and Suites*
- *Over 40,000 feet of Flexible Meeting Space*
- *Critically Acclaimed Dining*
- *European Spa*
- *Geothermal Crater*
- *Winter Sports*



Zermatt[®]

RESORT

Located in Midway, Utah
ZermattResort.com

866.937.6288



Top Restaurants in Salt Lake City, CBD

Ranked by Average Meal Price Per Person

Page 1

Restaurant Name Address	Phone Fax Web	Average Meal Price Per Person	Type of Cuisine	Full Bar	Corporate Lunches Available	Video Conferencing Available	Top Awards	Top Operating Partner
		Number of Seats	Type of Restaurant	Private Dining Rooms	Valet Offered Reservations			
Ruth's Chris Steak House 275 S. West Temple	801-363-2000 801-869-1682 ruthchrisprime.com	\$70	Steak House	Yes	Yes	Yes	"Best Bar"-SLC 2011 Dining Award	Mark Robbins
Fleming's 20 S. 400 W.	801-355-3704 801-355-3706 flemingssteakhouse.com	\$50	Steak House	Yes	Yes	Yes	City Weekly, People's Choice, Wine Enthusiast Award of Distinction, Wine Spectator Award for Excellence	Christopher Cox
The Roof Restaurant 15 E. South Temple 10th Floor	801-539-1911 801-539-3117 roofmenu.com	\$40	American	No	No	No	Salt Lake Magazine Reader's Choice, Best of City Search, Talk of Town, Corporate Cuisine Award, Best of State	Barbara Roberts
Grand America Hotel 555 S. Main St.	801-258-6702 801-258-6911 grandamerica.com	\$30	American Contemporary	No	Yes	No	"Best Hotel" 2012, "Best Brunch" 2012	Jed Box
L C Takata 18 W Market St.	801-519-9595 801-746-1804 DND	\$30	Sushi/ Japanese	Yes	Yes	Yes	Salt Lake Magazine "Best Sushi", "Best Japanese", "Best Restaurant", Hall of Fame, Zagat Rated 27 for Food	Takashi & Tamara Gibo
Spencer's for Steak and Chops 255 S. West Temple	801-238-4748 801-359-2938 spencersforsteakandchops.com	\$25	Steak, Seafood, Chops	Yes	Yes	Yes	Ten consecutive "Best Steakhouse" in Salt Lake City	DND
Tin Angel Cafe 365 W. 400 S.	801-328-4155 DND thetinangel.com	\$25	European Bistro	Yes	No	Yes	Salt Lake Magazine "Best New Discovery" 2009, "Best Neighborhood Restaurant" 2010, City Weekly "Best Eclectic Eatery" 2011	DND
The Garden Restaurant 15 E. South Temple	801-539-3170 81-539-3117 gardenmenu.com	\$15	American	No	No	Yes	Best in State, "Chef of Year"	Scott Ackley
Happy Sumo 153 S. Rio Grande	801-456-7866 801-456-7868 happysumosushi.com	\$15	Japanese/ Sushi	No	No	Yes	"Best New Restaurant", "Best Sushi", "Most Romantic", "Best Power Lunch"	DND
J. Wong's Asian Bistro 163 W. 200 S.	801-350-0888 801-350-0889 jwongslc.com	\$15	Asian	Yes	No	Yes	"Best Chinese Restaurant"-Salt Lake Magazine 2010, 2011 & 2012; Best of State 2012, Salt Lake Chamber Small Business Award 2011	DND
Cedars of Lebanon Restaurant 152 E. 200 S.	801-364-4096 801-933-5195 cedarsoflebanonrestaurant.com	\$13	East Mediterranean	Yes	No	Yes	Rated by New York Times	Marlene & Raffi Dechlian
California Pizza Kitchen 156 S. 400 W.	801-456-0075 801-456-0079 cpk.com	\$12	Pizza, Pasta, Salad	Yes	Yes	Yes	DND	DND
The Lion House Pantry 63 E. South Temple	801-539-3257 801-539-3256 pantrymenu.com	\$12	American	No	No	Yes	Zagat Rated, Best of State (Bakery)	David Bench
The Nauvoo Cafe 15 E. South Temple	801-539-3346 801-539-3117 nauvoocafe.com	\$10	American	No	No	Yes	Talk of Town	Scott Ackley

DND= Did Not Disclose N/A= Not Available
Please note that some firms chose not to respond, or failed to respond in time to our inquiries.
All rights reserved. Copyright 2012 by Enterprise Newspaper Group

EXPERIENCE THE NEW STANDARD FOR STEAKS.



“When it comes to steak in Salt Lake,
Spencer’s is in a league of its own.”

–City Weekly

Only the best will do at Spencer’s. That’s why you’ll find only USDA Prime Beef on our plates and Salt Lake’s most prestigious dining awards on our walls. In fact, we’re the only establishment in Utah where you’ll find cuisine, service and atmosphere of this quality. So, for the top of the line in steaks and chops, there’s nothing quite like Spencer’s in Salt Lake. Or anywhere else for that matter.

SPENCER’S
FOR STEAKS AND CHOPS



255 South West Temple, Salt Lake City, Utah 84101 801-238-4748 www.spencersforsteaksandchops.com
www.opentable.com reservations welcome

Top Restaurants in Salt Lake City, CBD

Ranked by Average Meal Price Per Person

Restaurant Name Address	Phone Fax Web	Average Meal Price Per Person	Type of Cuisine	Full Bar		Corporate Lunches Available		Top Awards	Top Operating Partner
		Number of Seats	Type of Restaurant	Private Dinning Rooms	Valet Offered Reservations	Video Conferencing Available			
Tony Caputo's Market & Deli 314 W. 1900 S.	801-531-8669 801-532-2930 caputosdeli.com	\$10	Italian	No	No	Yes	Salt Lake Magazine "Best Deli", NASFT "Outstanding Retailer" 2009, Zagat Best Bang for Your Buck	Tony Caputo	
		DND	Deli	Yes	No	No			
The Bayon 645 S. State St.	801-961-8400 801-961-8401 utahbayon.com	\$9	Cajon/ American	Yes	No	Yes	Salt Lake Magazine "Best Comfort Food", Esquire.com 2009 "Best Bars in America" Rating, Imbibe Magazine "Top 100 Places to Drink in America"	Mark Alston	
		143	Private Club	No	Lunch Only	No			
Sicilia Pizza & Kitchen 35 W. 300 S.	801-961-7077 DND siciliapizza.net	\$9	Italian	Yes	No	Yes	City Weekly Best Late Night Pizza	DND	
		80	Casual	No	Yes	No			
Steakhouse at Little America Hotel 500 s. Main St.	801-596-5704 DND DND	DND	American	Yes	Yes	Yes	2012 Trip Advisor Certificate of Excellence "Best Lunch Buffet", Best of State "Best Buffet"	DND	
		DND	Casual	Yes	No	No			

DND= Did Not Disclose N/A= Not Available
Please note that some firms chose not to respond, or failed to respond in time to our inquiries.
All rights reserved. Copyright 2012 by Enterprise Newspaper Group

FHA Title I Home Improvement Loans help eligible borrowers make home repairs and increase the value of their home quickly and affordably. First Utah Bank offers low fixed rates and affordable monthly payments with rapid approvals.

Home improvement loan proceeds may be used to finance alterations, renovations, repairs or additions that improve the basic livability of a property. Eligible improvements include:

- additional living space
- new roof
- new flooring
- electrical wiring
- plumbing
- new built-in appliances
- new porch or awnings
- new garage
- heating system
- new cabinets and countertops
- fence repair or installation
- driveway or walkway
- sheetrocking or painting
- installation of approved well and/or septic system

To get started today call 801-272-9454 or visit firstutahbank.com to find an office near you.

Visit us at www.facebook.com/firstutahbank

All loans subject to credit approval.

The improvements must become a permanent part of the real property and must be started after approval of the loan application. In addition, they cannot be considered luxury items as defined by the Federal Housing Administration (FHA), a department within the U.S. Department of Housing and Urban Development (HUD).

MEIER'S CATERING MENU

BAR-B-QUE CHICKEN & RIB MENU

Bar-B-Que Chicken
Smothered in our special bar-b-que sauce

Fresh Cut Fruit

Pasta Shrimp Salad

Utah Corn on the Cob
(seasonal)
Cooked on site

Ice Cold Lemonade

Bar-B-Que Boneless

Country Style Spare Ribs
Baked Chuckwagon Beans
Meier's Homemade Potato
Salad

Glazed Orange Rolls

Brownie Sundae

*Brownie, vanilla ice cream, covered
with deep rich chocolate sauce*

Bar-B-Que Beef
Shredded bar-b-que beef on a bun

Dutch Oven Bar-B-Que
Chicken/Ribs
Potatoes Au Gratin
Peach Cobbler
Cooked in Dutch Ovens

Top Sirloin
10 oz. USDA Choice
Top Sirloin Steak
Baked Idaho Potato
Grilled on site

Hamburger/Hot Dog
Meier's own quarter pound
Hamburger w/all condiments
Jumbo all Beef Franks
Grilled on site

Tri Tip Roast/Marinated
Grilled Chicken Breast
Grilled on site

Pork Back Ribs
Smoked with Applewood
Marinated Grilled Chicken Breast
Hamburger/Grilled Chicken
Meier's own quarter pound
Hamburger w/all the condiments
Marinated Chicken Breasts
Grilled on site

Chuckwagon-K-Bobs
Beef & Chicken-K-Bobs
w/fresh vegetables
Grilled on site

Boneless Ribeye Steak
10 oz. USDA Choice Boneless
Boneless Ribeye Steak
Baked Idaho Potato
Grilled on site



Complete Catering
Service for 40-10,000
Western Chuckwagon Bar-B-Ques
Company Picnics • Family Reunions
Business Luncheons
Open Houses • Dutch Oven Cookouts
801-278-4653 or 1-800-431-4655
www.meierscatering.com

**WE DO
PIG ROASTS!**



Call for complete menus and pricing: 278-4653

Top Travel Agencies in Utah

Ranked by Total Sales in 2011

Agency Name Address	Phone Fax Web	Total Sales in 2011	% Business Travel # of Utah Offices		Specialties	President/CEO
			% Vacation/ Leisure Travel	# of Utah Employees		
Christopherson Business Travel 558 S Green St, Ste 300 Salt Lake City	801-327-7700 801-327-7707 cbtravel.com	\$287 million	85% 15%	1 142	Business travel management and exclusive travel technology	Mike Cameron
Hess Corporate Travel 150 N Main St Bountiful	801-292-8687 801-292-8694 hesstravel.com	\$117 million	95% 5%	1 40	Business travel management	Alan H. Hess
Morris Murdock Travel 515 S 700 E, Ste 1B Salt Lake City	801-483-6441 801-483-6546 morrismurdock.com	\$50 million	0% 100%	6 90	Cruises, tours, guided vacations, and incentive travel	Brian Hollien
Columbus Travel 563 W 500 S Bountiful	801-295-9568 801-295-9688 columbusvacations.com	\$22 million	30% 70%	1 20	Vacation/Leisure Hawaii, Mexico, cruises, business incentive groups	Mark Faldmo
Snelgrove Travel Centers, Inc. 145 W Gentile St Layton	801-544-1800 801-546-9480 snelgrovetravel.com	\$17.9 million	5% 95%	1 16	Vacations and Cruises. "We beat internet prices"	Richard Snelgrove
Cruise & Travel Masters 4376 S 700 E Salt Lake City	801-268-4470 DND cruiseandtravelmasters.com	\$17.7 million	45% 55%	1 45	Authentic and cultural travel experiences, corporate and group travel management	Toby Nash
Clawson Travel Service 216 S 1300 E Salt Lake City	801-582-0303 DND DND	\$16 million	90% 10%	4 10	International travel, Utah's oldest travel agency, founded in 1933, still family owned	Brad Clawson
Thomas Travel 535 E 4500 S, Ste D200 Salt Lake City	801-266-2775 801-293-0991 thomastravel.com	\$10 million	20% 80%	4 8	Group corporate and incentive travel, theater and arts, world wide vacations, cruises	Robert Guymon
Black Pearl Luxury Services 515 S 700 E Ste 1B Salt Lake City	801-483-6464 801-483-6570 blackpearlservices.com	\$4 million	0% 100%	1 4	Europe, France, Italy, Africa, cruises, individual and family groups, small executive group travel	Brian Hollien
Wycoff World Travel 3501 S Main St Salt Lake City	801-487-5991 801-487-5995 wycofftravel.com	\$4 million	50% 50%	1 4	Corporate travel management and custom vacations	David Anderson

DND= Did Not Disclose N/A= Not Available
Please note that some firms chose not to respond, or failed to respond in time to our inquiries.
All rights reserved. Copyright 2012 by Enterprise Newspaper Group

frame IT

"You Name It ~ We Frame It"

Awards and Framing Solutions for Businesses

Whether you know exactly what you are looking for or don't have any idea at all, turn to the experts at Frame-It for your picture framing needs.

- ◆ Digital Photo Printing and Enlargements
- ◆ Diplomas and Awards
- ◆ Newspaper and Magazines Articles
- ◆ Posters and Prints
- ◆ Free on-site consultations for businesses

"The Art on your walls says a lot about your company"

3149 South State Street
Salt Lake City, UT 84115
801-485-7225
frameitutah.com



There was this very unique photo of a rescue that one of our flight team members had enlarged, it was such a striking photo that we decided to frame it and hang it in our reception area.

Because of the size, we used an old frame that we didn't know what to do with - didn't even know if it would work - Patty said she would take care of it. Turned out to be one of those things that stops you in your tracks when you see it!

I've been fortunate to work with the great people at Frame-it for more than twenty years, not only is their products top rate but their creativity and imagination is truly remarkable - they know what I want before I do - you just can't beat that, thank you.

K.D Simpson,
LifeFlight, Utah

Quality hand crafted picture frames made one at a time



**Travel
Services**

Representative

UTAH'S BUSINESS TRAVEL SPECIALISTS

Morris Murdock Business Travel accounts now managed by Hess Travel

801.292.8687 | 800.882.8028 | www.hesstravel.com

150 North Main Street, Bountiful, Utah 84010



HESS
CORPORATE
TRAVEL

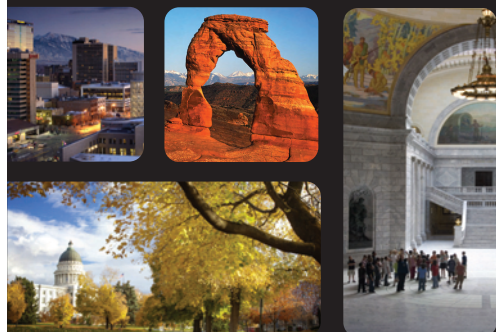
Top Commercial Property Management Firms in Utah

Ranked by Total Square Footage of Properties Managed in 2011

Company Name Address	Phone Fax Web	Total Square Footage of Properties Managed in 2011	# of Properties Managed in 2011	# of Property Managers	# of Full Time Employees	Examples of Properties Managed	Owner/Managing Principal
NAI West Property Management 376 E 400 S, Ste 120 Salt Lake City	801-578-5555 801-578-5500 naiwest.com	9.7 million	126	8	28	Family Center at East Downtown, Reef Parkway, Bangerter Crossing	Mike Falk
CBRE 222 S Main St, Fourth Floor Salt Lake City	801-869-8000 801-869-8080 cbre.com	8.1 million	48	9	34	257 Tower, Parkside Tower, 136 East Temple, South Towne Corporate Center, Legacy at Lake Park, Edgewater Corporate Park, Western Commerce Center, Crossroads Corporate Center, Landmark Commerce Center	Gary Coker
Cushman & Wakefield/Commerce 170 S Main St, Ste 1600 Salt Lake City	801-322-2000 801-322-2040 comre.com	5.3 million	56	9	20	DND	Michael Lawson William D'Evelyn
Coldwell Banker Commercial NRT 6550 S Millrock Dr Salt Lake City	801-947-8300 801-947-8301 coldwellutah.com	4.3 million	42	5	11	Fifth Third Bank, 185 South State, Lennox Industrial, OSHA Regional Headquarters, IRS Regional Facilities, Stevens Henager, Old Mill Village	Randal W. Owen
Cottonwood Management Services 2855 W Cottonwood Parkway. #560 Cottonwood Heights	801-365-6218 801-365-6201 cottonwoodpartners.com	2.2 million	18	4	10	Scowcroft Building in Ogden, Cottonwood at New Park in Park City, Foundry Square in San Francisco California, City of South Salt Lake Building, Empire Lakes in Rancho Cucamonga California	Reid Brinton
Asset Management Services 488 E Winchester St, #325 Murray	801-288-8811 801-281-1330 DND	979,064	26	2	4	Commerce Park, Weley Post Plaza, Union Plaza, Centerpoint Shopping Center, Plaza 9400	Gregory W. Strong
Capstone Property Management L.C. 4422 Century Dr Murray	801-313-0700 801-313-0800 capstonepm.com	650,000	19	1	3	DND	Lee Peterson

DND= Did Not Disclose N/A= Not Available
Please note that some firms chose not to respond, or failed to respond in time to our inquiries.
All rights reserved. Copyright 2012 by Enterprise Newspaper Group

Don't be left out



BOOK of LISTS 2013

Have your business
included in next
year's Book of List.

For more information contact
Ann Johnson
801-533-0556 ex. 207
ann@slenterprise.com

Top Commercial Real Estate Firms in Utah

Ranked by Combined Sales and Leasing Volumes in 2011

Company Name Address	Phone Fax Web	Total Commercial Sales Volume in 2011	Total Commercial Leasing Volume in 2011	# of Utah Offices # of Commercial Agents	# of Commercial Transactions completed in 2011	Specialties	Owner/Managing Principal
NAI West Commercial Real Estate 376 E 400 S, Ste 120 Salt Lake City	801-570-5555 801-578-5500 naiwest.com	\$610 million	\$323 million	5 91	1,772	Office, retail, land, investment, multi-family, property management, facility services, M&A, corporate services	Michael B. Falk
CBRE, Inc. 222 S Main St Salt Lake City	801-869-8000 801-869-8080 cbre.com	\$451 million	\$306 million	2 35	626	DND	Mark Bouchard
Coldwell Banker Commercial NRT 6550 S Millrock Dr, Ste 200 Salt Lake City	801-947-8300 801-947-8301 coldwellutah.com	\$193 million	\$463 million	2 81	1,031	Full service brokerage (office, retail, industrial, investment, land); Asset advisory, corporate real estate services, business brokerage, property/facility management, construction management	Steven Bogden Randall W. Owen
Mountain West Retail/Investment 376 E 400 S, Ste 120 Salt Lake City	801-578-5555 801-578-5500 mtnwest.com	\$53.1 million	\$155 million	3 17	282	Full service retail and investment brokerage, retail land lord tenant representation, advisory services	Chad Moore
Knight Realty Co. 254 S 600 E, #100 Salt Lake City	801-363-4949 DND DND	\$13.2 million	\$5.8 million	1 1	58	Commercial Sales, leasing and investment services, property management	Spencer Knight
Capsone Property Management L.C. 4422 Century Dr Murray	801-313-0700 801-313-0800 capstonepm.com	DND	\$1.8 million	1 1	30	"Full Service" management and leasing for third party owners; office, medical, detail, and flex space	Lee Peterson
Chapman-Richards & Associates 1414 E Murray-Holaday Rd Salt Lake City	801-278-4414 801-278-2724 chapmanrichards.com	DND	DND	1 8	DND	Commercial real estate sales and leasing	George Richards
Cushman & Wakefield/Commerce 170 S Main St, Ste 1600 Salt Lake City	801-322-2000 801-322-2040 comrs.com	DND	DND	5 92	1,042	Office, industrial, retail, land, investment, property management, asset services, lender asset services, valuation and advisory	Michael Lawson William D'Evelyn
InterNet Properties, Inc. 51 E 400 S, Ste 210 Salt Lake City	801-355-0600 801-363-6869 iproperties.com	DND	DND	1 17	DND	Brokerage, services market analysis, project management, construction management, real estate consulting	Vasilios Priskos

DND= Did Not Disclose N/A= Not Available
Please note that some firms chose not to respond, or failed to respond in time to our inquiries.
All rights reserved. Copyright 2012 by Enterprise Newspaper Group

WE MEAN BUSINESS

825 North 300 West, Suite C309 • Salt Lake City, Utah 84103
Phone: (801) 533-0556 • FAX: (801) 533-0684
www.slenterprise.com


UTAH'S BUSINESS JOURNAL

Law Firms in Utah

Listed Alphabetically

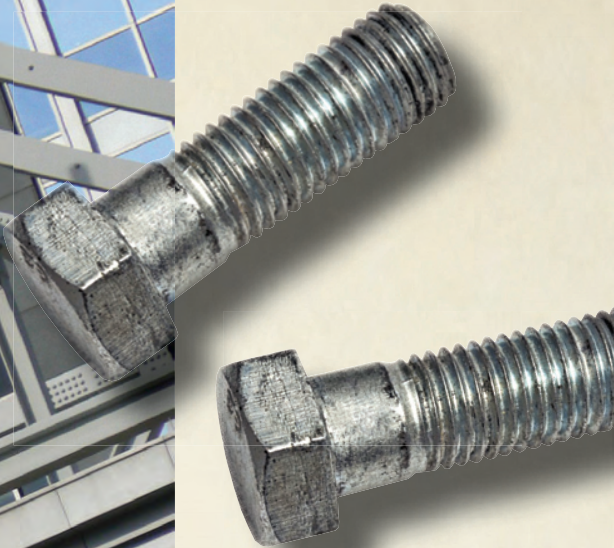
Page 1

Firm Name Address	Phone Fax Web	# of Utah Attorneys	# of Utah Paralegals	Total # of Attorneys Nationwide	Locations in Utah		Major Areas of Practice	Managing Partners
		# of Utah Partners	# of Full Time Utah Employees	Year Established	Locations Nationwide			
Ballard Spahr LLP 201 S Main St, Ste 800 Salt Lake City	801-531-3000 801-531-3001 ballardspahr.com	39	11	508	Salt Lake City		Business & Finance, Commercial Litigation, Communications, International, Labor & Employment, Life Sciences/Technology, M&A, Mortgage Banking, Patents, Public Finance, Real Estate, Resort & Hotel, Securities, Tax	Blake K. Wade
		18	68	1885	Atlanta, GA; Baltimore, MD; Bethesda, MD; Denver, CO; Las Vegas, NV; Los Angeles, CA; New Jersey, Philadelphia, PA; Phoenix, AZ; San Diego, CA; Washington D.C., Wilmington, DE			
Callister Nebeker & McCullough, P.C. 10 E South Temple, Ste 900 Salt Lake City	801-530-7300 801-364-9127 cnmlaw.com	51	11	51	Salt Lake City, Sugar House		Banking, corporate, Estate Planning, Tax, Litigation	T. Richard Davis
		32	41	1974	DND			
Christensen & Jensen 15 W South Temple, Ste 800 Salt Lake City	801-323-5000 801-355-3472 chrisjen.com	27	7	DND	Salt Lake City		Appeals, commercial Litigation, construction, Crisis Management, Employment & Labor, Fire, Government Defense, Insurance Bad Faith & coverage, Mediation & Arbitration, Personal Injury & Property Damage, Products Liability, Real Estate & Land Use, Recreational, Dram Shop, & Hospitality, Tort Defense, Transportation Law, Water Law	Scott T. Evans
		19	54	1949	DND			
Clyde Snow & Sessions 201 S Main Street, Ste 1300 Salt Lake City	801-322-2516 801-521-6280 clydesnow.com	29	4	29	Salt Lake City		White Collar Criminal Defense & Government Investigations, Family Law & Domestic Relations, Estate & Tax, Business & Transactions, Employment Law, Real Property & Eminent Domain, Natural Resources and Water Law, Intellectual Property & Trade Secrets Litigation, Securities, Professional Malpractice	Walter A. Romney, Jr.
		19	40	1951	DND			
Cohne, Rappaport & Segal, P.C. 257 E 200 S, Ste 700 Salt Lake City	801-532-2666 801-355-1813 crslaw.com	17	2	17	Salt Lake City		Civil Litigation, Real Estate, Business, Family Law, Bankruptcy, Wills & Estates, Contracts, Securities, Mergers & Acquisitions	Jeffrey L. Silvestrini
		14	10	1975	DND			
Dorsey & Whitney LLP 136 S Main St, Ste 1000 Salt Lake City	801-933-7360 801-933-7373 dorsey.com	24	4	561	Salt Lake City		Bankruptcy & Financial Restructuring, Corporate, Trial, Energy & Natural resources	Annette Jaruis, Marianne Short
		13	38	1912	Anchorage, AK; Wilmington, DE; Denver, CO; Des Moines, IA; Fargo, ND; Minneapolis, MN; Missoula, MT; New York, NY; Palo Alto, CA; Seattle, WA; Costa Mesa, CA; Washington D.C.			
Fabian Law 215 S State St Salt Lake City	801-531-8900 801-596-2814 fabianlaw.com	45	2	46	Salt Lake City		Bankruptcy, business & corporate, complex Litigation, Employment, Energy & Utilities, Environment Natural Resources, Real Property, Tax & Estate Planning	John E. S. Robson
		26	85	1919	Columbus, OH; Las Vegas, NV; Washington D.C.			
Holland & Hart LLP 222 S Main St, Ste 2200 Salt Lake City	801-799-5800 801-799-5700 hollandhart.com	76	10	450	Salt Lake City		Business & Finance, Bankruptcy, Emerging Growth & Venture Capital, Environmental & natural Resources, Employment & Immigration, Intellectual Property, Litigation, Real Estate & Construction, Tax	Greg Lindley
		41	138	1947	Aspen, CO; Billings, MT; Boise, ID; Boulder, CO; Carson City, NV; Cheyenne, WY; Colorado Springs, CO; Denver, CO; Denver Tech Center, CO; Jackson Hole, WY; Reno, NV; Santa Fe, NM; Washington D.C.			
Jones Waldo 170 s Main St, Ste 1500 Salt Lake City	801-521-3200 801-328-0527 joneswaldo.com	78	14	DND	Provo, Salt Lake City, St. George, Park City		Commercial Real Estate, Business Law Litigation	Keven Rowe
		56	DND	1875	Naperville, IL			
Kirton McConkie 50 E South Temple Salt Lake City	801-328-3600 801-321-4893 kmclaw.com	130	18	130	Salt Lake City		Real Estate, Intellectual Property, Litigation, Business, Employment, Healthcare, Tax and Estate Planning, Immigration, Construction	Lorin Barker
		83	234	1964	DND			

DND= Did Not Disclose N/A= Not Available
Please note that some firms chose not to respond, or failed to respond in time to our inquiries.
All rights reserved. Copyright 2012 by Enterprise Newspaper Group

THE STRUCTURE

FOR A SOLID BUSINESS



Is your company's legal structure sound? Have you formally established the rights and obligations of your company and its shareholders?

For more than 35 years, the Salt Lake City-based law firm of Cohne, Rappaport & Segal has worked alongside our clients toward the successful planning, formation, growth and exit strategy of businesses of all sizes.



**COHNE
RAPPAPORT
& SEGAL**

PROVIDING LEGAL SERVICES FOR TRANSACTIONS, LITIGATION AND FAMILY LAW.

257 East 200 South Suite 700 • Salt Lake City, Ut 84111
(v) 801-532-2666 (f) 801-355-1813 • www.crslaw.com

Law Firms in Utah

Listed Alphabetically

Page 2

Firm Name Address	Phone Fax Web	# of Utah Attorneys	# of Utah Paralegals	Total # of Attorneys Nationwide	Locations in Utah		Major Areas of Practice	Managing Partners
		# of Utah Partners	# of Full Time Utah Employees	Year Established	Locations Nationwide			
Parr Brown Gee & Loveless 185 S State St Salt Lake City	801-532-7840 801-532-7750 parrbrown.com	73 54	10 36	73 1975	Salt Lake City DND		Corporate Law, M&A, Securities Regulation & Public Offerings, Real Estate Development & Finance, Commercial Litigation, Employment Law, Natural Resources Law	Heidi E. C. Leithead
Parsons Behle & Latimer 201 S Main St, Ste 1800 Salt Lake City	801-532-1234 801-536-6111 parsonbehle.com	106 75	9 185	133 1882	Salt Lake City Boise, ID; Reno, NV; Las Vegas, NV; Spokane, WA		Antitrust & competition, Banking & Finance, Corporate Restructuring & Chapter 11 Bankruptcy, Corporate Transactions, Securities & Tax, Divorce & Family, Employment & Labor, Energy & Utilities, Environmental & Natural Resources, Government Relations & Lobbying, Health Care, Intellectual Property Law & Litigation, Litigation, Trials & Appeals, Mining, Real Estate, Trusts & Estate Planning	Raymond J. Etcheverry
Price Yeates & Geldzahler 15 W South Temple, St 1700 Salt Lake City	801-524-1000 801-524-1098 princeyeates.com	36 25	3 51	36 1971	Salt Lake City DND		Alcoholic Beverage Licensing & Compliance, Bankruptcy, Commercial Business, Employment Labor, Estate Probate Trust Administration, Family Law, Financial Institutions, Government Relations, International Law, Litigation, Natural Resources, Personal Injury, Real Estate, Tax, Trademark & Unfair Business Practices	John S. Chindlund
Snell & Wilmer 15 W South Temple, Ste 200 Salt Lake City	801-257-1900 801-257-1800 swlaw.com	47 25	4 50	415 1938	Salt Lake City Phoenix, AZ; Tucson, AZ; Los Angeles, CA; Orange County, CA; Denver, CO; Las Vegas, NV; Reno, NV		Commercial Litigation, Products Liability, Commercial Finance, Real Estate, Corporate Finance, Mergers & Acquisitions, Bankruptcy, Environment, Oil, Gas and Mining, Intellectual Property, Employment	Brian Hulse
Snow Christensen & Martineau 10 Exchange Place Salt Lake City	801-521-9000 801-363-0400 scmlaw.com	52 43	17 53	DND 1886	Salt Lake City, St George DND		Business Organizations, Commercial Litigation, Insurance Defense, Bankruptcy, Trucking & Transportation, Appeals	Andrew Morse
Stoel Rives LLP 201 S Main St Salt Lake City	801-328-3131 801-578-6999 stoel.com	73 43	7 133	390 1907	Salt Lake City Anchorage, AK; Boise, ID; Lake Tahoe, CA; Minneapolis, MN; Portland, OR; Sacramento, CA; San Diego, CA; San Francisco, CA; Seattle, WA; Vancouver, WA		Corporate, Litigation, Energy, Labor & Employment, Intellectual Property, Real Estate, Estate Planning	Richard H. Johnson II
Strong & Hanni Law Firm 3 Triad Center, Ste 500 Salt Lake City	801-532-7080 801-596-1503 strongandhanni.com	52 34	15 104	52 1888	Salt Lake City, Sandy DND		Business, Insurance Defense, commercial Litigation, Employment, Family, Medical Malpractice Defense, Real Estate	Catherine M. Larson
Thorpe North & Western, LLP 8180 S 700 E, Ste 350 Sandy	801-566-6633 801-566-0750 tnw.com	21 8	2 14	21 1979	Sandy DND		Intellectual Property, Patents, Trademarks, copyrights, trade Secrets	Garron M. Hobson & Peter M. de Jonge
Van Cott Bagley Cornwall & McCarthy, P.C. 36 S State St, Ste 1900 Salt Lake City	801-532-3333 801-534-0058 vancott.com	57 28	5 107	57 1874	Salt Lake City, Ogden, Park City Las Vegas, NV		Banking & Financial Service, Construction, Corporate, M&A, Business Transactions, Eminent Domain, Employment & Employee Benefits, Energy, Government Relations, Insolvency & Creditor Rights, Intellectual Property, Natural Resources & Environmental Law, Litigation, Real Estate, Wealth Management	Stephen D. Swindle
Workman Nydegger 60 E South Temple, Ste 1000 Salt Lake City	801-533-9800 801-328-1707 wnlaw.com	53 35	7 DND	55 1984	Salt Lake City Irvine, CA		Intellectual Property (IP) Prosecution, IP & Complex Litigation, Mediation, Licensing, IP Counseling	Brent P. Lorimer

DND= Did Not Disclose N/A= Not Available
Please note that some firms chose not to respond, or failed to respond in time to our inquiries.
All rights reserved. Copyright 2012 by Enterprise Newspaper Group



STRONG & HANNI LAW FIRM

KEEPING YOUR BUSINESS LEGAL



- Business & Real Estate Transactions
- Labor & Employment Law
- Securities Law
- Taxation
- Corporate & Commercial Litigation
- Business Formation & Acquisition
- Construction Law
- Estates & Trusts

POWERFUL

RESPONSIBLE

KNOWLEDGEABLE

www.strongandhanni.com • 3 Triad Center, Suite 500 • Salt Lake City, Utah 84180 • 801.532.7080


Top Office Furniture Dealers in Utah

Ranked by Total Revenue 2012 Year to Date

Company Name Address	Phone Fax Web	Total Revenue 2012 Year to Date	# of Full Time Utah Employees	Notable Projects	Products and Services Offered	Head of Local Operations
Midwest Commercial Interiors 987 S. West Temple Salt Lake City	801-359-7681 801-355-2713 mwciutah.com	\$39.5 million	61	U of U South Jordan Medical Center, Utah State University College of Agriculture, Ancestry.com Corporate Office, Huntsman Cancer Center Phase II	Commercial furniture, space planning, interior design, move management, floor coverings, modular walls, architectural products, acoustical products. 3D interior space modeling, renderings	Marshall Tate
		14,000	13			
CCG Howells 358 S. Rio Grande Salt Lake City	801-359-6622 801-359-6636 ccghowells.com	\$16 million	65	Boart Longyear, Davis County, AlphaGraphics, Natural History Museum, U of U David Eccles School of Business, Provo Marriott, Hogle Zoo	Commercial, residential and resort furniture, design services, installation, warehousing	Carmelle Jensen & Jerry Howells Jr.
OP Dealer 2612 S. 1030 W. Salt Lake City	801-973-8388 801-973-4220 opdealer.com	\$9 million	20	DND	Furniture sales, space planning, design and relocation	Andy Baldwin
		3,500	10			
Bluefin Office Group 780 N. 1200 W. Orem	801-431-0056 DND bluefinoffice.com	\$7.5	29	Clyde Companies, Challenger Schools, SEO.com, Imagine Learning, SME Steel, US Magnesium	Space planning, office furniture, installation, corporate moving, office supplies	Dale Bensen
		3,000	29			
Linda's Furniture 3330 S. Highland Dr. Salt Lake City	801-487-3992 801-487-1422 lindasfurniture.com	\$1.5 million	10	Automobile dealerships, attorney's offices	Desks, credenzas, files, bookcases, office chairs (leather & fabric), lawyers bookcases, waiting room chairs	Robert Slater
		31,000	5			
Office Furniture Blowout 160 W. 2100 S. Salt Lake City	801-486-3500 801-606-2801 officefurnitureblowout.com	\$1.5 million	7	Varilease, KUTV, Sorenson, Novarad, Kennecott, City Creek, JetBlue, Terra Tek, University of Nevada	New and used office furniture, moving/relocating services, design work	Mark Legones
		35,000	3			
Office Systems Specialists 3408 S. 1400 W. Salt Lake City	801-908-5286 DND DND	\$1.5 million	4	Hill Air Force Base, WJ Bradley, Response Marketing, Harmon Music, Sum Products, Apria Health Care	Remanufactured and new cubicle, new case goods, new Clone Herman Miller Cubical, Quality pre-owned cubicles. Complete Remanufacturing Facility	Ronald De Klerk
		2,000	30-40			
Office Furniture Brokers 1475 W. 9000 S. West Jordan	801-809-4188 DND officefurniturebrokers.com	\$989,000	4	Health Equity, Trifecta Marketing, Listen Tech., BYU Hawaii	Used and new office furniture, cubicle, desks, chairs, conference room tables. Everything sold at broker pricing, below wholesale	Robert De Klerk
		20,000	1			
Sugar House Furniture 2198 S. Highland Dr. Salt Lake City	801-485-3606 801-485-8361 sugarhousefurniture.com	\$800,000	3	Multiple county libraries, Unita County Courthouse, Green River Wyoming Judges Office	Mission, Arts & Crafts, and Craftsman style desks, office chairs, files, bookcases and hutches	Jill Haskull
		3,500	3			
Business Resources, Inc. 1415 S. 700 W. #9 Salt Lake City	801-908-6200 801-908-6202 brifurniture.com	DND	4	Tetra, Novell, IBM, G.E. Capital, Morgan Stanley	Used Herman Miller, Steelcase, Haworth, Knoll, cubicles, desks, chairs, files, conference tables, training room tables. In business for 28 years	Hal Brown
		15,000	2			

DND= Did Not Disclose N/A= Not Available
Please note that some firms chose not to respond, or failed to respond in time to our inquiries.
All rights reserved. Copyright 2012 by Enterprise Newspaper Group

Don't be left out



BOOK of LISTS 2013

Have your business included in next year's Book of List.

For more information contact
Ann Johnson
801-533-0556 ex. 207
ann@senterprise.com



Office Furniture Brokers



Receive **30%**
off your purchase of new
or used office furniture.

As a new and used office furniture broker, our prices are lower than anyone in town. With the largest showroom in all of Salt Lake County, our 18,000 square feet of space is full of cubicles, conference tables, chairs, desks, file units, white boards, etc. We are here to meet any of your office furniture needs. We will NOT be undersold because of price.



Contact: Rob De Klerk 801.809.4168

**Visit our showroom: 1475 W 9000 S West Jordan
(Inside the Granite Furniture Store)**

www.officefurniturebrokers.com

rob.ofb@hotmail.com

Top Temporary Staffing Firms in Utah

Ranked by Number of Temps Assigned Per Week in Utah

Company Name Address	Phone Fax Web	# of Temps Assigned per Week in Utah	# of Full Time Utah Employees	# of Utah Offices	Industries Served	Benefits Available
SOS Employment Group 2650 S. Decker Lake Blvd, Ste. 500 Salt Lake City	801-484-4400 801-486-3131 sosomeploymentgroup.com	3191	2542	23	Accounting, finance, administrative, customer service, manufacturing, production, oil & gas, construction, renewal energy and more	Medical, dental, vision, Rx, life insurance, short-term disability, 401k, opportunity to earn paid time off and referral bonuses
Strategic Staffing A division of BBSI 3761 S. 700 E Salt Lake City	801-994-9494 801-994-9499 strategicstaffs.com	2710	35	5	Manufacturing, administrative, call centers, production, warehouse, hospitality, accounting, technical, engineering, and professional direct hire	Vacation and holiday pay, health, dental, vision, 401k, direct deposit
Kelly Services 181 E. 5600 S., Ste 140 Murray	801-262-2252 801-262-3876 kelleyservices.com	2200	35	10	IT, engineering, science, healthcare, finance, law, production, assembly, clerical, call center and education	Yes
Express Employment Professional 521 E. 100 S. #100 Salt Lake City	801-521-4210 801-521-4355 expresspros.com	1500	28	7	All	Medical, dental, 401k, life
ResourceMFG 3981 S. 700 E. Ste. #9 Salt Lake City	801-265-1999 801-665-2005 resourcemfg.com	1400	14	6	Manufacturing, military, medical, aerospace, industrial, food	Medical insurance, dental insurance, short term disability, life
Synergy Staffing Partners 5578 S. Redwood Rd. S-B Taylorsville	801-266-9675 801-665-1853 synergystaffing4u.com	1350	12	1	Administrative/clerical, light industrial, manufacturing, warehouse and professional direct hire	Holiday, vacation pay, discount medical
Spherion Staffing & Recruiting 17 E. Winchester St. Salt Lake City	801-261-8880 801-261-8965 spherion.com/utah	800	14	5	All Industries	Full benefits are available
Prologistix 3981 S. 700 E. Ste. #7 Salt Lake City	801-265-2369 DND prologistix.com	415	9	4	Logistics, 3PL, Warehouse	Medical insurance, dental insurance, short term disability, life
Apex Staffing, LLC 145 E. 1300 S. #103 Salt Lake City	801-596-8119 801-596-8108 apexjobs.net	220	5	1	Construction, manufacturing, warehousing, production, call center	DND
Utah Employment Services 2292 S. Redwood Rd West Valley City	801-978-0378 801-978-0374 utahemploy.com	220	6	1	Manufacturing, production, construction, electrical, engineers	Vacation, holiday, medical insurance, direct deposit, sick leave
Todays Office Professionals 307 W. 200 S. Ste. 3002 Salt Lake City	801-519-5093 801-519-5091 todays.com	200	3	1	All Industries, office, accounting, sales, warehouse, IT	Full benefits are available
Prince, Perelson & Associates 2180 S. 1300 E. #350 Salt Lake City	801-532-1000 801-532-7676 perelson.com	150	22	1	Accounting & finance, administrative, legal, sales & marketing, information technology, engineering-permanent & temporary services	Health, dental & vision insurance, 401k
Kforce Inc. 1245 Brickyard Rd. #100 Salt Lake City	801-257-6800 801-257-6838 kforce.com	50-60	13	1	Technology skill sets within any industry	Health, dental, vision, short & long term disability, 401k, stock purchase plan, PTO
Andersen Certified Staffing, LLC 3098 S. Highland Dr. #260 Salt Lake City	801-463-7400 DND andersenstaffing.com	9	2	1	Manufacturing, service, financial, etc. Specialists in accounting staffing	Bonus

DND= Did Not Disclose N/A= Not Available
Please note that some firms chose not to respond, or failed to respond in time to our inquiries.
All rights reserved. Copyright 2012 by Enterprise Newspaper Group



Placing Extraordinary Talent is Our Specialty!

From entry level to senior positions,
Spherion jumps through hoops to
get top companies the right people.

The right way. Right away!

Salt Lake – (801) 261-8880

Orem – (801) 221-0550

Ogden – (801)825-1100

www.Spherion.com/Utah



Spherion Utah



@SpherionUtah

spherion®

recruiting and staffing excellence™

Delivering the right talent, every time

Today's Office ProfessionalsSM, is a recognized staffing leader offering highly specialized, flexible, temp-to-hire and direct-hire staffing support to businesses looking to maximize performance through exceptional hires. Through a network of over 50 offices, we fill a broad range of positions from administrative to professional services.

Call us today!

Ashley Kelly

Tel: 801-519-5093

www.todays.com



THEIR

FINANCING COMES WITH STRINGS.

OURS

COMES WITH SCISSORS.

Getting financing for your business from a traditional bank can be a hassle. But TAB is no traditional bank — we're a leading provider of alternative financing, that just happens to be a bank. We can not only provide funds at a lower cost than financing companies, we can do it with fewer financial covenants and less hassle than traditional banks. It's the best of both worlds. If you're looking for a reliable source of capital for your business, but don't want to deal with the red tape of a traditional bank, TAB is the answer.

Visit tabbank.com/nostrings to see if you qualify for funding and get a free consultation.



A DIFFERENT WAY TO BANK REQUIRES A DIFFERENT BANK.